

Wild Juvenile Salmonid Monitoring Program 2021 Clayoquot Sound, BC

Report Date: June 14, 2021

Prepared For:
Cermaq Canada
203-919 Island Highway
Campbell River, BC
V9W 2C2



1310 Marwalk Cres
Campbell River, BC.
V9W 5X1
phone: (250) 287-2462
fax: (250) 287-2452
email: info@mainstreambio.ca
www.mainstreambio.ca



Summary

Beach seine sampling was conducted on behalf of Cermaq Canada, with permission from Maaqutusiis Hahoulthee Stewardship Society (MHSS) to conduct operations in Ahousaht Territory, in Clayoquot Sound, BC in 2021. Sampling was completed to monitor sea lice abundance, prevalence and intensity on juvenile wild salmon within Clayoquot Sound in support of the Aquaculture Stewardship Council's Salmon Standard for Cermaq Canada finfish aquaculture sites in the area. This data report represents the seventh year of wild juvenile salmonid monitoring within Clayoquot Sound conducted solely by Cermaq Canada.

Sampling was conducted during five separate sampling events in March, April and May 2021, selected to coincide with the peak outmigration period of juvenile salmonids. Sampling was completed at 18 sites within Clayoquot Sound, BC in 2021. The sites were selected based on their locations relative to existing aquaculture sites located in the area. Sampling was completed with the support of the Ahousaht Nation.

Total catch numbers of each salmonid species were recorded. Fifteen individuals or the total number of captured samples (if less than 15 were captured) were collected at each of the 18 sites during the sampling events. Water quality measurements including temperature and salinity were recorded at each site during each sampling event.

Collected fish were frozen and analyzed in the lab for the presence of sea lice by Mainstream Biological Consulting. Sea lice observed on the individual fish specimens during laboratory analysis were initially identified as copepodids, non-motile chalimus, or motile pre-adults and adults. Copepodids were identified to species and non-motile sea lice were identified as either of the two chalimus stages for *Lepeophtheirus spp.* or four chalimus stages for *Caligus clemensi*. Motile lice, either pre-adults or adults, were identified as either *Lepeophtheirus spp.* or *Caligus clemensi* and the sex of the louse was determined. Motile *Lepeophtheirus spp.* sea lice found on salmonid specimens were not identified to species, but have been assumed to be *L. salmonis* due to the lack of documented infestation of Pacific salmon by other *Lepeophtheirus* lice species (Jones and Nemec, 2004).

This data summary report documents the observed sea lice infestation rate on retained wild juvenile salmon collected in Clayoquot Sound in 2021. A total of 886 juvenile salmonids underwent analysis for sea lice infestation including 854 chum salmon (*Oncorhynchus keta*) and 32 coho salmon (*Oncorhynchus kisutch*). Two threespine stickleback (*Gasterosteus aculeatus*) were collected and underwent analysis for sea lice infestation. No pink salmon, or Atlantic salmon were captured during sampling completed in Clayoquot Sound in 2021. The chinook salmon and sockeye salmon captured were not retained for sea lice analysis.

From the total sample population 248 fish were infested with 528 sea lice. The calculated prevalence for the total sample population was 27.9 % and the sea lice abundance was 0.59 for the sample population collected in Clayoquot Sound in 2021.

Chum salmon smolts were captured in significantly greater numbers than any other species. A total of 6890 chum salmon were captured, representing 98.7 % of all captured samples. Of the 6890 chum captured, 854 were kept for lab analysis for sea lice infestation. A total of 240 chum smolts were found to be infested with 507 lice resulting in a calculated prevalence of 28.1 %, abundance of 0.59 and an average intensity of 2.1 for the chum salmon sample population.

A total of 32 coho salmon were collected in Clayoquot Sound in 2021. Eight coho salmon were found to be infested with 21 lice resulting in a species prevalence of 25.0 %, an abundance of 0.66 and an average intensity of 2.6.

Two threespine stickleback were collected in Clayoquot Sound in 2021. No sea lice were identified during lab analysis.

A total of 496 *Lepeophtheirus salmonis* sea lice of various life stages were identified on 230 individuals and 32 *Caligus clemensi* sea lice were found on 24 of the 888 samples analyzed in the lab. There were 6 samples that were infested with both *L. salmonis* and *C. clemensi*.

For the chum salmon sample population, a total of 477 *Lepeophtheirus salmonis* sea lice of various life stages were identified on 223 juvenile chum salmon and 30 *Caligus clemensi* sea lice were found on 23 of the juvenile chum salmon analyzed in the lab. There were 6 chum salmon infested with lice from both species.

For the coho salmon sample population, 19 *Lepeophtheirus salmonis* sea lice were identified on 7 juvenile coho salmon and two *Caligus clemensi* sea lice were found on one juvenile coho salmon during lab analysis.

A comparison of the prevalence and abundance of sea lice found on chum salmon was completed for sample data from 2016 to 2021 collected in Clayoquot Sound, BC. This data is presented in a summary table in Appendix IV.

Table of Contents

Summary.....	ii
Table of Contents.....	iv
List of Figures	v
List of Tables.....	vi
1.0 Introduction.....	1
2.0 Methods.....	3
2.1 Site Locations	3
2.2 Field Procedures.....	5
2.3 Laboratory Procedures	6
2.4 Data Analysis.....	7
3.0 Results	9
3.1 Water Quality Parameters.....	9
3.2 Fish Sample Composition	11
3.3 Fish Sample Size Statistics.....	13
3.3.1 <i>Chum salmon</i>	13
3.3.2 <i>Coho salmon</i>	13
3.4 Sea Lice Infestation	14
3.4.1 <i>Infestation Rates of Chum Salmon</i>	14
3.4.2 <i>Infestation Rates of Coho Salmon</i>	19
3.5 Infestation Rates by Sea Lice Species.....	20
3.5.1 <i>Infestation Rates by Sea Lice Species on Chum Salmon</i>	20
3.5.2 <i>Infestation Rates by Sea Lice Species on Coho Salmon</i>	22
4.0 Conclusions	23
5.0 References	24
Appendix I – Field Data.....	I
Appendix II – Capture and Collection Sample Totals	III
Appendix III – Sea Lice Analysis Data	VI
Appendix IV – Historical Comparison (2016-2021).....	XXVII

List of Figures

Figure 1:	An overview map showing the location of Clayoquot Sound on the west coast of Vancouver Island, BC.....	2
Figure 2:	The locations of the 18 beach seine sites in Clayoquot Sound sampled in 2021.....	4
Figure 3:	Surface water temperature recorded at 18 beach seine sites in Clayoquot Sound, BC between March 24, 2021 and May 20, 2021.....	10
Figure 4:	Salinity measurements recorded at 18 beach seine sites in Clayoquot Sound, BC between March 24, 2021 and May 20, 2021.....	10
Figure 5:	The number of sea lice per chum salmon graphed as a percentage of the total chum sample population collected in Clayoquot Sound in 2021.....	18

List of Tables

Table 1:	The site name and location of the 18 beach seine sites in Clayoquot Sound.	3
Table 2:	The total of collected individuals of each fish species captured in Clayoquot Sound, BC in March, April and May 2021, and the percentage of the total capture population that they represent.	11
Table 3:	The number of captured fish (Capture Total) and the number of individual fish collected (Sample Total) from each of the 18 sample sites in Clayoquot Sound, BC in March, April and May 2021.	12
Table 4:	Results of analysis for sea lice infestation on the sample population collected by beach seine in Clayoquot Sound, BC in 2021.	14
Table 5:	The number of sea lice found on chum salmon collected in Clayoquot Sound in 2021 summarized by the 18 sites where beach seining was conducted. .	16
Table 6:	Calculated sea lice prevalence, abundance and intensity by site as determined for chum salmon collected in Clayoquot Sound, BC in 2021.	17
Table 7:	Calculated sea lice prevalence, abundance and intensity by sampling area as determined for chum salmon collected in Clayoquot Sound, BC in 2021.	17
Table 8:	The number of sea lice in each life stage by species identified on chum salmon from Clayoquot Sound 2021. LEP = <i>Lepeophtheirus salmonis</i> CAL = <i>Caligus clemensi</i>	20
Table 9:	The number of sea lice in each life stage by species identified on chum salmon grouped by collection area in Clayoquot Sound in 2021. LEP = <i>Lepeophtheirus salmonis</i> CAL = <i>Caligus clemensi</i>	21

1.0 Introduction

At the request of Cermaq Canada, beach seine sampling to capture wild juvenile salmon to be analyzed for sea lice infestation took place at 18 sites located in Clayoquot Sound, BC (Figure 1). The sample collection occurred during five sample events in 2021 on March 24/25, April 7/8, April 21/22, May 5/6 and May 19/20. These weeks were selected to coincide with the estimated peak outmigration dates of juvenile salmonids. Sampling was completed with the support of the Ahousaht Nation.

Parasitic copepods from the family Caligidae (sea lice) found in the coastal waters of British Columbia are divided into two genera: *Lepeophtheirus* and *Caligus*. Eleven species of *Lepeophtheirus* have been identified infesting fish in the Pacific Ocean, while only one species of *Caligus* (*Caligus clemensi*) have been identified (Margolis and Arthur 1979; McDonald and Margolis, 1995). Motile *Lepeophtheirus spp.* sea lice found on salmonid specimens were assumed to be *L. salmonis* due to the lack of documented infestation of Pacific salmon by other *Lepeophtheirus* lice species (Jones and Nemec, 2004).

These genera have similar life histories and developmental stages (Kabata, 1972; Johnson and Albright, 1991a). The sea lice hatch from eggs and develop through two free-swimming naupilii stages before developing into an infectious free-swimming copepodid. At this point, the sea lice attach to their host and develop through chalimus stages. The chalimus are “non-motile” and are attached to their host by a frontal filament. The final chalimus stage terminates as the sea lice become “motile” and are no longer attached to their hosts by the frontal filament. The sea lice can now move freely on the fish as they develop through a pre-adult stage before becoming reproductively viable adults.

Cermaq Canada originally requested monitoring of sea lice abundance, prevalence and intensity on wild juvenile salmon in Clayoquot Sound in support of Aquaculture Stewardship Council’s Salmon Standard, but the monitoring program has evolved to be a standard annual monitoring event in cooperation with Ahousaht Fisheries.

This data summary report documents the observed sea lice infestation rates on retained samples collected in Clayoquot Sound in 2021. This represents the seventh year of wild juvenile salmonid monitoring in Clayoquot Sound conducted solely by Cermaq Canada. This monitoring program has been adapted from previous sea lice monitoring completed by the Clayoquot Sound Sea Lice Working Group and represents a continuation of the sampling they conducted between 2003 and 2011.

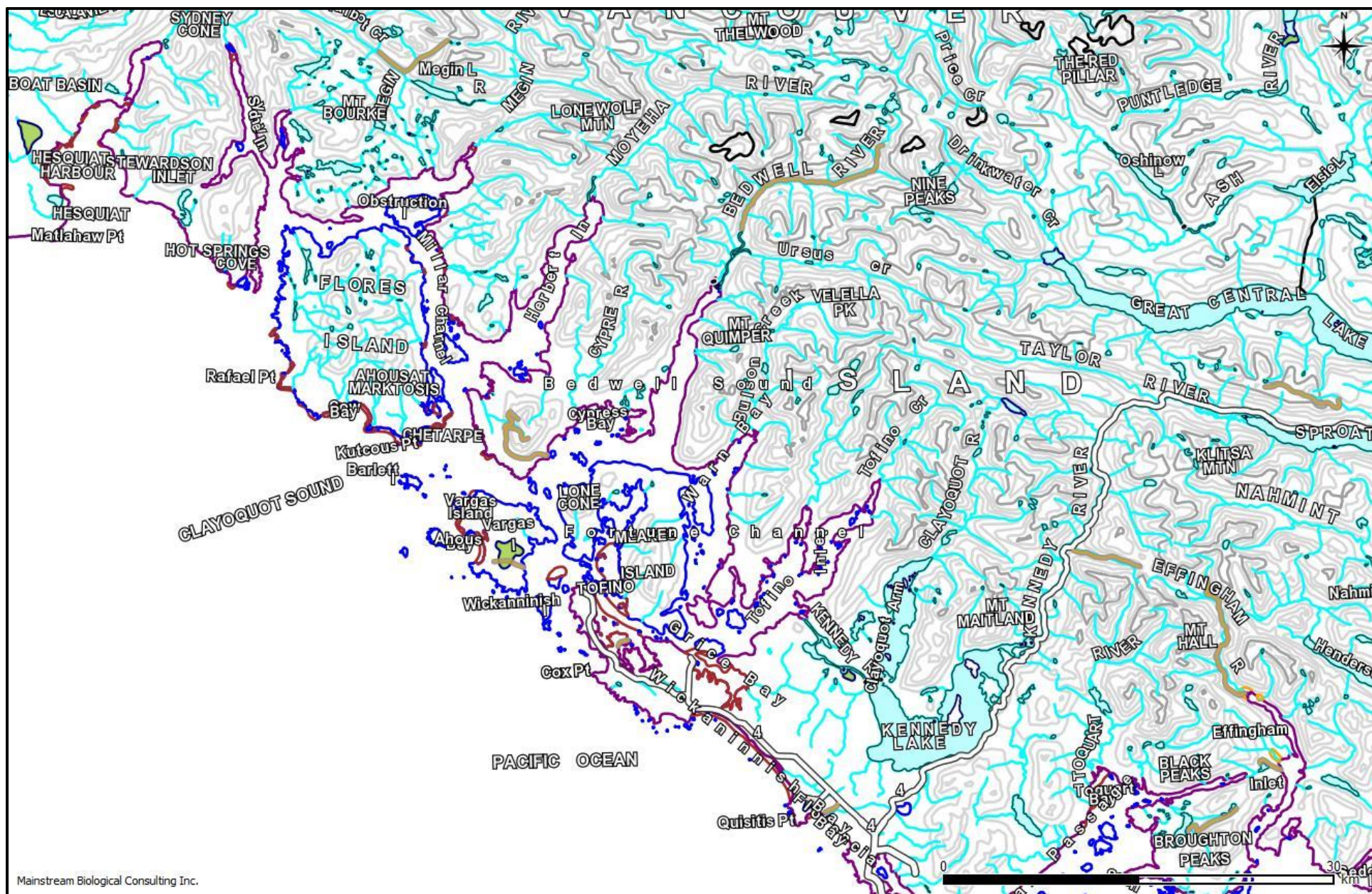


Figure 1: An overview map showing the location of Clayoquot Sound on the west coast of Vancouver Island, BC.

2.0 Methods

The fish inspected for sea lice infestation were collected from 18 sites in Clayoquot Sound, BC in 2021. These sites were chosen based on their locations relative to existing Cermaq Canada aquaculture sites in the area (Figure 2). The sites were sampled five times in 2021 on March 24/25, April 7/8, April 21/22, May 5/6 and May 19/20.

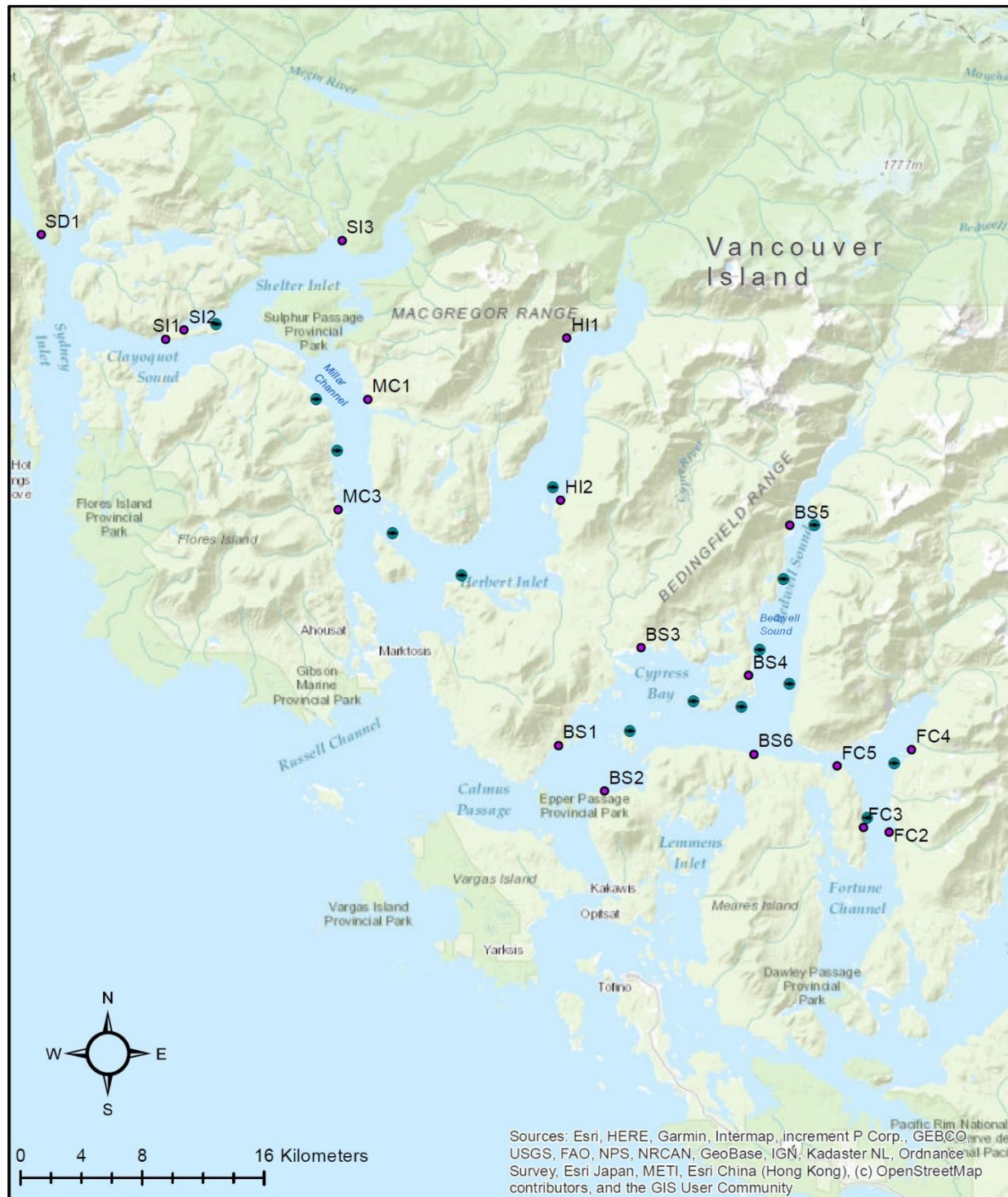
2.1 Site Locations

The 18 sites at which beach seining was conducted to collect specimens for sea lice analysis consisted of three sites in Shelter Inlet, two sites in Millar Channel, two sites in Herbert Inlet, six sites in Bedwell Sound, four sites in Fortune Channel and one in Sydney Inlet. The approximate locations of the 18 beach seine sites are shown in Figure 2. GPS coordinates collected in the field for the sites are presented in Table 1.

Table 1: The site name and location of the 18 beach seine sites in Clayoquot Sound.

Site Name	Latitude	Longitude
SI1	49 23.863	126 10.659
SI2	49 24.133	126 09.971
SI3	49 26.266	126 04.727
MC1	49 22.586	126 03.812
MC3	49 19.894	126 04.614
HI1	49 23.195	125 57.079
HI2	49 20.181	125 56.882
BS1	49 14.488	125 56.924
BS2	49 13.471	125 55.336
BS3	49 16.751	125 54.045
BS4	49 16.071	125 50.223
BS5	49 19.564	125 48.782
BS6	49 14.269	125 50.032
FC2	49 12.586	125 45.257
FC3	49 12.656	125 46.195
FC4	49 14.323	125 44.576
FC5	49 14.030	125 47.081
SD1	49 26.375	126 15.365

Clayoquot Sound Wild Smolt Monitoring Program



CERMAQ

- 2021 Beach Seine Locations
- Cermaq Finfish Facilities

Figure 2: The locations of the 18 beach seine sites in Clayoquot Sound sampled in 2021.

2.2 Field Procedures

In house procedures, adapted from procedures utilized by the Department of Fisheries and Oceans (DFO) for beach seining, fish collection and field data recording in place since 2004 for juvenile salmon sampling were used by Mainstream Biological Consulting staff during sampling in Clayoquot Sound in 2021.

Boats and drivers were supplied by Ahousaht Nations for beach sampling in Clayoquot Sound in 2021. A 150 ft (45.7 m) long by 12 ft (3.7 m) deep beach seine net was used to capture specimens. The net was constructed in three 50 ft (15.2 m) sections. The centre bunt section consisted of one-quarter inch diameter diamond mesh, while the two side panels (wings) were half-inch diameter diamond mesh. Floats were located every 30 cm along the top-line and a lead line weighted the bottom of the net.

A four-person crew was utilized to conduct the beach seine sets and retrieve samples in a consistent manner at each of the 18 selected sites. All beaches were approached slowly by boat and one crewmember was put ashore with the towline from one end of the beach seine net. The onshore crewmember held the towline at one side of the sample site, while the second and third crewmembers ensured the net deployed smoothly off the bow or side of the boat. The fourth crewmember, the boat operator, backed the boat in a wide semicircle towards the opposite side of the sample site and remained on the boat. When the net was fully deployed, the second and third crewmembers stepped into the shallow water with the towline or tossed it to the awaiting crewmember on shore. A slow retrieval of the net began immediately.

As the net was slowly retrieved, a sample of surface water was collected to measure salinity and water temperature data using an Oakton® SALT 6+ meter.

The crewmembers retrieved the net evenly from opposite ends ensuring that the lead line remained as close to the bottom as possible. All retrieved netting was piled on the beach above the water level. As the retrieval reached the net bunt, the lead line was retrieved at a faster rate than the floats to allow the netting of the bunt to form a bag under the captured fish. The lead line was then pulled up onto the beach above the water level. One crewmember worked their way around the outside of the net in the shallow water to ensure the floats stayed above the surface of the water. In this manner a small, shallow bag formed from the bunt of the net held the captured fish in the water.

The net was manipulated, if necessary, in response to rising or falling tides in order to ensure the captured fish remained in the net and were held in sufficient water to minimize stress. The level of sufficient water was dependant on the size and numbers of captured fish but was generally thought of as enough water to minimize fish contact with the net or with other fish.

A total of 15 individuals from each target species captured or all of the individuals present (if less than 15) were collected as samples for sea lice infestation analysis. Individual fish were “swam” into an appropriately sized whirl-pak bag. All handling of fish was kept to a minimum. All captured chinook and sockeye salmon were released immediately.

When all the fish for retention were collected, a total catch number for each species was recorded. The fish remaining in the net were counted out of the seine net, or an estimate of the remaining fish was made (estimates were used when it appeared that more than 300 individuals from any given species remained in the net). The total of fish

remaining in the net was added to the number of retained individuals to calculate a total capture number for a given species.

A crewmember recorded all the information from each beach seine set in a standardized field form. The information recorded included the following:

- The site name;
- The date;
- The time at the end of the individual fish collection;
- Comments on weather and oceanic conditions;
- Total capture and retained fish numbers for each specimen group;
- Water temperature (°C) and salinity (ppt) to one decimal place;
- GPS coordinates; and
- The number of salmonid mortalities.

The retained fish from each site were packaged separately in re-sealable bags and labelled with the site name, the date and sample numbers and species. Site sample bags were placed in a cooler with sufficient ice packs for storage. The specimens were transferred to a portable freezer immediately upon return to the boat launch and then transferred to a freezer at the office upon return from the field.

The beach seine net was reloaded onto the bow of the boat. Crewmembers scanned the net for obvious holes, which were repaired immediately if found. Remaining sample gear was stored for transit between sites.

The above procedures for beach seine net deployment and retrieval, as well as those described for fish collection, were repeated at all 18 sample sites.

2.3 Laboratory Procedures

The laboratory procedures for sea lice analysis have been adapted from the procedures demonstrated by Sheila Dawe and Eliah Kim at the Pacific Biological Station in Nanaimo, BC, during sea lice identification training that was conducted on April 1, 2004. Additional sea lice identification training by Paul Callow was conducted at the Pacific Biological Station in September 2007.

Fish samples were thawed immediately prior to lab analysis. Individual fish were identified to species and counted. The results of this identification and count were compared to the reported data found on the field data sheets.

A standardized data sheet was used to record sea lice analysis results from each site. The site and week number, sample date and number of fish were recorded. The date and time of the start of the analysis was also noted on the data sheet. Data from individual fish was recorded as the analysis proceeded.

Individual fish, when thawed, were removed from their bag, using a pair of forceps at the caudal peduncle, and placed in a petri dish. Each bag was labelled chronologically with an individual identification number (1 –888). Each fish was then scanned for the presence of sea lice under a stereoscopic dissection microscope. The microscope was set at a magnification of 20X for the preliminary survey of each fish sample, but magnification was occasionally increased to 40X during individual sea lice identification.

Microscopic analysis of each individual fish began at the anterior end of the left side of the specimen. The head was examined first, after which a scan was made along the dorsal half of the specimen working towards the posterior end and the tail. The dorsal fin

was lifted and expanded, as was the caudal fin, with a pair of forceps. From the posterior end a return scan was made along the ventral half of the specimen back to the head. The anal fin, pelvic fin and pectoral fin were also lifted and expanded using a pair of forceps. The fish was then flipped using a pair of forceps at the caudal peduncle and the procedure was repeated on the right hand side of the specimen. Additional scans were made longitudinally down the fish if the entire depth of the fish could not be seen in a single pass. Any sea lice observed on the fish were removed and placed in a petri dish with saline solution.

Each individual bag was visually inspected after the removal of the fish for the presence of pre-adult or adult sea lice that may have become dislodged during handling. These “loose” sea lice were recorded on the data sheet with the data for the corresponding specimen and it was assumed that the lice had come from that individual.

Sea lice were identified using characteristics outlined by Kabata (1972) and Johnson and Albright (1991a). Sea lice observed on individual fish were identified as either non-motile chalimus (including copepodid), or motile pre-adults and adults. Non-motile sea lice were identified as either of the two chalimus stages for *Lepeophtheirus salmonis* (Hamre et al., 2013) or four chalimus stages for *Caligus clemensi*. Motile sea lice were identified as *Lepeophtheirus* spp. or *Caligus clemensi*, pre-adults or adults, and males or females.

Chalimus were identified to species primarily by characteristics of the frontal filament. However, size, shape, genital development, and leg development were used as secondary identifying characteristics for speciation as well as primary indicators for life stage identification. Motile sea lice were identified to species by the presence or absence of lunules. If lunules were absent the louse was identified as *Lepeophtheirus* spp. The louse was identified as *Caligus clemensi* if lunules were present.

Lepeophtheirus spp. sea lice found on captured specimens were not identified to species, but have been assumed to be *L. salmonis* due to the lack of documented infestation of Pacific salmon by other *Lepeophtheirus* species of sea lice (Jones and Nemec, 2004).

After microscopic analysis individual fish specimens were measured (fork length) in millimetres and weighed (recorded to the nearest tenth of a gram). Lengths and weights were also recorded on the data sheet with the specimen’s corresponding sea lice analysis results. The fish were then returned to their respective individual bags and the fish from each site were repackaged in the large re-sealable bags. All samples were then refrozen.

To allow for quality assurance of sea lice identification, all sea lice were placed in labelled vials and preserved in 70% isopropyl alcohol. Ten percent of the deloused fish specimens were randomly selected by specimen number and retained. Both the preserved lice and retained deloused fish specimens will be kept at the office of Mainstream Biological Consulting in Campbell River for five years.

2.4 Data Analysis

Surface water quality data collected for temperature and salinity was summarized to report the minimum and maximum values as well as the calculated averages. The data was graphed for report presentation.

Beach seine fish sample composition was summarized by species and site for each week. The recorded fork lengths and weights of the sample population were summarized to present minimum and maximum values as well as calculated averages. Sea lice infestation rates, including the number of infested fish and the number of sea lice identified, were determined for the sample population. Prevalence, as defined as the number of host fish found to have one or more sea lice compared to the total number of host fish examined, was determined for the sample population. Abundance, as defined as the total number of sea lice observed compared to the total number of host fish examined, was also determined for sample population. The intensity of sea lice infestation, as described by the number of sea lice found on a single salmon was summarized.

Statistical analysis of the spatial and temporal distribution of sea lice was not conducted. Spatial and temporal analysis has been limited to the simple presentation and discussion of the number of sea lice found on fish specimens collected from each site during each of the sampling events.

3.0 Results

The following sections outline the results of beach seine collection and subsequent sea lice inspection of juvenile salmonids collected from Clayoquot Sound, BC, in 2021. Water quality field data is presented in Appendix I, beach seine fish capture data is included in Appendix II and data on the juvenile salmon sample population including sea lice lab analysis results are located in Appendix III.

3.1 Water Quality Parameters

Surface measurements of water temperature and salinity, taken during beach seining at each of the 18 sites during the five sample periods, are presented in Figures 3 and 4 respectively. The field data recorded at each site is included in Appendix I.

Surface water temperature readings taken at the 18 sample sites showed an overall gradual increasing trend over the sample period (Figure 3). Recorded surface water temperatures ranged from a low of 7.4 °C recorded at site BS4 on March 24, 2021 to a high of 16.8 °C recorded at site FC5 on May 19, 2021 (Appendix I). Calculated weekly average surface water temperatures increased from 9.5°C for March 24/25, 2021 to 10.0 °C for April 7/8, 2021, to 13.4 °C for April 21/22, 2021, and for May 5/6, 2021, and finally increased to the high of 14.7 °C for May 19/20, 2021.

Recorded surface water salinity ranged from a low of 8.4 ppt recorded at Site HI1 on April 22, 2021, to a high of 30.3 ppt recorded at site MC1 on April 8, 2021 (Figure 4). The calculated weekly average surface water salinity fluctuated from 21.0 ppt for March 24/25, 2021, to 26.4 ppt for April 7/8, 2021, to 22.0 ppt for April 21/22, 2021, to 23.7 ppt for May 5/6, 2021 and 21.4 ppt for May 19/20, 2021.

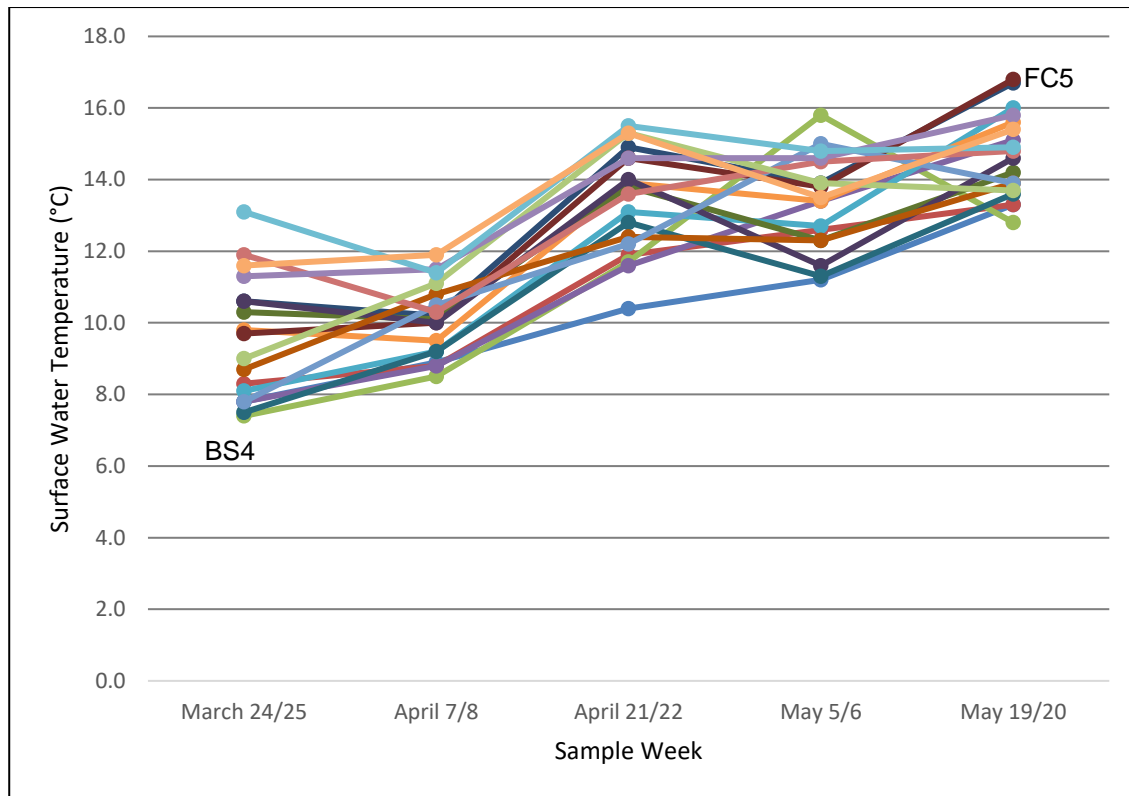


Figure 3: Surface water temperature recorded at 18 beach seine sites in Clayoquot Sound, BC between March 24, 2021 and May 20, 2021.

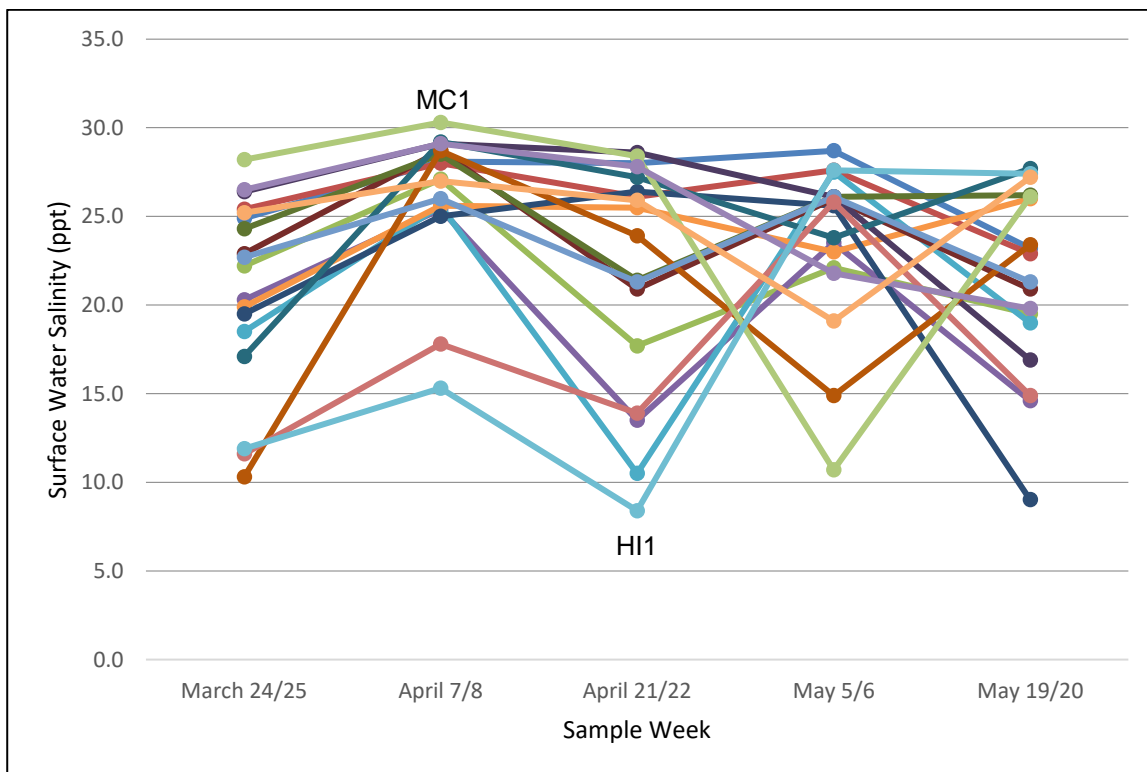


Figure 4: Salinity measurements recorded at 18 beach seine sites in Clayoquot Sound, BC between March 24, 2021 and May 20, 2021.

3.2 Fish Sample Composition

A total of 6982 fish were captured during beach seine sampling conducted in Clayoquot Sound, BC in 2021 (Table 2). A summary of the total number of fish captured and collected as specimens at each site over the collection period can be found in Table 3. Totals of fish captured and collected specimens at each site over the entire collection period can be found in Appendix II. Only chum salmon, coho salmon and threespine stickleback were retained as sample specimens and underwent analysis for sea lice infestation. Of the 6890 chum salmon captured, 854 individual chum salmon (12.4%) were retained and underwent lab analysis. All of the 32 coho salmon and 2 threespine stickleback captured were retained and kept for lab analysis.

No pink salmon or Atlantic salmon were captured during beach seine sampling conducted in Clayoquot Sound, BC in 2021.

Chum salmon (*O. keta*) smolts were captured in significantly greater numbers than any other species. A total of 6890 chum salmon were captured, representing 98.7 % of all captured salmonids. Chinook salmon were the next most commonly caught species with a total capture of 55 (0.8 %), followed by coho salmon, sockeye salmon and threespine stickleback. No chinook salmon or sockeye salmon were retained in 2021.

Table 2: The total of collected individuals of each fish species captured in Clayoquot Sound, BC in March, April and May 2021, and the percentage of the total capture population that they represent.

Common Name	Capture Totals (% of total capture population)	Collection Totals	Collection %
chum salmon	6890 (98.7 %)	854	12.4
coho salmon	32 (0.5 %)	32	100
chinook salmon	55 (0.8 %)	0	0
sockeye salmon	3 (0.04 %)	0	0
pink salmon	0 (0.0%)	0	0
Atlantic salmon	0 (0.0%)	0	0
threespine stickleback	2 (0.03 %)	2	100
All species	6982	888	12.7

Table 3: The number of captured fish (Capture Total) and the number of individual fish collected (Sample Total) from each of the 18 sample sites in Clayoquot Sound, BC in March, April and May 2021.

Site	Chum		Coho		Chinook		Sockeye		TSB		Capture Total	Sample Total
	Capture Total	Sample Total	Capture Total	Sample Total	Capture Total	Sample Total	Capture Total	Sample Total	Capture Total	Sample Total		
BS1	113	32	0	0	0	0	0	0	0	0	113	32
BS2	977	47	0	0	0	0	0	0	0	0	977	47
BS3	314	62	12	12	8	0	0	0	0	0	334	74
BS4	351	70	0	0	0	0	0	0	0	0	351	70
BS5	1090	72	1	1	4	0	0	0	0	0	1095	73
BS6	362	72	0	0	0	0	0	0	0	0	362	72
FC2	126	68	4	4	0	0	0	0	1	1	131	73
FC3	137	63	0	0	0	0	0	0	0	0	137	63
FC4	95	48	1	1	1	0	0	0	0	0	97	49
FC5	242	55	0	0	0	0	0	0	1	1	243	56
HI1	199	74	1	1	0	0	0	0	0	0	200	75
HI2	60	19	1	1	0	0	0	0	0	0	61	20
MC1	764	37	1	1	0	0	0	0	0	0	765	38
MC3	1205	43	0	0	0	0	0	0	0	0	1205	43
SD1	3	3	1	1	3	0	0	0	0	0	7	4
SI1	555	47	1	1	0	0	0	0	0	0	556	48
SI2	286	31	1	1	2	0	0	0	0	0	289	32
SI3	11	11	8	8	37	0	3	0	0	0	59	19
Total	6890	854	32	32	55	0	3	0	2	2	6982	888

3.3 Fish Sample Size Statistics

Summary statistics for the sample population of juvenile salmonids were completed for weight and fork length. Original fish length and weight data is included in Appendix III. Summary statistics were completed for chum salmon and coho salmon.

3.3.1 Chum salmon

Analysis of weight and fork length data was completed for the chum salmon sample population collected in Clayoquot Sound in 2021. The weight of 854 chum smolts collected during the five sampling events ranged from 0.3 g to 7.8 g and averaged 1.0 g (SD = 0.9). The fork length of the chum smolts ranged from 34 mm to 86 mm and averaged 44 mm (SD = 8.7).

3.3.2 Coho salmon

Analysis of weight and total length data was completed for the coho salmon sample population collected in Clayoquot Sound in 2021. The weight of 32 coho collected during the five sampling events ranged from 0.5 g to 17.5 g and averaged 8.3 g (SD = 3.3). The total length of the coho salmon ranged from 37 mm to 115 mm and averaged 87 mm (SD = 13.2).

3.4 Sea Lice Infestation

The results of the laboratory analysis for the presence of sea lice on the sample population collected in Clayoquot Sound in 2021 are presented in Table 4. The data recorded for each fish in the sample population during lab analysis is included in Appendix III. A total of 888 samples were collected at 18 sites in Clayoquot Sound in 2021 and were inspected for sea lice infestation. A total of 248 individuals in the sample population were found to be infested with 528 sea lice (Table 4). A total of 240 chum smolts and eight coho salmon were found to be infested with sea lice (Table 4). This data reflects the identification of sea lice of either species (*L. salmonis* and *C. clemensi*) on inspected juvenile salmon.

The sea lice prevalence in the sample population collected in Clayoquot Sound in 2021 was 27.9 %, and the abundance was 0.59 (Table 4). Sea lice counts of both species observed (*L. salmonis* and *C. clemensi*) were added together for the prevalence and abundance calculations for the entire sample population.

The intensity of sea lice infestation, as defined as the number of sea lice on a single sample, ranged from one louse found on 138 individuals to a maximum of 16 lice found on one individual. The average intensity was calculated by dividing the total number of sea lice by the number of infested fish which was 2.1 for chum and 2.6 for coho salmon (Table 4).

Table 4: Results of analysis for sea lice infestation on the sample population collected by beach seine in Clayoquot Sound, BC in 2021.

Species	Sample size (n)	Total number of lice observed	Total number of fish infested	Prevalence (%)	Abundance	Average Intensity
chum	854	507	240	28.1	0.59	2.1
coho	32	21	8	25.0	0.66	3.3
threespine stickleback	2	0	0	0	0	0
Total	888	528	248	27.9	0.59	2.1

3.4.1 Infestation Rates of Chum Salmon

A total of 854 chum salmon collected at 18 sites within Clayoquot Sound over five sample weeks were inspected for sea lice infestation. The results of the laboratory analysis are presented in Table 5 for each sample period by site for chum salmon. A total of 240 chum salmon were found to be infested with 507 sea lice. This data reflects the identification of sea lice of either species (*L. salmonis* and *C. clemensi*) on inspected chum salmon and these combined numbers were used to calculate prevalence, abundance and intensity.

The largest number of chum salmon infested with sea lice (82 chum) occurred during the May 5/6, 2021 sample period and the greatest number of sea lice (261 sea lice) were found on samples collected on May 5/6, 2021 (Table 5). Site BS6 had the highest number of infested chum salmon (38) with the highest number of lice (126) (Table 5).

A total of 240 chum salmon were found to be infested with at least one louse. The prevalence of sea lice on the chum salmon sample (n=854) collected in Clayoquot Sound in 2021 was 28.1 %. Sea lice prevalence was calculated by site and is presented in Table 6. Sea lice prevalence calculated by site for the chum salmon sample population was highly variable ranging from a low of 0 % at sites SD1 and SI3 to a high of 57.4 % at site BS2.

A total of 507 sea lice were identified during laboratory analysis of retained chum salmon. The abundance of sea lice on the chum salmon sample population (n=854) collected in Clayoquot Sound in 2021 was 0.59. Sea lice abundance was calculated by site and is presented in Table 6. Sea lice abundance calculated by site was also highly variable ranging from a low of 0 at sites SD1 and SI3 to a high of 1.79 at site FC3.

The calculated average intensity of sea lice infestation for the chum salmon sample population was 2.1 (Table 4). The intensity of sea lice infestation, as defined as the number of sea lice on a single salmon, ranged from one louse found on 135 individuals to a maximum of 16 lice found on one juvenile chum salmon. The percentage of the chum salmon sample population with the number of sea lice per sample was graphed and is presented in Figure 5. As shown in this graph, 71.9 % of the chum sample population were not infested with sea lice, 25.4 % were infested with less than five sea lice and 2.7 % of the chum salmon sample population was infested with five or more sea lice.

The sampled sites were also grouped by sampling area and sea lice prevalence, abundance and intensity were calculated for the chum salmon sample population collected in in these areas (Table 7).

Table 5: The number of sea lice found on chum salmon collected in Clayoquot Sound in 2021 summarized by the 18 sites where beach seining was conducted.

Site	Sample Week															Total		
	March 24/25, 2021			April 7/8, 2021			April 21/22, 2021			May 5/6, 2021			May 19/20, 2021					
	# of Chum Analyzed	# of Infested Chum	# of Lice	# of Chum Analyzed	# of Infested Chum	# of Lice	# of Chum Analyzed	# of Infested Chum	# of Lice	# of Chum Analyzed	# of Infested Chum	# of Lice	# of Chum Analyzed	# of Infested Chum	# of Lice	# of Chum Analyzed	# of Infested Chum	# of Lice
BS1	15	0	0	16	7	11	1	1	1							32	8	12
BS2	15	2	3				9	7	11	15	14	32	8	4	10	47	27	56
BS3	15	2	2	15	3	4	15	4	4	15	4	5	2	2	2	62	15	17
BS4	10	0	0	15	1	1	15	1	1	15	9	20	15	8	12	70	19	34
BS5	15	1	1	15	0	0	15	0	0	15	1	1	12	0	0	72	2	2
BS6	15	2	2	15	2	2	12	7	9	15	15	87	15	12	26	72	38	126
FC2	15	0	0	15	2	2	15	9	10	8	7	14	15	7	9	68	25	35
FC3	15	1	1	15	3	4	15	9	20	15	13	72	3	3	16	63	29	113
FC4	2	0	0	14	1	1	15	3	3	15	11	19	2	1	2	48	16	25
FC5	15	3	3	15	6	8	15	1	2	10	5	8				55	15	21
HI1	15	0	0	15	0	0	15	0	0	14	1	1	15	3	3	74	4	4
HI2	1	0	0	15	0	0	1	0	0	2	1	1				19	1	1
MC1				15	2	2	15	1	1	2	0	0	5	3	8	37	6	11
MC3	13	3	6	15	7	8	15	12	20							43	22	34
SD1				1	0	0	2	0	0							3	0	0
SI1	15	0	0	15	6	6	1	1	2	1	1	1	15	3	3	47	11	12
SI2				15	0	0	15	2	4				1	0	0	31	2	4
SI3	2	0	0	7	0	0	1	0	0	1	0	0				11	0	0
Total	178	14	18	233	40	49	192	58	88	143	82	261	108	46	91	854	240	507

Table 6: Calculated sea lice prevalence, abundance and intensity by site as determined for chum salmon collected in Clayoquot Sound, BC in 2021.

Site	# of Chum Analyzed	# of Infested Chum	# of Lice	Sea Lice Prevalence (%)	Sea Lice Abundance	Sea Lice Intensity
BS1	32	8	12	25.0	0.38	1.5
BS2	47	27	56	57.4	1.19	2.1
BS3	62	15	17	24.2	0.27	1.1
BS4	70	19	34	27.1	0.49	1.8
BS5	72	2	2	2.8	0.03	1.0
BS6	72	38	126	52.8	1.75	3.3
FC2	68	25	35	36.8	0.51	1.4
FC3	63	29	113	46.0	1.79	3.9
FC4	48	16	25	33.3	0.52	1.6
FC5	55	15	21	27.3	0.38	1.4
HI1	74	4	4	5.4	0.05	1.0
HI2	19	1	1	5.3	0.05	1.0
MC1	37	6	11	16.2	0.30	1.8
MC3	43	22	34	51.2	0.79	1.5
SD1	3	0	0	0.0	0.00	0.0
SI1	47	11	12	23.4	0.26	1.1
SI2	31	2	4	6.5	0.13	2.0
SI3	11	0	0	0.0	0.00	0.0
Total	854	240	507	28.1	0.59	2.1

Table 7: Calculated sea lice prevalence, abundance and intensity by sampling area as determined for chum salmon collected in Clayoquot Sound, BC in 2021.

Sampling Area (# of Sites)	# of Chum Analyzed	# of Infested Chum	# of Lice	Sea Lice Prevalence (%)	Sea Lice Abundance	Sea Lice Intensity
SI (3)	89	13	16	14.6	0.18	1.2
MC (2)	80	28	45	35.0	0.56	1.6
HI (2)	93	5	5	5.4	0.05	1.0
BS (6)	355	109	247	30.7	0.70	2.3
FC (4)	234	85	194	36.3	0.83	2.3
SD (1)	3	0	0	0.0	0.00	0.0
Total	854	240	507	28.1	0.59	2.1

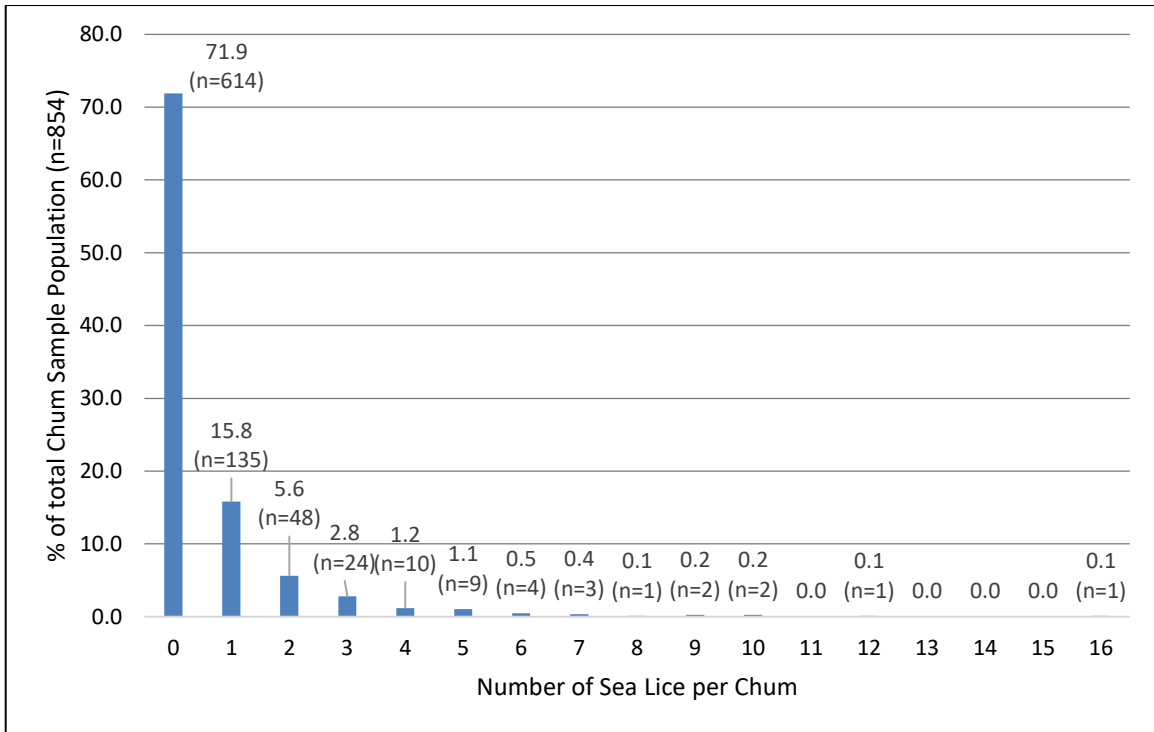


Figure 5: The number of sea lice per chum salmon graphed as a percentage of the total chum sample population collected in Clayoquot Sound in 2021.

3.4.2 Infestation Rates of Coho Salmon

A total of 32 coho salmon were collected in Clayoquot Sound in 2021 during the five sampling periods at sites BS3, BS5, FC2, FC4, HI1, HI2, MC1, SD1, SI1, SI2, and SI3 (Table 3). Eight coho salmon were found to be infested with 21 lice resulting in a species prevalence of 25.0 %, an abundance of 0.66 and an average intensity of 2.6 (Table 4). The infested coho salmon were collected at sites SI3, MC3, MC1, BS3, FC2, and FC4.

3.5 Infestation Rates by Sea Lice Species

A total of 496 *Lepeophtheirus salmonis* sea lice of various life stages were identified on 230 individuals and 32 *Caligus clemensi* sea lice were found on 24 of the 888 samples analyzed in the lab (Appendix III). There were 6 samples that were infested with both *L. salmonis* and *C. clemensi*.

3.5.1 Infestation Rates by Sea Lice Species on Chum Salmon

An analysis of the species of sea lice identified on the 240 infested chum salmon collected in Clayoquot Sound in 2021 was completed and is presented in Table 8. A total of 477 *Lepeophtheirus salmonis* sea lice of various life stages were identified on 223 juvenile chum salmon and 30 *Caligus clemensi* sea lice were found on 23 of the juvenile chum salmon analyzed in the lab (Appendix III). There were 6 chum salmon infested with lice from both species. The analysis of the species of sea lice on infested chum salmon was also summarized by grouped sampling area and presented in Table 9.

Table 8: The number of sea lice in each life stage by species identified on chum salmon from Clayoquot Sound 2021. LEP = *Lepeophtheirus salmonis* CAL = *Caligus clemensi*

Life Stage ¹	Number of lice
LEP Co	148
LEP C1	151
LEP C2	136
LEP PAM	23
LEP PAF	16
LEP AM	2
LEP AF	1
TOTAL LEP	477
CAL Co	3
CAL C1	4
CAL C2	1
CAL C3	8
CAL C4	2
CAL PAM	5
CAL PAF	5
CAL AM	1
CAL AF	1
TOTAL CAL	30

¹ Lice life stage codes: Co = copepodid, C1-4 = chalimus 1-4, PAM = pre-adult male, PAF = pre-adult female, AM = adult male, AF = adult female.

Table 9: The number of sea lice in each life stage by species identified on chum salmon grouped by collection area in Clayoquot Sound in 2021. LEP = *Lepeophtheirus salmonis* CAL = *Caligus clemensi*

Life Stage ¹	Sampling Area (Number of fish analyzed)						
	All Sites (854)	SI (89)	MC (80)	HI (93)	BS (355)	FC (234)	SD (3)
LEP Co	148	4	5	0	100	39	0
LEP C1	151	4	19	1	67	60	0
LEP C2	136	4	5	3	60	64	0
LEP PAM	23	1	3	0	7	12	0
LEP PAF	16	0	1	0	4	11	0
LEP AM	2	0	0	0	0	2	0
LEP AF	1	0	1	0	0	0	0
TOTAL LEP	477	13	34	4	238	188	0
CAL Co	3	0	1	0	2	0	0
CAL C1	4	1	2	0	1	0	0
CAL C2	1	0	1	0	0	0	0
CAL C3	8	1	2	0	3	2	0
CAL C4	2	0	1	1	0	0	0
CAL PAM	5	1	0	0	1	3	0
CAL PAF	5	0	3	0	2	0	0
CAL AM	1	0	1	0	0	0	0
CAL AF	1	0	0	0	0	1	0
TOTAL CAL	30	3	11	1	9	6	0

¹ Lice life stage codes: Co = copepodid, C1-4 = chalimus 1-4, PAM = pre-adult male, PAF = pre-adult female, AM = adult male, AF = adult female.

3.5.2 Infestation Rates by Sea Lice Species on Coho Salmon

There were 7 coho salmon infested with 19 *Lepeophtheirus salmonis* sea lice of various life stages and 2 *Caligus clemensi* sea lice were found on one of the juvenile chum salmon analyzed in the lab (n=32) collected in Clayoquot Sound in 2021.

4.0 Conclusions

This report presents the data from the seventh year of beach seining and sea lice analysis conducted for wild juvenile salmonid monitoring in Clayoquot Sound, BC by Cermaq Canada. This report is limited to the summary and presentation of data from sampling and analysis completed in 2021. Historic sea lice data for infestation rates on chum salmon from 2016 to 2021 is included in Appendix IV.

A total of 886 juvenile salmonids underwent analysis for sea lice infestation including 854 chum salmon and 32 coho salmon. Two threespine stickleback underwent analysis for sea lice infestation. No pink salmon or Atlantic salmon were captured during sampling completed in Clayoquot Sound in 2021. The chinook salmon and sockeye salmon captured were not retained for sea lice analysis.

From the total sample population 248 samples were infested with 528 sea lice. The calculated prevalence for the total sample population was 27.9 % and the sea lice abundance was 0.59 for the sample population collected in Clayoquot Sound in 2021.

Chum salmon smolts were captured in significantly greater numbers than any other species. A total of 6890 chum salmon were captured, representing 98.7 % of all captured samples. Of the 6890 chum captured, 854 were kept for lab analysis for sea lice infestation. A total of 240 chum smolts were found to be infested with 507 lice resulting in a calculated prevalence of 28.1 %, abundance of 0.59 and an average intensity of 2.1 for the chum sample population.

A total of 32 coho salmon were captured and retained for sea lice analysis. Eight coho smolts were found to be infested with 21 sea lice resulting in a calculated prevalence of 25.0 %, abundance of 0.66 and an intensity of 2.6 for the coho salmon sample population.

Two threespine stickleback were captured and retained for sea lice analysis. No sea lice were identified during lab analysis.

A total of 496 *Lepeophtheirus salmonis* sea lice of various life stages were identified on 230 individuals and 32 *Caligus clemensi* sea lice were found on 24 of the 888 samples analyzed in the lab. There were 6 samples that were infested with both *L. salmonis* and *C. clemensi*.

For the chum salmon sample population, a total of 477 *Lepeophtheirus salmonis* sea lice of various life stages were identified on 223 juvenile chum salmon and 30 *Caligus clemensi* sea lice were found on 23 of the juvenile chum salmon analyzed in the lab. There were 6 chum salmon infested with lice from both species.

For the coho salmon sample population, there were 7 coho salmon infested with 19 *Lepeophtheirus salmonis* sea lice of various life stages and 2 *Caligus clemensi* sea lice were found on one of the juvenile chum salmon analyzed in the lab (n=32) collected in Clayoquot Sound in 2021.

A comparison of the prevalence and abundance of sea lice found on chum salmon was completed for sample data from 2016 to 2021 collected in Clayoquot Sound, BC. This data is presented in a summary table in Appendix IV.

5.0 References

- Hamre L.A., C Eichner, C.M.A. Caipang, S.T. Dalvin, J.E. Bron, F. Nilsen, G. Boxshall and R. Skern-Mauitzen. 2013. The Salmon Louse *Lepeophtheirus salmonis* (Copepoda: Caligidae) Life Cycle Has Only Two Chalimus Stages. PLoS ONE 8(9): e73539.
- Healey M.C. 1991. Life history of chinook salmon (*Oncorhynchus tshawytscha*). In: Pacific Salmon Life Histories. C Grott, L Margolis (eds). UBC Press, Vancouver. Pp 313-393.
- Jones S. and A. Nemec. 2004. Pink Salmon Action Plan Research. Part II: Sea Lice on Juvenile Salmon and on Three-spine Sticklebacks in 2003. PSARC Working Paper H2004-01.
- Johnson S.C. and L.J. Albright. 1991a. The developmental stages of *Lepeophtheirus salmonis* (Kroyer, 1837) (Copepoda: Caligidae). Canadian Journal of Zoology 69: 929-950.
- Johnson S.C. and L.J. Albright. 1991b. Development, growth and survival of *Lepeophtheirus salmonis* (Copepoda: Caligidae) under laboratory conditions. Journal of the Marine Biological Association of the UK 71: 425-436.
- Kabata Z. 1972. Developmental stages of *Caligus clemensi* (Copepoda: Caligidae) from fishes of British Columbia. Journal of the Fisheries Research Board of Canada 29: 1571-1593.
- Kabata Z. 1974. The species of *Lepeophtheirus* (Copepoda: Caligidae), from fishes of British Columbia. Journal of the Fisheries Research Board of Canada 30: 729-759.
- Margolis L., J.R. Arthur. 1979. Synopsis of the parasites of fishes of Canada. Bulletin of the Fisheries Research Board of Canada, Number 199. Ottawa. 269 pages.
- McDonald T.E., and L. Margolis. 1995. Synopsis of the parasites of fishes of Canada (1978-1993). Canadian Special Publication of Fisheries and Aquatic Sciences No. 122. National Research Council of Canada, Ottawa. 265 pages.
- Morton A., R. Routledge, C. Peet and A. Ladwig. 2004. Sea Lice (*Lepeophtheirus salmonis*) infection rates on juvenile pink (*Oncorhynchus gorbuscha*) and chum (*Oncorhynchus keta*) salmon in the near shore marine environment of British Columbia, Canada. Canadian Journal of Fisheries and Aquatic Sciences 61: 147-157.
- Parker R.R. and L. Margolis. 1964. A new species of parasitic copepod, *Caligus clemensi* sp. nov. (Clogoida: Caligidae), from pelagic fishes in the coastal waters of British Columbia. Journal of Fisheries Research Board of Canada 21: 873-889.
- Pollard W.R., G.F. Hartman, C. Groot, and P. Edgell. 1997. Field Identification of Coastal Juvenile Salmonids. Published by Harbour Publishing for the Federal Department of Fisheries and Oceans and MacMillan Bloedel Ltd. Madeira Park, BC Canada.
- Salo E.O. 1991. Life history of chum salmon (*Oncorhynchus keta*). In: Pacific Salmon Life Histories. C Grott, L Margolis (eds). UBC Press, Vancouver. Pp 233-309.

Sandercock F.K. 1991. Life history of coho salmon (*Oncorhynchus kisutch*). In: Pacific Salmon Life Histories. C. Grott, L. Margolis (eds). UBC Press, Vancouver. Pp 397-445.

Appendix I – Field Data

Date	Time	Site Name	Salinity (ppt)	Temperature (deg C.)
			0.2m	0.2m
03-24-21	8:13	BS1	24.9	7.8
03-24-21	9:13	BS3	25.4	8.3
03-24-21	9:51	BS4	22.2	7.4
03-24-21	10:21	BS5	20.3	7.8
03-24-21	11:04	FC4	18.5	8.1
03-24-21	11:25	FC2	19.9	9.8
03-24-21	11:59	FC3	19.5	10.6
03-24-21	12:21	FC5	22.9	9.7
03-24-21	13:00	BS6	24.3	10.3
03-24-21	13:35	BS2	26.4	10.6
03-25-21	9:23	SD1	17.1	7.5
03-25-21	9:58	SI1	10.3	8.7
03-25-21	10:40	SI2	22.7	7.8
03-25-21	11:18	SI3	11.6	11.9
03-25-21	11:46	MC1	28.2	9.0
03-25-21	12:17	MC3	26.5	11.3
03-25-21	13:02	HI1	11.9	13.1
03-25-21	13:45	HI2	25.2	11.6
04-07-21	8:38	BS1	28.1	8.9
04-07-21	9:27	BS3	28.0	8.8
04-07-21	10:13	BS4	27.1	8.5
04-07-21	10:56	BS5	25.4	8.8
04-07-21	11:45	FC4	25.6	9.2
04-07-21	12:09	FC2	25.6	9.5
04-07-21	12:32	FC3	25.0	10.2
04-07-21	13:13	FC5	28.7	10.0
04-07-21	13:43	BS6	28.5	10.1
04-07-21	14:18	BS2	29.1	10.0
04-08-21	11:03	SD1	29.2	9.2
04-08-21	11:34	SI1	28.7	10.8
04-08-21	12:09	SI2	26.0	10.5
04-08-21	12:49	SI3	17.8	10.3
04-08-21	13:17	MC1	30.3	11.1
04-08-21	13:53	MC3	29.1	11.5
04-08-21	14:44	HI1	15.3	11.4
04-08-21	15:16	HI2	27.0	11.9
04-21-21	8:17	BS1	28.0	10.4

Date	Time	Site Name	Salinity (ppt)	Temperature (deg C.)
			0.2m	0.2m
04-21-21	9:01	BS3	26.1	11.9
04-21-21	9:49	BS4	17.7	11.7
04-21-21	10:28	BS5	13.5	11.6
04-21-21	11:24	FC4	10.5	13.1
04-21-21	12:04	FC2	25.5	13.9
04-21-21	12:49	FC3	26.4	14.9
04-21-21	13:22	FC5	20.9	14.6
04-21-21	13:58	BS6	21.4	13.8
04-21-21	14:26	BS2	28.6	14.0
04-22-21	9:01	SD1	27.2	12.8
04-22-21	9:27	SI1	23.9	12.4
04-22-21	9:53	SI2	21.3	12.2
04-22-21	10:30	SI3	13.9	13.6
04-22-21	10:58	MC1	28.4	15.3
04-22-21	11:21	MC3	27.8	14.6
04-22-21	12:57	HI1	8.40	15.5
04-22-21	13:07	HI2	25.9	15.3
05-19-21	9:54	SD1	23.2	13.3
05-19-21	10:12	SI1	22.9	13.3
05-19-21	10:57	SI2	19.5	12.8
05-19-21	11:26	SI3	14.6	15.1
05-19-21	12:01	MC1	19.0	16.0
05-19-21	12:28	MC3	26.0	15.6
05-19-21	13:09	HI1	9.0	16.7
05-19-21	13:44	HI2	20.9	16.8
05-19-21	14:30	BS1	26.2	14.2
05-19-21	14:55	BS3	16.9	14.6
05-20-21	9:39	BS2	27.7	13.6
05-20-21	10:06	BS6	23.4	13.9
05-20-21	10:43	BS4	21.3	13.9
05-20-21	11:22	BS5	14.9	14.8
05-20-21	12:00	FC5	26.1	13.7
05-20-21	12:21	FC4	19.8	15.8
05-20-21	12:47	FC2	27.4	14.9
05-20-21	13:24	FC3	27.2	15.4

Appendix II – Capture and Collection Sample Totals

Date	Time	Site Name	Weather Comments	Tide Stage	Pink Captured	Pink Retained	Chum Captured	Chum Retained	Coho Captured	Coho Retained	Chinook Captured	Chinook Retained	Sockeye Captured	Sockeye Retained	TSB Captured	TSB Retained	Salmonid Mortalities	Comments
03-24-21	8:13	BS1	Overcast, calm	High	0	67	15	0	0	0	0	0	0	0	0	0	0	1 Starry flounder, ~15 sanddabs, Live Lice
03-24-21	9:13	BS3	Overcast, calm	High	0	57	15	0	0	1	0	0	0	0	0	0	0	Live Lice
03-24-21	9:51	BS4	Overcast, chop	High	0	10	10	0	0	0	0	0	0	0	0	0	0	
03-24-21	10:21	BS5	Overcast, calm	High	0	109	15	0	0	0	0	0	0	0	0	0	0	2 sculpin, Live Lice
03-24-21	11:04	FC4	Calm, overcast	High	0	2	2	0	0	0	0	0	0	0	0	0	0	
03-24-21	11:25	FC2	Sun/cloud/calm	High	0	34	15	0	0	0	0	0	0	0	0	0	0	2 sculpin, Live Lice
03-24-21	11:59	FC3	Calm, overcast	High	0	17	15	0	0	0	0	0	0	0	0	0	0	3 sculpin, Live Lice
03-24-21	12:21	FC5	Sun/cloud, calm	High	0	48	15	0	0	0	0	0	0	1	1	0	0	Live Lice
03-24-21	13:00	BS6	Calm, overcast	High	0	102	15	0	0	0	0	0	0	0	0	0	0	Live Lice, 1 sculpin
03-24-21	13:35	BS2	Overcast, calm	Mid	0	651	15	0	0	0	0	0	0	0	0	0	0	Live Lice
03-25-21	9:23	SD1	Sun, calm	High	0	0	0	0	0	0	0	0	0	0	0	0	0	No fish captured, jellies
03-25-21	9:58	SI1	Sun, calm	High	0	34	15	0	0	0	0	0	0	0	0	0	0	Live Lice
03-25-21	10:40	SI2	Sun, calm	High	0	0	0	0	0	0	0	0	0	0	0	0	0	No fish captured, Not much beach at high tide with woody debris
03-25-21	11:18	SI3	Sun, calm	High	0	2	2	1	1	0	0	0	0	0	0	0	0	No fish captured
03-25-21	11:46	MC1	Sun, calm	High	0	0	0	0	0	0	0	0	0	0	0	0	0	1 pipefish, 1 shiner perch, 2 sculpin
03-25-21	12:17	MC3	Sun, calm	High	0	13	13	0	0	0	0	0	0	0	0	0	0	1 juvenile lingcod
03-25-21	13:02	HI1	Sun, calm	High	0	52	15	0	0	0	0	0	0	0	0	0	0	1 starry flounder, Live Lice
03-25-21	13:45	HI2	Sun, calm	Mid	0	1	1	0	0	0	0	0	0	0	0	0	0	2 sculpin, 1 pipefish
04-07-21	8:38	BS1	Rain, calm	Mid	0	45	16	0	0	0	0	0	0	0	0	0	0	Flounders, Live Lice
04-07-21	9:27	BS3	Rain, calm	Mid	0	117	15	3	3	4	0	0	0	0	0	0	0	Live Lice
04-07-21	10:13	BS4	Rain, calm	High	0	86	15	0	0	0	0	0	0	0	0	0	0	1 shiner perch, 1 red rockfish, Live Lice
04-07-21	10:56	BS5	Overcast, calm	High	0	480	15	0	0	0	0	0	0	0	0	0	0	Flippers offsite, Live Lice
04-07-21	11:45	FC4	Overcast, calm	High	0	14	14	0	0	0	0	0	0	0	0	0	0	No bycatch
04-07-21	12:09	FC2	Overcast, calm	High	0	18	15	0	0	0	0	0	0	0	0	1	0	Rock in bunt
04-07-21	12:32	FC3	Overcast, calm	High	0	33	15	0	0	0	0	0	0	0	0	0	0	Live Lice, 1 red rock crab
04-07-21	13:13	FC5	Overcast, calm	High	0	108	15	0	0	0	0	0	0	0	0	0	0	Live Lice
04-07-21	13:43	BS6	Overcast, calm	Mid	0	71	15	0	0	0	0	0	0	0	0	0	0	Live Lice, 1 flounder, 6 sculpins, 4 sand lance
04-07-21	14:18	BS2	Overcast, calm	Mid	0	0	0	0	0	0	0	0	0	0	0	0	0	Kelp clingfish, 1 sculpin
04-08-21	11:03	SD1	Sun, calm	High	0	1	1	0	0	2	0	0	0	0	0	0	0	1 shiner perch
04-08-21	11:34	SI1	Sun, calm	High	0	480	15	0	0	0	0	0	0	0	0	0	0	Live Lice, No bycatch

Date	Time	Site Name	Weather Comments	Tide Stage	Pink Captured	Pink Retained	Chum Captured	Chum Retained	Coho Captured	Coho Retained	Chinook Captured	Chinook Retained	Sockeye Captured	Sockeye Retained	TSB Captured	TSB Retained	Salmonid Mortalities	Comments
04-08-21	12:09	SI2	Sun, calm	High	0	74	15	0	0	0	0	0	0	0	0	0	0	1 shiner perch, 2 sculpin, Live Lice
04-08-21	12:49	SI3	Sun/cloud, calm	High	0	7	7	5	5	31	0	0	0	0	0	0	0	No bycatch
04-08-21	13:17	MC1	Sun/cloud, calm	Mid	0	740	15	0	0	0	0	0	0	0	0	0	0	Live Lice, 3 sculpins, 1 gunnel
04-08-21	13:53	MC3	Cloud, calm	Mid	0	1100	15	0	0	0	0	0	0	0	0	1	0	Live Lice, 4 pipefish, 1 juvenile lingcod, kelp clingfish
04-08-21	14:44	HI1	Cloud, calm	Mid	0	63	15	0	0	0	0	0	0	0	0	0	0	Live Lice, 4 pipefish, 2 flounder, 3 sculpin
04-08-21	15:16	HI2	Cloud, calm	Mid	0	56	15	0	0	0	0	0	0	0	0	0	0	2 sculpins, Live Lice
04-21-21	8:17	BS1	Fog, calm	High	0	1	1	0	0	0	0	0	0	0	0	0	0	1 sand lance, abundant flounder
04-21-21	9:01	BS3	Fog, calm	Mid	0	92	15	0	0	1	0	0	0	0	0	0	0	Live Lice, 3 green crabs, 1 cutthroat
04-21-21	9:49	BS4	Sun, calm	Mid	0	97	15	0	0	0	0	0	0	0	0	0	0	1 sculpin, Live Lice
04-21-21	10:28	BS5	Sun, calm	Mid	0	104	15	0	0	0	0	0	0	0	0	0	0	Live Lice, 1 sculpin, 1 pipefish
04-21-21	11:24	FC4	Sun, calm	Mid	0	57	15	0	0	0	0	0	0	0	0	0	0	5 pipefish, 2 gunnels, 1 sculpin, Live Lice
04-21-21	12:04	FC2	Sun, calm	Mid	0	49	15	0	0	0	0	0	0	1	1	0	0	Live Lice, 2 sculpins
04-21-21	12:49	FC3	Sun, calm	Low	0	20	15	0	0	0	0	0	0	0	0	0	0	4 pipefish, 1 sculpin, 1 juvenile lingcod, 1 kelp crab, 4 gunnels, 6 flounder. Prop caught during set. Live Lice.
04-21-21	13:22	FC5	Sun, calm	Low	0	76	15	0	0	0	0	0	0	0	0	0	0	Live Lice. 1 green crab, 10 gunnels, 15 sculpins, 20 pipefish, 1 red rock crab
04-21-21	13:58	BS6	Sun, calm	Low	0	12	12	0	0	0	0	0	0	0	0	0	0	15 sculpins, 6 pipefish
04-21-21	14:26	BS2	Sun, calm	Low	0	9	9	0	0	0	0	0	0	0	0	0	0	6 sculpins, 10 flounders
04-22-21	9:01	SD1	Sun, calm	High	0	2	2	0	0	0	0	0	0	0	0	0	0	1 kelp perch, 7 pile perch
04-22-21	9:27	SI1	Sun, calm	Mid	0	1	1	0	0	0	0	0	0	0	0	0	0	1 sculpin, 1 pipefish
04-22-21	9:53	SI2	Sun, calm	Mid	0	211	15	1	1	0	0	0	0	0	0	0	0	Gunnel, 3 pipefish, 1 sculpin, Live Lice.
04-22-21	10:30	SI3	Sun, calm	Mid	0	1	1	1	1	3	0	0	0	0	0	0	0	6 flounder, 2 sculpin, 1 sand lance, jellies
04-22-21	10:58	MC1	Sun, calm	Mid	0	17	15	0	0	0	0	0	0	0	0	0	0	1 pile perch, 1 kelp perch, 1 striped perch, 3 flounder, 3 sculpins. Live Lice.
04-22-21	11:21	MC3	Sun, calm	Mid	0	92	15	0	0	0	0	0	0	0	0	0	0	Live Lice, lead over.
04-22-21	12:57	HI1	Sun, waves	Mid	0	52	15	0	0	0	0	0	0	0	0	3	0	No bycatch, Live Lice.
04-22-21	13:07	HI2	Sun, calm	Mid	0	1	1	0	0	0	0	0	0	0	0	0	0	1 sculpin
05-19-21	9:54	SD1	Sunny, warm, calm	High	0	0	0	0	0	0	0	0	0	0	0	0	0	1 rockfish
05-19-21	10:12	SI1	Sunny warm, calm	High	0	39	15	0	0	0	0	0	0	0	0	0	0	30 shiner perch, 6 gunnels, pipefish, 1 herring, 5 sculpin. Live Lice.
05-19-21	10:57	SI2	Sunny, warm, calm	Mid	0	1	1	0	0	2	0	0	0	0	0	0	0	Flounder, gunnel, pipefish, sculpin, killed 15 green crab. Lots of salmon jumping in deeper water.
05-19-21	11:26	SI3	Sunny, warm, calm	Mid	0	0	0	0	0	3	0	0	0	0	0	0	0	Sanddabs, killed 7 green crab, 1 pile perch, 1 starry flounder, 10 gobies

Date	Time	Site Name	Weather Comments	Tide Stage	Pink Captured	Pink Retained	Chum Captured	Chum Retained	Coho Captured	Coho Retained	Chinook Captured	Chinook Retained	Sockeye Captured	Sockeye Retained	TSB Captured	TSB Retained	Salmonid Mortalities	Comments
05-19-21	12:01	MC1	Sunny, warm, light breeze	Mid	0	5	5	1	1	0	0	0	0	0	0	0	0	Red rock crab, 4 perch, 3 juvenile greenling
05-19-21	12:28	MC3	Sunny, warm, light breeze	Low	0	0	0	0	0	0	0	0	0	0	0	0	0	1 rock crab, 1 sea cucumber, 12 greenling, juvenile greenling, 30 rockfish, many perch
05-19-21	13:09	HI1	Sunny, warm, light wind	Low	0	18	15	1	1	0	0	0	0	0	0	0	0	4 sea cucumbers, 1 leather star, 2 pipefish, 2 sculpins. Live Lice.
05-19-21	13:44	HI2	Sunny, warm, light breeze	Low	0	0	0	0	0	0	0	0	0	0	0	0	0	1 pipefish, 2 sculpins, 2 sand dabs
05-19-21	14:30	BS1	Sunny, warm, windy + waves	Low	0	0	0	0	0	0	0	0	0	0	0	0	0	Abundant sanddabs, 10 gunnels, 5 Dungeness crabs
05-19-21	14:55	BS3	Sunny warm, windy, waves	Low	0	2	2	9	9	0	0	0	0	0	0	0	0	Abundant seaweed, 150 shiners, 32 green crab, 2 gunnels, 6 pipefish
05-20-21	9:39	BS2	Sunny warm, calm	High	0	8	8	0	0	0	0	0	0	0	0	0	0	1 green crab, 2 gunnels, 1 sculpin, 4 juvenile greenling, 1 flatfish
05-20-21	10:06	BS6	Sunny, warm, calm	High	0	102	15	0	0	0	0	0	0	0	0	0	0	4 pipefish, 10 juvenile gunnels, 5 sculpins, 10 greenlings. Live Lice.
05-20-21	10:43	BS4	Sunny, warm, calm	Mid	0	34	15	0	0	0	0	0	0	0	0	0	0	Juvenile greenling, gunnel, sculpins. Live Lice.
05-20-21	11:22	BS5	Sunny, warm, light winds	Mid	0	12	12	0	0	1	0	0	0	0	0	0	0	1 pipefish, 2 green crab
05-20-21	12:00	FC5	Sunny, warm, light winds	Mid	0	0	0	0	0	0	0	0	0	0	0	0	0	Abundant gunnel, 2 red rock crab, rock fish, juvenile greenling, shiner perch
05-20-21	12:21	FC4	Sunny, warm, light winds	Mid	0	2	2	1	1	0	0	0	0	0	0	0	0	Used Garmin InReach for coordinates. Gunnel, sculpin, perch, pipefish, juvenile rock fish, juvenile ling
05-20-21	12:47	FC2	Sunny, warm, moderate wind	Mid	0	17	15	4	4	0	0	0	0	0	0	0	0	Used Garmin InReach for coordinates. Live Lice. Gunnels, 2 rainbow trout, shiner perch, 3 gobies, sculpins
05-20-21	13:24	FC3	Sunny, warm, moderate wind	Low	0	3	3	0	0	0	0	0	0	0	0	0	0	Used Garmin InReach for coordinates. Perch, gunnel, pipefish, tube snout, flatfish, sculpin, kelp crabs.

Appendix III – Sea Lice Analysis Data

DATE COLLECTED	SITE	FISH SPECIES	LENGTH IN MM	WEIGHT IN G	LEP Co	LEP C1	LEP C2	LEP PAM	LEP PAF	LEP AM	LEP AF	CAL Co	CAL C1	CAL C2	CAL C3	CAL C4	CAL PAM	CAL_PAF	CAL AM	CAL AF
24-Mar-21	BS1	Chum	43	0.8	0	0	0	0	0	0	0	0	0	0	0	0	0	0	0	0
24-Mar-21	BS1	Chum	39	0.4	0	0	0	0	0	0	0	0	0	0	0	0	0	0	0	0
24-Mar-21	BS1	Chum	37	0.3	0	0	0	0	0	0	0	0	0	0	0	0	0	0	0	0
24-Mar-21	BS1	Chum	36	0.5	0	0	0	0	0	0	0	0	0	0	0	0	0	0	0	0
24-Mar-21	BS1	Chum	35	0.4	0	0	0	0	0	0	0	0	0	0	0	0	0	0	0	0
24-Mar-21	BS1	Chum	37	0.4	0	0	0	0	0	0	0	0	0	0	0	0	0	0	0	0
24-Mar-21	BS1	Chum	39	0.5	0	0	0	0	0	0	0	0	0	0	0	0	0	0	0	0
24-Mar-21	BS1	Chum	39	0.4	0	0	0	0	0	0	0	0	0	0	0	0	0	0	0	0
24-Mar-21	BS1	Chum	37	0.4	0	0	0	0	0	0	0	0	0	0	0	0	0	0	0	0
24-Mar-21	BS1	Chum	37	0.5	0	0	0	0	0	0	0	0	0	0	0	0	0	0	0	0
24-Mar-21	BS1	Chum	38	0.5	0	0	0	0	0	0	0	0	0	0	0	0	0	0	0	0
24-Mar-21	BS1	Chum	35	0.4	0	0	0	0	0	0	0	0	0	0	0	0	0	0	0	0
24-Mar-21	BS1	Chum	38	0.5	0	0	0	0	0	0	0	0	0	0	0	0	0	0	0	0
24-Mar-21	BS1	Chum	37	0.5	0	0	0	0	0	0	0	0	0	0	0	0	0	0	0	0
24-Mar-21	BS1	Chum	41	0.7	0	0	0	0	0	0	0	0	0	0	0	0	0	0	0	0
24-Mar-21	BS2	Chum	41	0.8	0	0	0	0	0	0	0	0	0	0	0	0	0	0	0	0
24-Mar-21	BS2	Chum	37	0.4	0	0	0	0	0	0	0	0	0	0	0	0	0	0	0	0
24-Mar-21	BS2	Chum	37	0.5	0	0	0	0	0	0	0	0	0	0	0	0	0	0	0	0
24-Mar-21	BS2	Chum	41	0.7	0	2	0	0	0	0	0	0	0	0	0	0	0	0	0	0
24-Mar-21	BS2	Chum	41	0.7	0	0	0	0	0	0	0	0	0	0	0	0	0	0	0	0
24-Mar-21	BS2	Chum	46	1.0	0	0	0	0	0	0	0	0	0	0	0	0	0	0	0	0
24-Mar-21	BS2	Chum	45	0.9	0	0	0	0	0	0	0	0	0	0	0	0	0	0	0	0
24-Mar-21	BS2	Chum	37	0.5	0	0	0	0	0	0	0	0	0	0	0	0	0	0	0	0
24-Mar-21	BS2	Chum	45	1.0	0	1	0	0	0	0	0	0	0	0	0	0	0	0	0	0
24-Mar-21	BS2	Chum	40	0.7	0	0	0	0	0	0	0	0	0	0	0	0	0	0	0	0
24-Mar-21	BS2	Chum	48	1.2	0	0	0	0	0	0	0	0	0	0	0	0	0	0	0	0
24-Mar-21	BS2	Chum	39	0.5	0	0	0	0	0	0	0	0	0	0	0	0	0	0	0	0
24-Mar-21	BS2	Chum	40	0.7	0	0	0	0	0	0	0	0	0	0	0	0	0	0	0	0
24-Mar-21	BS2	Chum	38	0.5	0	0	0	0	0	0	0	0	0	0	0	0	0	0	0	0
24-Mar-21	BS2	Chum	37	0.5	0	0	0	0	0	0	0	0	0	0	0	0	0	0	0	0
24-Mar-21	BS3	Chum	38	0.5	0	0	0	0	0	0	0	0	0	0	0	0	0	0	0	0
24-Mar-21	BS3	Chum	45	1.0	0	0	0	0	0	0	0	0	0	0	0	0	0	0	0	0
24-Mar-21	BS3	Chum	42	0.7	0	0	0	0	0	0	0	0	0	0	0	0	0	0	0	0
24-Mar-21	BS3	Chum	38	0.5	0	0	0	0	0	0	0	0	0	0	0	0	0	0	0	0
24-Mar-21	BS3	Chum	39	0.7	1	0	0	0	0	0	0	0	0	0	0	0	0	0	0	0
24-Mar-21	BS3	Chum	37	0.5	0	0	0	0	0	0	0	0	0	0	0	0	0	0	0	0
24-Mar-21	BS3	Chum	36	0.5	0	0	0	0	0	0	0	0	0	0	0	0	0	0	0	0
24-Mar-21	BS3	Chum	38	0.5	0	0	0	0	0	0	0	0	0	0	0	0	0	0	0	0
24-Mar-21	BS3	Chum	37	0.5	0	0	0	0	0	0	0	0	0	0	0	0	0	0	0	0
24-Mar-21	BS3	Chum	35	0.4	0	0	0	0	0	0	0	0	0	0	0	0	0	0	0	0
24-Mar-21	BS3	Chum	35	0.5	0	0	0	0	0	0	0	0	0	0	0	0	0	0	0	0

DATE COLLECTED	SITE	FISH SPECIES	LENGTH IN MM	WEIGHT IN G	LEP Co	LEP C1	LEP C2	LEP PAM	LEP PAF	LEP AM	LEP AF	CAL Co	CAL C1	CAL C2	CAL C3	CAL C4	CAL PAM	CAL_PAF	CAL AM	CAL AF
24-Mar-21	BS3	Chum	41	0.8	0	0	1	0	0	0	0	0	0	0	0	0	0	0	0	0
24-Mar-21	BS3	Chum	39	0.5	0	0	0	0	0	0	0	0	0	0	0	0	0	0	0	0
24-Mar-21	BS3	Chum	41	0.7	0	0	0	0	0	0	0	0	0	0	0	0	0	0	0	0
24-Mar-21	BS3	Chum	38	0.6	0	0	0	0	0	0	0	0	0	0	0	0	0	0	0	0
24-Mar-21	BS4	Chum	39	0.4	0	0	0	0	0	0	0	0	0	0	0	0	0	0	0	0
24-Mar-21	BS4	Chum	40	0.6	0	0	0	0	0	0	0	0	0	0	0	0	0	0	0	0
24-Mar-21	BS4	Chum	35	0.4	0	0	0	0	0	0	0	0	0	0	0	0	0	0	0	0
24-Mar-21	BS4	Chum	36	0.3	0	0	0	0	0	0	0	0	0	0	0	0	0	0	0	0
24-Mar-21	BS4	Chum	34	0.4	0	0	0	0	0	0	0	0	0	0	0	0	0	0	0	0
24-Mar-21	BS4	Chum	36	0.5	0	0	0	0	0	0	0	0	0	0	0	0	0	0	0	0
24-Mar-21	BS4	Chum	35	0.3	0	0	0	0	0	0	0	0	0	0	0	0	0	0	0	0
24-Mar-21	BS4	Chum	37	0.4	0	0	0	0	0	0	0	0	0	0	0	0	0	0	0	0
24-Mar-21	BS4	Chum	35	0.4	0	0	0	0	0	0	0	0	0	0	0	0	0	0	0	0
24-Mar-21	BS4	Chum	41	0.7	0	0	0	0	0	0	0	0	0	0	0	0	0	0	0	0
24-Mar-21	BS5	Chum	37	0.4	0	0	0	0	0	0	0	0	0	0	0	0	0	0	0	0
24-Mar-21	BS5	Chum	36	0.4	0	0	0	0	0	0	0	0	0	0	0	0	0	0	0	0
24-Mar-21	BS5	Chum	37	0.5	0	0	0	0	0	0	0	0	0	0	0	0	0	0	0	0
24-Mar-21	BS5	Chum	36	0.4	0	0	0	0	0	0	0	0	0	0	0	0	0	0	0	0
24-Mar-21	BS5	Chum	38	0.5	0	0	0	0	0	0	0	0	0	0	0	0	0	0	0	0
24-Mar-21	BS5	Chum	36	0.5	0	0	0	0	0	0	0	0	0	0	0	0	0	0	0	0
24-Mar-21	BS5	Chum	37	0.3	0	0	0	0	0	0	0	0	0	0	0	0	0	0	0	0
24-Mar-21	BS5	Chum	36	0.4	0	0	0	0	0	0	0	0	0	0	0	0	0	0	0	0
24-Mar-21	BS5	Chum	37	0.4	1	0	0	0	0	0	0	0	0	0	0	0	0	0	0	0
24-Mar-21	BS5	Chum	38	0.4	0	0	0	0	0	0	0	0	0	0	0	0	0	0	0	0
24-Mar-21	BS5	Chum	38	0.5	0	0	0	0	0	0	0	0	0	0	0	0	0	0	0	0
24-Mar-21	BS5	Chum	39	0.5	0	0	0	0	0	0	0	0	0	0	0	0	0	0	0	0
24-Mar-21	BS5	Chum	38	0.5	0	0	0	0	0	0	0	0	0	0	0	0	0	0	0	0
24-Mar-21	BS5	Chum	36	0.4	0	0	0	0	0	0	0	0	0	0	0	0	0	0	0	0
24-Mar-21	BS5	Chum	39	0.5	0	0	0	0	0	0	0	0	0	0	0	0	0	0	0	0
24-Mar-21	BS6	Chum	38	0.5	1	0	0	0	0	0	0	0	0	0	0	0	0	0	0	0
24-Mar-21	BS6	Chum	38	0.4	0	0	0	0	0	0	0	0	0	0	0	0	0	0	0	0
24-Mar-21	BS6	Chum	43	0.7	0	0	0	0	0	0	0	0	0	0	0	0	0	0	0	0
24-Mar-21	BS6	Chum	43	0.7	0	0	0	0	0	0	0	0	0	0	0	0	0	0	0	0
24-Mar-21	BS6	Chum	39	0.5	0	0	0	0	0	0	0	0	0	0	0	0	0	0	0	0
24-Mar-21	BS6	Chum	40	0.6	0	0	0	0	0	0	0	0	0	0	0	0	0	0	0	0
24-Mar-21	BS6	Chum	39	0.6	0	0	0	0	0	0	0	0	0	0	0	0	0	0	0	0
24-Mar-21	BS6	Chum	40	0.5	0	0	0	0	0	0	0	0	0	0	0	0	0	0	0	0
24-Mar-21	BS6	Chum	38	0.4	0	0	0	0	0	0	0	0	0	0	0	0	0	0	0	0
24-Mar-21	BS6	Chum	36	0.4	0	0	0	0	0	0	0	0	0	0	0	0	0	0	0	0
24-Mar-21	BS6	Chum	35	0.4	0	0	0	0	0	0	0	0	0	0	0	0	0	0	0	0
24-Mar-21	BS6	Chum	37	0.5	0	0	0	0	0	0	0	0	0	0	0	0	0	0	0	0
24-Mar-21	BS6	Chum	38	0.4	0	0	0	0	0	0	0	0	0	0	0	0	0	0	0	0
24-Mar-21	BS6	Chum	38	0.5	0	0	0	0	0	0	0	0	0	0	0	0	0	0	0	0
24-Mar-21	BS6	Chum	37	0.5	1	0	0	0	0	0	0	0	0	0	0	0	0	0	0	0

DATE COLLECTED	SITE	FISH SPECIES	LENGTH IN MM	WEIGHT IN G	LEP Co	LEP C1	LEP C2	LEP PAM	LEP PAF	LEP AM	LEP AF	CAL Co	CAL C1	CAL C2	CAL C3	CAL C4	CAL PAM	CAL_PAF	CAL AM	CAL AF
24-Mar-21	FC2	Chum	36	0.4	0	0	0	0	0	0	0	0	0	0	0	0	0	0	0	0
24-Mar-21	FC2	Chum	36	0.3	0	0	0	0	0	0	0	0	0	0	0	0	0	0	0	0
24-Mar-21	FC2	Chum	35	0.4	0	0	0	0	0	0	0	0	0	0	0	0	0	0	0	0
24-Mar-21	FC2	Chum	35	0.4	0	0	0	0	0	0	0	0	0	0	0	0	0	0	0	0
24-Mar-21	FC2	Chum	37	0.4	0	0	0	0	0	0	0	0	0	0	0	0	0	0	0	0
24-Mar-21	FC2	Chum	41	0.7	0	0	0	0	0	0	0	0	0	0	0	0	0	0	0	0
24-Mar-21	FC2	Chum	37	0.5	0	0	0	0	0	0	0	0	0	0	0	0	0	0	0	0
24-Mar-21	FC2	Chum	35	0.4	0	0	0	0	0	0	0	0	0	0	0	0	0	0	0	0
24-Mar-21	FC2	Chum	39	0.5	0	0	0	0	0	0	0	0	0	0	0	0	0	0	0	0
24-Mar-21	FC2	Chum	38	0.5	0	0	0	0	0	0	0	0	0	0	0	0	0	0	0	0
24-Mar-21	FC2	Chum	37	0.4	0	0	0	0	0	0	0	0	0	0	0	0	0	0	0	0
24-Mar-21	FC2	Chum	40	0.6	0	0	0	0	0	0	0	0	0	0	0	0	0	0	0	0
24-Mar-21	FC2	Chum	41	0.7	0	0	0	0	0	0	0	0	0	0	0	0	0	0	0	0
24-Mar-21	FC2	Chum	37	0.6	0	0	0	0	0	0	0	0	0	0	0	0	0	0	0	0
24-Mar-21	FC2	Chum	36	0.5	0	0	0	0	0	0	0	0	0	0	0	0	0	0	0	0
24-Mar-21	FC3	Chum	34	0.4	0	0	0	0	0	0	0	0	0	0	0	0	0	0	0	0
24-Mar-21	FC3	Chum	36	0.5	0	0	0	0	0	0	0	0	0	0	0	0	0	0	0	0
24-Mar-21	FC3	Chum	37	0.5	0	0	0	0	0	0	0	0	0	0	0	0	0	0	0	0
24-Mar-21	FC3	Chum	36	0.4	0	0	0	0	0	0	0	0	0	0	0	0	0	0	0	0
24-Mar-21	FC3	Chum	36	0.4	0	0	0	0	0	0	0	0	0	0	0	0	0	0	0	0
24-Mar-21	FC3	Chum	39	0.5	0	0	0	0	0	0	0	0	0	0	0	0	0	0	0	0
24-Mar-21	FC3	Chum	39	0.5	0	0	0	0	0	0	0	0	0	0	0	0	0	0	0	0
24-Mar-21	FC3	Chum	37	0.5	0	0	0	0	0	0	0	0	0	0	0	0	0	0	0	0
24-Mar-21	FC3	Chum	37	0.5	0	0	0	0	0	0	0	0	0	0	0	0	0	0	0	0
24-Mar-21	FC3	Chum	37	0.5	0	0	0	0	0	0	0	0	0	0	0	0	0	0	0	0
24-Mar-21	FC3	Chum	38	0.5	0	0	0	0	0	0	0	0	0	0	0	0	0	0	0	0
24-Mar-21	FC3	Chum	34	0.5	0	0	0	0	0	0	0	0	0	0	0	0	0	0	0	0
24-Mar-21	FC3	Chum	38	0.5	0	0	0	0	0	0	0	0	0	0	0	0	0	0	0	0
24-Mar-21	FC3	Chum	38	0.5	1	0	0	0	0	0	0	0	0	0	0	0	0	0	0	0
24-Mar-21	FC3	Chum	38	0.6	0	0	0	0	0	0	0	0	0	0	0	0	0	0	0	0
24-Mar-21	FC4	Chum	36	0.3	0	0	0	0	0	0	0	0	0	0	0	0	0	0	0	0
24-Mar-21	FC4	Chum	36	0.5	0	0	0	0	0	0	0	0	0	0	0	0	0	0	0	0
24-Mar-21	FC5	Chum	40	0.6	0	0	0	0	0	0	0	0	0	0	0	0	0	0	0	0
24-Mar-21	FC5	Chum	37	0.4	0	0	0	0	0	0	0	0	0	0	0	0	0	0	0	0
24-Mar-21	FC5	Chum	47	1.0	0	0	0	0	0	0	0	0	0	0	0	0	0	0	0	0
24-Mar-21	FC5	Chum	35	0.4	0	0	0	0	0	0	0	0	0	0	0	0	0	0	0	0
24-Mar-21	FC5	Chum	39	0.6	0	0	0	0	0	0	0	0	0	0	0	0	0	0	0	0
24-Mar-21	FC5	Chum	45	0.8	0	0	0	0	0	0	0	0	0	0	0	0	0	0	0	0
24-Mar-21	FC5	Chum	45	0.9	0	1	0	0	0	0	0	0	0	0	0	0	0	0	0	0
24-Mar-21	FC5	Chum	49	1.2	0	1	0	0	0	0	0	0	0	0	0	0	0	0	0	0
24-Mar-21	FC5	Chum	40	0.7	0	1	0	0	0	0	0	0	0	0	0	0	0	0	0	0
24-Mar-21	FC5	Chum	36	0.4	0	0	0	0	0	0	0	0	0	0	0	0	0	0	0	0
24-Mar-21	FC5	Chum	39	0.6	0	0	0	0	0	0	0	0	0	0	0	0	0	0	0	0
24-Mar-21	FC5	Chum	49	1.4	0	0	0	0	0	0	0	0	0	0	0	0	0	0	0	0

DATE COLLECTED	SITE	FISH SPECIES	LENGTH IN MM	WEIGHT IN G	LEP Co	LEP C1	LEP C2	LEP PAM	LEP PAF	LEP AM	LEP AF	CAL Co	CAL C1	CAL C2	CAL C3	CAL C4	CAL PAM	CAL_PAF	CAL AM	CAL AF
24-Mar-21	FC5	Chum	35	0.4	0	0	0	0	0	0	0	0	0	0	0	0	0	0	0	0
24-Mar-21	FC5	Chum	35	0.3	0	0	0	0	0	0	0	0	0	0	0	0	0	0	0	0
24-Mar-21	FC5	Chum	39	0.6	0	0	0	0	0	0	0	0	0	0	0	0	0	0	0	0
24-Mar-21	FC5	TSB	50	1.6	0	0	0	0	0	0	0	0	0	0	0	0	0	0	0	0
25-Mar-21	HI1	Chum	36	0.4	0	0	0	0	0	0	0	0	0	0	0	0	0	0	0	0
25-Mar-21	HI1	Chum	39	0.6	0	0	0	0	0	0	0	0	0	0	0	0	0	0	0	0
25-Mar-21	HI1	Chum	36	0.5	0	0	0	0	0	0	0	0	0	0	0	0	0	0	0	0
25-Mar-21	HI1	Chum	38	0.5	0	0	0	0	0	0	0	0	0	0	0	0	0	0	0	0
25-Mar-21	HI1	Chum	39	0.6	0	0	0	0	0	0	0	0	0	0	0	0	0	0	0	0
25-Mar-21	HI1	Chum	37	0.4	0	0	0	0	0	0	0	0	0	0	0	0	0	0	0	0
25-Mar-21	HI1	Chum	38	0.4	0	0	0	0	0	0	0	0	0	0	0	0	0	0	0	0
25-Mar-21	HI1	Chum	37	0.5	0	0	0	0	0	0	0	0	0	0	0	0	0	0	0	0
25-Mar-21	HI1	Chum	39	0.5	0	0	0	0	0	0	0	0	0	0	0	0	0	0	0	0
25-Mar-21	HI1	Chum	40	0.5	0	0	0	0	0	0	0	0	0	0	0	0	0	0	0	0
25-Mar-21	HI1	Chum	36	0.5	0	0	0	0	0	0	0	0	0	0	0	0	0	0	0	0
25-Mar-21	HI1	Chum	37	0.5	0	0	0	0	0	0	0	0	0	0	0	0	0	0	0	0
25-Mar-21	HI1	Chum	36	0.4	0	0	0	0	0	0	0	0	0	0	0	0	0	0	0	0
25-Mar-21	HI1	Chum	40	0.7	0	0	0	0	0	0	0	0	0	0	0	0	0	0	0	0
25-Mar-21	HI1	Chum	39	0.6	0	0	0	0	0	0	0	0	0	0	0	0	0	0	0	0
25-Mar-21	HI2	Chum	39	0.5	0	0	0	0	0	0	0	0	0	0	0	0	0	0	0	0
25-Mar-21	MC3	Chum	42	0.6	0	0	0	0	0	0	0	0	0	0	0	0	0	0	0	0
25-Mar-21	MC3	Chum	38	0.5	0	0	0	0	0	0	0	0	0	0	0	0	0	0	0	0
25-Mar-21	MC3	Chum	39	0.5	0	1	0	0	0	0	0	0	0	0	0	0	0	0	0	0
25-Mar-21	MC3	Chum	37	0.5	0	0	0	0	0	0	0	0	0	0	0	0	0	0	0	0
25-Mar-21	MC3	Chum	39	0.5	0	0	0	0	0	0	0	0	0	0	0	0	0	0	0	0
25-Mar-21	MC3	Chum	40	0.7	0	4	0	0	0	0	0	0	0	0	0	0	0	0	0	0
25-Mar-21	MC3	Chum	40	0.6	0	0	0	0	0	0	0	0	0	0	0	0	0	0	0	0
25-Mar-21	MC3	Chum	39	0.5	1	0	0	0	0	0	0	0	0	0	0	0	0	0	0	0
25-Mar-21	MC3	Chum	39	0.5	0	0	0	0	0	0	0	0	0	0	0	0	0	0	0	0
25-Mar-21	MC3	Chum	37	0.5	0	0	0	0	0	0	0	0	0	0	0	0	0	0	0	0
25-Mar-21	MC3	Chum	39	0.5	0	0	0	0	0	0	0	0	0	0	0	0	0	0	0	0
25-Mar-21	MC3	Chum	40	0.7	0	0	0	0	0	0	0	0	0	0	0	0	0	0	0	0
25-Mar-21	MC3	Chum	40	0.6	0	0	0	0	0	0	0	0	0	0	0	0	0	0	0	0
25-Mar-21	SI1	Chum	39	0.4	0	0	0	0	0	0	0	0	0	0	0	0	0	0	0	0
25-Mar-21	SI1	Chum	37	0.5	0	0	0	0	0	0	0	0	0	0	0	0	0	0	0	0
25-Mar-21	SI1	Chum	40	0.6	0	0	0	0	0	0	0	0	0	0	0	0	0	0	0	0
25-Mar-21	SI1	Chum	39	0.5	0	0	0	0	0	0	0	0	0	0	0	0	0	0	0	0
25-Mar-21	SI1	Chum	39	0.4	0	0	0	0	0	0	0	0	0	0	0	0	0	0	0	0
25-Mar-21	SI1	Chum	39	0.6	0	0	0	0	0	0	0	0	0	0	0	0	0	0	0	0
25-Mar-21	SI1	Chum	38	0.5	0	0	0	0	0	0	0	0	0	0	0	0	0	0	0	0
25-Mar-21	SI1	Chum	37	0.5	0	0	0	0	0	0	0	0	0	0	0	0	0	0	0	0
25-Mar-21	SI1	Chum	37	0.5	0	0	0	0	0	0	0	0	0	0	0	0	0	0	0	0
25-Mar-21	SI1	Chum	38	0.5	0	0	0	0	0	0	0	0	0	0	0	0	0	0	0	0
25-Mar-21	SI1	Chum	40	0.7	0	0	0	0	0	0	0	0	0	0	0	0	0	0	0	0

DATE COLLECTED	SITE	FISH SPECIES	LENGTH IN MM	WEIGHT IN G	LEP Co	LEP C1	LEP C2	LEP PAM	LEP PAF	LEP AM	LEP AF	CAL Co	CAL C1	CAL C2	CAL C3	CAL C4	CAL PAM	CAL_PAF	CAL AM	CAL AF
25-Mar-21	SI1	Chum	39	0.5	0	0	0	0	0	0	0	0	0	0	0	0	0	0	0	0
25-Mar-21	SI1	Chum	37	0.4	0	0	0	0	0	0	0	0	0	0	0	0	0	0	0	0
25-Mar-21	SI1	Chum	37	0.5	0	0	0	0	0	0	0	0	0	0	0	0	0	0	0	0
25-Mar-21	SI1	Chum	40	0.5	0	0	0	0	0	0	0	0	0	0	0	0	0	0	0	0
25-Mar-21	SI3	Coho	37	0.5	0	0	0	0	0	0	0	0	0	0	0	0	0	0	0	0
25-Mar-21	SI3	Chum	40	0.6	0	0	0	0	0	0	0	0	0	0	0	0	0	0	0	0
25-Mar-21	SI3	Chum	37	0.4	0	0	0	0	0	0	0	0	0	0	0	0	0	0	0	0
07-Apr-21	BS6	Chum	38	0.5	0	0	0	0	0	0	0	0	0	0	0	0	0	0	0	0
07-Apr-21	BS6	Chum	38	0.4	1	0	0	0	0	0	0	0	0	0	0	0	0	0	0	0
07-Apr-21	BS6	Chum	37	0.4	0	0	0	0	0	0	0	0	0	0	0	0	0	0	0	0
07-Apr-21	BS6	Chum	40	0.5	0	0	0	0	0	0	0	0	0	0	0	0	0	0	0	0
07-Apr-21	BS6	Chum	39	0.6	0	0	0	0	0	0	0	0	0	0	0	0	0	0	0	0
07-Apr-21	BS6	Chum	37	0.4	0	0	0	0	0	0	0	0	0	0	0	0	0	0	0	0
07-Apr-21	BS6	Chum	40	0.7	1	0	0	0	0	0	0	0	0	0	0	0	0	0	0	0
07-Apr-21	BS6	Chum	39	0.5	0	0	0	0	0	0	0	0	0	0	0	0	0	0	0	0
07-Apr-21	BS6	Chum	39	0.5	0	0	0	0	0	0	0	0	0	0	0	0	0	0	0	0
07-Apr-21	BS6	Chum	39	0.5	0	0	0	0	0	0	0	0	0	0	0	0	0	0	0	0
07-Apr-21	BS6	Chum	38	0.5	0	0	0	0	0	0	0	0	0	0	0	0	0	0	0	0
07-Apr-21	BS6	Chum	38	0.4	0	0	0	0	0	0	0	0	0	0	0	0	0	0	0	0
07-Apr-21	BS6	Chum	38	0.5	0	0	0	0	0	0	0	0	0	0	0	0	0	0	0	0
07-Apr-21	BS6	Chum	37	0.4	0	0	0	0	0	0	0	0	0	0	0	0	0	0	0	0
07-Apr-21	BS6	Chum	38	0.5	0	0	0	0	0	0	0	0	0	0	0	0	0	0	0	0
07-Apr-21	FC2	Chum	38	0.6	0	0	0	0	0	0	0	0	0	0	0	0	0	0	0	0
07-Apr-21	FC2	Chum	44	0.9	0	0	0	0	0	0	0	0	0	0	0	0	0	0	0	0
07-Apr-21	FC2	Chum	44	0.8	0	0	0	0	0	0	0	0	0	0	0	0	0	0	0	0
07-Apr-21	FC2	Chum	44	0.8	0	0	0	0	0	0	0	0	0	0	0	0	0	0	0	0
07-Apr-21	FC2	Chum	40	0.6	0	0	0	0	0	0	0	0	0	0	0	0	0	0	0	0
07-Apr-21	FC2	Chum	37	0.5	0	0	0	0	0	0	0	0	0	0	0	0	0	0	0	0
07-Apr-21	FC2	Chum	45	0.9	0	0	0	0	0	0	0	0	0	0	0	0	0	0	0	0
07-Apr-21	FC2	Chum	41	0.8	0	0	0	0	0	0	0	0	0	0	0	0	0	0	0	0
07-Apr-21	FC2	Chum	46	1.0	0	0	0	0	0	0	0	0	0	0	0	0	0	0	0	0
07-Apr-21	FC2	Chum	40	0.6	0	0	0	0	0	0	0	0	0	0	0	0	0	0	0	0
07-Apr-21	FC2	Chum	43	0.7	0	0	0	0	0	0	0	0	0	0	0	0	0	0	0	0
07-Apr-21	FC2	Chum	42	0.7	0	0	0	0	0	0	0	0	0	0	0	0	0	0	0	0
07-Apr-21	FC2	Chum	41	0.6	1	0	0	0	0	0	0	0	0	0	0	0	0	0	0	0
07-Apr-21	FC2	Chum	38	0.5	0	1	0	0	0	0	0	0	0	0	0	0	0	0	0	0
07-Apr-21	FC2	Chum	40	0.6	0	0	0	0	0	0	0	0	0	0	0	0	0	0	0	0
07-Apr-21	FC4	Chum	36	0.4	0	0	0	0	0	0	0	0	0	0	0	0	0	0	0	0
07-Apr-21	FC4	Chum	37	0.4	0	0	0	0	0	0	0	0	0	0	0	0	0	0	0	0
07-Apr-21	FC4	Chum	41	0.7	0	1	0	0	0	0	0	0	0	0	0	0	0	0	0	0
07-Apr-21	FC4	Chum	38	0.5	0	0	0	0	0	0	0	0	0	0	0	0	0	0	0	0
07-Apr-21	FC4	Chum	41	0.7	0	0	0	0	0	0	0	0	0	0	0	0	0	0	0	0
07-Apr-21	FC4	Chum	40	0.6	0	0	0	0	0	0	0	0	0	0	0	0	0	0	0	0
07-Apr-21	FC4	Chum	39	0.5	0	0	0	0	0	0	0	0	0	0	0	0	0	0	0	0

DATE COLLECTED	SITE	FISH SPECIES	LENGTH IN MM	WEIGHT IN G	LEP Co	LEP C1	LEP C2	LEP PAM	LEP PAF	LEP AM	LEP AF	CAL Co	CAL C1	CAL C2	CAL C3	CAL C4	CAL PAM	CAL_PAF	CAL AM	CAL AF
07-Apr-21	FC4	Chum	38	0.4	0	0	0	0	0	0	0	0	0	0	0	0	0	0	0	0
07-Apr-21	FC4	Chum	36	0.4	0	0	0	0	0	0	0	0	0	0	0	0	0	0	0	0
07-Apr-21	FC4	Chum	37	0.4	0	0	0	0	0	0	0	0	0	0	0	0	0	0	0	0
07-Apr-21	FC4	Chum	37	0.4	0	0	0	0	0	0	0	0	0	0	0	0	0	0	0	0
07-Apr-21	FC4	Chum	35	0.3	0	0	0	0	0	0	0	0	0	0	0	0	0	0	0	0
07-Apr-21	FC4	Chum	38	0.5	0	0	0	0	0	0	0	0	0	0	0	0	0	0	0	0
07-Apr-21	FC4	Chum	39	0.5	0	0	0	0	0	0	0	0	0	0	0	0	0	0	0	0
07-Apr-21	BS4	Chum	40	0.5	0	0	0	0	0	0	0	0	0	0	0	0	0	0	0	0
07-Apr-21	BS4	Chum	35	0.3	0	0	0	0	0	0	0	0	0	0	0	0	0	0	0	0
07-Apr-21	BS4	Chum	39	0.6	0	0	0	0	0	0	0	0	0	0	0	0	0	0	0	0
07-Apr-21	BS4	Chum	37	0.5	0	0	0	0	0	0	0	0	0	0	0	0	0	0	0	0
07-Apr-21	BS4	Chum	38	0.5	0	0	0	0	0	0	0	0	0	0	0	0	0	0	0	0
07-Apr-21	BS4	Chum	39	0.6	0	0	0	0	0	0	0	0	0	0	0	0	0	0	0	0
07-Apr-21	BS4	Chum	37	0.5	0	0	0	0	0	0	0	0	0	0	0	0	0	0	0	0
07-Apr-21	BS4	Chum	42	0.7	0	1	0	0	0	0	0	0	0	0	0	0	0	0	0	0
07-Apr-21	BS4	Chum	39	0.5	0	0	0	0	0	0	0	0	0	0	0	0	0	0	0	0
07-Apr-21	BS4	Chum	36	0.4	0	0	0	0	0	0	0	0	0	0	0	0	0	0	0	0
07-Apr-21	BS4	Chum	40	0.5	0	0	0	0	0	0	0	0	0	0	0	0	0	0	0	0
07-Apr-21	BS4	Chum	40	0.6	0	0	0	0	0	0	0	0	0	0	0	0	0	0	0	0
07-Apr-21	BS4	Chum	39	0.5	0	0	0	0	0	0	0	0	0	0	0	0	0	0	0	0
07-Apr-21	BS4	Chum	38	0.4	0	0	0	0	0	0	0	0	0	0	0	0	0	0	0	0
07-Apr-21	BS4	Chum	39	0.5	0	0	0	0	0	0	0	0	0	0	0	0	0	0	0	0
07-Apr-21	BS1	Chum	34	0.5	0	0	0	0	0	0	0	0	0	0	0	0	0	0	0	0
07-Apr-21	BS1	Chum	39	0.5	0	0	0	0	0	0	0	0	0	0	0	0	0	0	0	0
07-Apr-21	BS1	Chum	38	0.5	0	0	0	0	0	0	0	0	0	0	0	0	0	0	0	0
07-Apr-21	BS1	Chum	35	0.4	0	1	0	0	0	0	0	0	0	0	0	0	0	0	0	0
07-Apr-21	BS1	Chum	45	0.8	0	1	0	0	0	0	0	0	0	0	0	0	0	0	0	0
07-Apr-21	BS1	Chum	40	0.4	0	0	0	0	0	0	0	1	0	0	0	0	0	0	0	0
07-Apr-21	BS1	Chum	39	0.6	0	0	0	0	0	0	0	0	0	0	0	0	0	0	0	0
07-Apr-21	BS1	Chum	38	0.5	0	0	0	0	0	0	0	0	0	0	0	0	0	0	0	0
07-Apr-21	BS1	Chum	38	0.5	1	1	0	0	0	0	0	0	0	0	0	0	0	0	0	0
07-Apr-21	BS1	Chum	38	0.6	0	0	0	0	0	0	0	0	0	0	0	0	0	0	0	0
07-Apr-21	BS1	Chum	39	0.7	0	1	0	0	0	0	0	0	0	0	0	0	0	0	0	0
07-Apr-21	BS1	Chum	41	0.8	0	1	0	0	0	0	0	0	0	0	0	0	0	0	0	0
07-Apr-21	BS1	Chum	50	1.1	0	2	1	1	0	0	0	0	0	0	0	0	0	0	0	0
07-Apr-21	BS1	Chum	45	1.0	0	0	0	0	0	0	0	0	0	0	0	0	0	0	0	0
07-Apr-21	BS1	Chum	40	0.7	0	0	0	0	0	0	0	0	0	0	0	0	0	0	0	0
07-Apr-21	BS1	Chum	42	0.6	0	0	0	0	0	0	0	0	0	0	0	0	0	0	0	0
07-Apr-21	BS5	Chum	37	0.4	0	0	0	0	0	0	0	0	0	0	0	0	0	0	0	0
07-Apr-21	BS5	Chum	39	0.6	0	0	0	0	0	0	0	0	0	0	0	0	0	0	0	0
07-Apr-21	BS5	Chum	37	0.5	0	0	0	0	0	0	0	0	0	0	0	0	0	0	0	0
07-Apr-21	BS5	Chum	38	0.5	0	0	0	0	0	0	0	0	0	0	0	0	0	0	0	0
07-Apr-21	BS5	Chum	37	0.5	0	0	0	0	0	0	0	0	0	0	0	0	0	0	0	0
07-Apr-21	BS5	Chum	38	0.5	0	0	0	0	0	0	0	0	0	0	0	0	0	0	0	0

DATE COLLECTED	SITE	FISH SPECIES	LENGTH IN MM	WEIGHT IN G	LEP Co	LEP C1	LEP C2	LEP PAM	LEP PAF	LEP AM	LEP AF	CAL Co	CAL C1	CAL C2	CAL C3	CAL C4	CAL PAM	CAL_PAF	CAL AM	CAL AF
07-Apr-21	BS5	Chum	37	0.5	0	0	0	0	0	0	0	0	0	0	0	0	0	0	0	0
07-Apr-21	BS5	Chum	36	0.5	0	0	0	0	0	0	0	0	0	0	0	0	0	0	0	0
07-Apr-21	BS5	Chum	38	0.5	0	0	0	0	0	0	0	0	0	0	0	0	0	0	0	0
07-Apr-21	BS5	Chum	38	0.5	0	0	0	0	0	0	0	0	0	0	0	0	0	0	0	0
07-Apr-21	BS5	Chum	39	0.6	0	0	0	0	0	0	0	0	0	0	0	0	0	0	0	0
07-Apr-21	BS5	Chum	37	0.5	0	0	0	0	0	0	0	0	0	0	0	0	0	0	0	0
07-Apr-21	BS5	Chum	37	0.4	0	0	0	0	0	0	0	0	0	0	0	0	0	0	0	0
07-Apr-21	BS5	Chum	38	0.5	0	0	0	0	0	0	0	0	0	0	0	0	0	0	0	0
07-Apr-21	BS5	Chum	36	0.4	0	0	0	0	0	0	0	0	0	0	0	0	0	0	0	0
07-Apr-21	BS3	Chum	37	0.4	0	0	0	0	0	0	0	0	0	0	0	0	0	0	0	0
07-Apr-21	BS3	Chum	38	0.5	0	0	0	0	0	0	0	0	0	0	0	0	0	0	0	0
07-Apr-21	BS3	Chum	38	0.4	1	0	0	0	0	0	0	0	0	0	0	0	0	0	0	0
07-Apr-21	BS3	Chum	43	0.7	0	0	0	0	0	0	0	0	0	0	0	0	0	0	0	0
07-Apr-21	BS3	Chum	39	0.5	0	0	0	0	0	0	0	0	0	0	0	0	0	0	0	0
07-Apr-21	BS3	Chum	40	0.5	0	0	0	0	0	0	0	0	0	0	0	0	0	0	0	0
07-Apr-21	BS3	Chum	37	0.4	1	0	0	0	0	0	0	0	0	0	0	0	0	0	0	0
07-Apr-21	BS3	Chum	39	0.5	0	0	0	0	0	0	0	0	0	0	0	0	0	0	0	0
07-Apr-21	BS3	Chum	38	0.3	0	0	0	0	0	0	0	0	0	0	0	0	0	0	0	0
07-Apr-21	BS3	Chum	48	1.1	0	1	1	0	0	0	0	0	0	0	0	0	0	0	0	0
07-Apr-21	BS3	Chum	43	0.7	0	0	0	0	0	0	0	0	0	0	0	0	0	0	0	0
07-Apr-21	BS3	Chum	39	0.5	0	0	0	0	0	0	0	0	0	0	0	0	0	0	0	0
07-Apr-21	BS3	Chum	39	0.5	0	0	0	0	0	0	0	0	0	0	0	0	0	0	0	0
07-Apr-21	BS3	Chum	46	0.9	0	0	0	0	0	0	0	0	0	0	0	0	0	0	0	0
07-Apr-21	BS3	Chum	39	0.5	0	0	0	0	0	0	0	0	0	0	0	0	0	0	0	0
07-Apr-21	BS3	Coho	90	9.0	0	0	0	0	0	0	0	0	0	0	0	0	0	0	0	0
07-Apr-21	BS3	Coho	106	13.9	0	0	0	0	0	0	0	0	0	0	0	0	0	0	0	0
07-Apr-21	BS3	Coho	97	10.1	0	0	0	0	0	0	0	0	0	0	0	0	0	0	0	0
07-Apr-21	FC5	Chum	50	1.1	0	0	0	0	0	0	0	0	0	0	0	0	0	0	0	0
07-Apr-21	FC5	Chum	40	0.7	1	1	0	0	0	0	0	0	0	0	0	0	0	0	0	0
07-Apr-21	FC5	Chum	46	1.0	0	0	0	0	0	0	0	0	0	0	0	0	1	0	0	0
07-Apr-21	FC5	Chum	44	0.8	0	0	0	0	0	0	0	0	0	0	0	0	0	0	0	0
07-Apr-21	FC5	Chum	41	0.5	0	0	0	0	0	0	0	0	0	0	0	0	0	0	0	0
07-Apr-21	FC5	Chum	39	0.4	0	0	0	0	0	0	0	0	0	0	0	0	0	0	0	0
07-Apr-21	FC5	Chum	46	0.9	0	0	0	0	0	0	0	0	0	0	0	0	1	0	0	0
07-Apr-21	FC5	Chum	45	1.1	0	0	0	0	0	0	0	0	0	0	0	0	0	0	0	0
07-Apr-21	FC5	Chum	46	0.8	1	0	0	0	0	0	0	0	0	0	0	0	0	0	0	0
07-Apr-21	FC5	Chum	38	0.4	0	0	0	0	0	0	0	0	0	0	0	0	0	0	0	0
07-Apr-21	FC5	Chum	44	0.8	0	0	0	0	0	0	0	0	0	0	0	0	1	0	0	0
07-Apr-21	FC5	Chum	38	0.4	0	0	0	0	0	0	0	0	0	0	0	0	0	0	0	0
07-Apr-21	FC5	Chum	48	1.1	2	0	0	0	0	0	0	0	0	0	0	0	0	0	0	0
07-Apr-21	FC5	Chum	44	0.9	0	0	0	0	0	0	0	0	0	0	0	0	0	0	0	0
07-Apr-21	FC5	Chum	43	0.8	0	0	0	0	0	0	0	0	0	0	0	0	0	0	0	0
07-Apr-21	FC3	Chum	40	0.7	0	0	0	0	0	0	0	0	0	0	0	0	0	0	0	0
07-Apr-21	FC3	Chum	40	0.6	0	0	0	0	0	0	0	0	0	0	0	0	0	0	0	0

DATE COLLECTED	SITE	FISH SPECIES	LENGTH IN MM	WEIGHT IN G	LEP Co	LEP C1	LEP C2	LEP PAM	LEP PAF	LEP AM	LEP AF	CAL Co	CAL C1	CAL C2	CAL C3	CAL C4	CAL PAM	CAL_PAF	CAL AM	CAL AF
07-Apr-21	FC3	Chum	53	1.5	0	0	0	0	0	1	0	0	0	0	0	0	0	0	0	0
07-Apr-21	FC3	Chum	40	0.6	0	0	0	0	0	0	0	0	0	0	0	0	0	0	0	0
07-Apr-21	FC3	Chum	37	0.5	0	0	0	0	0	0	0	0	0	0	0	0	0	0	0	0
07-Apr-21	FC3	Chum	36	0.4	0	0	0	0	0	0	0	0	0	0	0	0	0	0	0	0
07-Apr-21	FC3	Chum	37	0.5	2	0	0	0	0	0	0	0	0	0	0	0	0	0	0	0
07-Apr-21	FC3	Chum	38	0.5	0	0	0	0	0	0	0	0	0	0	0	0	0	0	0	0
07-Apr-21	FC3	Chum	40	0.6	0	0	1	0	0	0	0	0	0	0	0	0	0	0	0	0
07-Apr-21	FC3	Chum	38	0.6	0	0	0	0	0	0	0	0	0	0	0	0	0	0	0	0
07-Apr-21	FC3	Chum	36	0.4	0	0	0	0	0	0	0	0	0	0	0	0	0	0	0	0
07-Apr-21	FC3	Chum	38	0.5	0	0	0	0	0	0	0	0	0	0	0	0	0	0	0	0
07-Apr-21	FC3	Chum	38	0.5	0	0	0	0	0	0	0	0	0	0	0	0	0	0	0	0
07-Apr-21	FC3	Chum	38	0.5	0	0	0	0	0	0	0	0	0	0	0	0	0	0	0	0
07-Apr-21	FC3	Chum	37	0.4	0	0	0	0	0	0	0	0	0	0	0	0	0	0	0	0
08-Apr-21	SD1	Chum	37	0.4	0	0	0	0	0	0	0	0	0	0	0	0	0	0	0	0
08-Apr-21	HI2	Chum	39	0.5	0	0	0	0	0	0	0	0	0	0	0	0	0	0	0	0
08-Apr-21	HI2	Chum	40	0.5	0	0	0	0	0	0	0	0	0	0	0	0	0	0	0	0
08-Apr-21	HI2	Chum	41	0.6	0	0	0	0	0	0	0	0	0	0	0	0	0	0	0	0
08-Apr-21	HI2	Chum	40	0.6	0	0	0	0	0	0	0	0	0	0	0	0	0	0	0	0
08-Apr-21	HI2	Chum	39	0.5	0	0	0	0	0	0	0	0	0	0	0	0	0	0	0	0
08-Apr-21	HI2	Chum	39	0.6	0	0	0	0	0	0	0	0	0	0	0	0	0	0	0	0
08-Apr-21	HI2	Chum	40	0.8	0	0	0	0	0	0	0	0	0	0	0	0	0	0	0	0
08-Apr-21	HI2	Chum	38	0.6	0	0	0	0	0	0	0	0	0	0	0	0	0	0	0	0
08-Apr-21	HI2	Chum	40	0.7	0	0	0	0	0	0	0	0	0	0	0	0	0	0	0	0
08-Apr-21	HI2	Chum	36	0.4	0	0	0	0	0	0	0	0	0	0	0	0	0	0	0	0
08-Apr-21	HI2	Chum	42	0.7	0	0	0	0	0	0	0	0	0	0	0	0	0	0	0	0
08-Apr-21	HI2	Chum	39	0.5	0	0	0	0	0	0	0	0	0	0	0	0	0	0	0	0
08-Apr-21	HI2	Chum	37	0.5	0	0	0	0	0	0	0	0	0	0	0	0	0	0	0	0
08-Apr-21	HI2	Chum	38	0.5	0	0	0	0	0	0	0	0	0	0	0	0	0	0	0	0
08-Apr-21	HI2	Chum	42	0.7	0	0	0	0	0	0	0	0	0	0	0	0	0	0	0	0
08-Apr-21	SI2	Chum	40	0.5	0	0	0	0	0	0	0	0	0	0	0	0	0	0	0	0
08-Apr-21	SI2	Chum	38	0.4	0	0	0	0	0	0	0	0	0	0	0	0	0	0	0	0
08-Apr-21	SI2	Chum	39	0.5	0	0	0	0	0	0	0	0	0	0	0	0	0	0	0	0
08-Apr-21	SI2	Chum	38	0.4	0	0	0	0	0	0	0	0	0	0	0	0	0	0	0	0
08-Apr-21	SI2	Chum	35	0.3	0	0	0	0	0	0	0	0	0	0	0	0	0	0	0	0
08-Apr-21	SI2	Chum	40	0.5	0	0	0	0	0	0	0	0	0	0	0	0	0	0	0	0
08-Apr-21	SI2	Chum	38	0.5	0	0	0	0	0	0	0	0	0	0	0	0	0	0	0	0
08-Apr-21	SI2	Chum	39	0.5	0	0	0	0	0	0	0	0	0	0	0	0	0	0	0	0
08-Apr-21	SI2	Chum	38	0.5	0	0	0	0	0	0	0	0	0	0	0	0	0	0	0	0
08-Apr-21	SI2	Chum	41	0.7	0	0	0	0	0	0	0	0	0	0	0	0	0	0	0	0
08-Apr-21	SI2	Chum	36	0.4	0	0	0	0	0	0	0	0	0	0	0	0	0	0	0	0
08-Apr-21	SI2	Chum	36	0.4	0	0	0	0	0	0	0	0	0	0	0	0	0	0	0	0
08-Apr-21	SI2	Chum	36	0.4	0	0	0	0	0	0	0	0	0	0	0	0	0	0	0	0
08-Apr-21	SI2	Chum	37	0.6	0	0	0	0	0	0	0	0	0	0	0	0	0	0	0	0
08-Apr-21	SI2	Chum	39	0.5	0	0	0	0	0	0	0	0	0	0	0	0	0	0	0	0

DATE COLLECTED	SITE	FISH SPECIES	LENGTH IN MM	WEIGHT IN G	LEP Co	LEP C1	LEP C2	LEP PAM	LEP PAF	LEP AM	LEP AF	CAL Co	CAL C1	CAL C2	CAL C3	CAL C4	CAL PAM	CAL_PAF	CAL AM	CAL AF
08-Apr-21	MC1	Chum	38	0.6	0	0	0	0	0	0	0	0	0	0	0	0	0	0	0	0
08-Apr-21	MC1	Chum	40	0.5	0	0	0	0	0	0	0	0	0	0	0	0	0	0	0	0
08-Apr-21	MC1	Chum	37	0.5	0	0	0	0	0	0	0	0	0	0	0	0	0	0	0	0
08-Apr-21	MC1	Chum	38	0.5	0	0	0	0	0	0	0	0	0	0	0	0	0	0	0	0
08-Apr-21	MC1	Chum	50	1.2	0	0	0	0	0	0	0	0	0	0	0	0	0	0	0	0
08-Apr-21	MC1	Chum	55	1.9	0	0	0	0	0	0	0	0	0	0	0	0	0	0	0	0
08-Apr-21	MC1	Chum	37	0.5	0	0	0	0	0	0	0	0	0	0	0	0	0	0	0	0
08-Apr-21	MC1	Chum	42	0.9	0	0	0	0	0	0	0	0	0	0	0	0	0	0	0	0
08-Apr-21	MC1	Chum	39	0.5	0	0	0	0	0	0	0	0	0	0	0	0	0	0	0	0
08-Apr-21	MC1	Chum	38	0.6	0	0	0	0	0	0	0	0	0	0	0	0	0	0	0	0
08-Apr-21	MC1	Chum	60	2.5	0	0	0	0	0	0	0	0	0	0	0	0	0	0	0	0
08-Apr-21	MC1	Chum	55	1.8	0	0	0	0	0	0	0	0	0	0	0	0	0	0	0	0
08-Apr-21	MC1	Chum	45	1.0	0	1	0	0	0	0	0	0	0	0	0	0	0	0	0	0
08-Apr-21	MC1	Chum	43	0.8	0	0	0	1	0	0	0	0	0	0	0	0	0	0	0	0
08-Apr-21	MC1	Chum	55	1.8	0	0	0	0	0	0	0	0	0	0	0	0	0	0	0	0
08-Apr-21	HI1	Chum	38	0.4	0	0	0	0	0	0	0	0	0	0	0	0	0	0	0	0
08-Apr-21	HI1	Chum	40	0.4	0	0	0	0	0	0	0	0	0	0	0	0	0	0	0	0
08-Apr-21	HI1	Chum	40	0.5	0	0	0	0	0	0	0	0	0	0	0	0	0	0	0	0
08-Apr-21	HI1	Chum	40	0.6	0	0	0	0	0	0	0	0	0	0	0	0	0	0	0	0
08-Apr-21	HI1	Chum	40	0.5	0	0	0	0	0	0	0	0	0	0	0	0	0	0	0	0
08-Apr-21	HI1	Chum	40	0.5	0	0	0	0	0	0	0	0	0	0	0	0	0	0	0	0
08-Apr-21	HI1	Chum	38	0.4	0	0	0	0	0	0	0	0	0	0	0	0	0	0	0	0
08-Apr-21	HI1	Chum	40	0.6	0	0	0	0	0	0	0	0	0	0	0	0	0	0	0	0
08-Apr-21	HI1	Chum	38	0.4	0	0	0	0	0	0	0	0	0	0	0	0	0	0	0	0
08-Apr-21	HI1	Chum	38	0.4	0	0	0	0	0	0	0	0	0	0	0	0	0	0	0	0
08-Apr-21	HI1	Chum	40	0.5	0	0	0	0	0	0	0	0	0	0	0	0	0	0	0	0
08-Apr-21	HI1	Chum	38	0.5	0	0	0	0	0	0	0	0	0	0	0	0	0	0	0	0
08-Apr-21	HI1	Chum	38	0.4	0	0	0	0	0	0	0	0	0	0	0	0	0	0	0	0
08-Apr-21	HI1	Chum	38	0.4	0	0	0	0	0	0	0	0	0	0	0	0	0	0	0	0
08-Apr-21	HI1	Chum	39	0.5	0	0	0	0	0	0	0	0	0	0	0	0	0	0	0	0
08-Apr-21	SI1	Chum	42	0.7	0	0	0	0	0	0	0	0	0	0	0	0	1	0	0	0
08-Apr-21	SI1	Chum	37	0.4	0	0	0	0	0	0	0	0	0	0	0	0	0	0	0	0
08-Apr-21	SI1	Chum	45	1.0	0	1	0	0	0	0	0	0	0	0	0	0	0	0	0	0
08-Apr-21	SI1	Chum	40	0.6	0	1	0	0	0	0	0	0	0	0	0	0	0	0	0	0
08-Apr-21	SI1	Chum	44	0.9	0	0	0	0	0	0	0	0	0	0	0	0	0	0	0	0
08-Apr-21	SI1	Chum	43	0.8	0	0	0	0	0	0	0	0	0	0	0	0	0	0	0	0
08-Apr-21	SI1	Chum	46	1.0	0	0	1	0	0	0	0	0	0	0	0	0	0	0	0	0
08-Apr-21	SI1	Chum	38	0.5	0	0	0	0	0	0	0	0	0	0	0	0	0	0	0	0
08-Apr-21	SI1	Chum	42	0.6	0	0	0	0	0	0	0	0	0	0	0	0	0	0	0	0
08-Apr-21	SI1	Chum	39	0.5	0	0	0	0	0	0	0	0	0	0	0	0	0	0	0	0
08-Apr-21	SI1	Chum	40	0.7	0	1	0	0	0	0	0	0	0	0	0	0	0	0	0	0
08-Apr-21	SI1	Chum	40	0.6	0	1	0	0	0	0	0	0	0	0	0	0	0	0	0	0
08-Apr-21	SI1	Chum	38	0.5	0	0	0	0	0	0	0	0	0	0	0	0	0	0	0	0
08-Apr-21	SI1	Chum	39	0.5	0	0	0	0	0	0	0	0	0	0	0	0	0	0	0	0

DATE COLLECTED	SITE	FISH SPECIES	LENGTH IN MM	WEIGHT IN G	LEP Co	LEP C1	LEP C2	LEP PAM	LEP PAF	LEP AM	LEP AF	CAL Co	CAL C1	CAL C2	CAL C3	CAL C4	CAL PAM	CAL_PAF	CAL AM	CAL AF
08-Apr-21	SI1	Chum	39	0.5	0	0	0	0	0	0	0	0	0	0	0	0	0	0	0	0
08-Apr-21	MC3	Chum	37	0.5	0	0	0	0	0	0	0	0	0	0	0	0	0	0	0	0
08-Apr-21	MC3	Chum	45	1.0	0	1	0	0	0	0	0	0	0	0	0	0	0	0	0	0
08-Apr-21	MC3	Chum	40	0.6	0	0	0	0	0	0	0	0	0	0	0	0	0	0	0	0
08-Apr-21	MC3	Chum	38	0.6	0	1	0	0	0	0	0	0	0	0	0	0	0	0	0	0
08-Apr-21	MC3	Chum	46	1.1	0	0	1	0	0	0	0	0	0	0	0	0	0	0	0	0
08-Apr-21	MC3	Chum	40	0.8	0	0	0	0	0	0	0	0	0	0	0	0	0	0	0	0
08-Apr-21	MC3	Chum	38	0.5	0	0	0	0	0	0	0	0	0	0	0	0	0	0	0	0
08-Apr-21	MC3	Chum	42	0.8	0	1	0	0	0	0	0	0	0	0	0	0	0	0	0	0
08-Apr-21	MC3	Chum	41	0.8	0	0	0	0	0	0	0	0	0	0	0	0	0	0	0	0
08-Apr-21	MC3	Chum	45	1.1	0	0	0	0	0	0	0	0	0	0	0	0	0	0	0	0
08-Apr-21	MC3	Chum	42	0.9	0	0	0	0	0	0	0	0	0	0	0	0	0	0	0	0
08-Apr-21	MC3	Chum	44	1.1	0	0	1	0	0	0	0	0	0	0	0	0	0	0	0	0
08-Apr-21	MC3	Chum	49	1.3	0	2	0	0	0	0	0	0	0	0	0	0	0	0	0	0
08-Apr-21	MC3	Chum	46	1.1	0	1	0	0	0	0	0	0	0	0	0	0	0	0	0	0
08-Apr-21	MC3	Chum	43	1.1	0	0	0	0	0	0	0	0	0	0	0	0	0	0	0	0
08-Apr-21	SI3	Chum	41	0.5	0	0	0	0	0	0	0	0	0	0	0	0	0	0	0	0
08-Apr-21	SI3	Chum	44	0.6	0	0	0	0	0	0	0	0	0	0	0	0	0	0	0	0
08-Apr-21	SI3	Chum	44	0.7	0	0	0	0	0	0	0	0	0	0	0	0	0	0	0	0
08-Apr-21	SI3	Chum	50	1.2	0	0	0	0	0	0	0	0	0	0	0	0	0	0	0	0
08-Apr-21	SI3	Chum	39	0.4	0	0	0	0	0	0	0	0	0	0	0	0	0	0	0	0
08-Apr-21	SI3	Chum	55	1.6	0	0	0	0	0	0	0	0	0	0	0	0	0	0	0	0
08-Apr-21	SI3	Chum	40	0.4	0	0	0	0	0	0	0	0	0	0	0	0	0	0	0	0
08-Apr-21	SI3	Coho	73	4.2	0	0	0	0	0	0	0	0	0	0	0	0	0	0	0	0
08-Apr-21	SI3	Coho	84	5.8	0	0	0	0	0	0	0	0	0	0	0	0	0	0	0	0
08-Apr-21	SI3	Coho	98	9.7	0	0	0	0	0	0	0	0	0	0	0	0	0	0	0	0
08-Apr-21	SI3	Coho	70	3.7	0	0	0	0	0	0	0	0	0	0	0	0	0	0	0	0
08-Apr-21	SI3	Coho	81	5.6	0	0	0	0	0	0	0	0	0	0	0	0	0	0	0	0
21-Apr-21	BS3	Chum	48	0.4	0	0	0	0	0	0	0	0	0	0	0	0	0	0	0	0
21-Apr-21	BS3	Chum	38	0.4	0	0	0	0	0	0	0	0	0	0	0	0	0	0	0	0
21-Apr-21	BS3	Chum	39	0.6	0	0	0	0	0	0	0	0	0	0	0	0	0	0	0	0
21-Apr-21	BS3	Chum	43	0.6	1	0	0	0	0	0	0	0	0	0	0	0	0	0	0	0
21-Apr-21	BS3	Chum	38	0.5	0	0	0	0	0	0	0	0	0	0	0	0	0	0	0	0
21-Apr-21	BS3	Chum	45	1.0	1	0	0	0	0	0	0	0	0	0	0	0	0	0	0	0
21-Apr-21	BS3	Chum	37	0.4	0	0	0	0	0	0	0	0	0	0	0	0	0	0	0	0
21-Apr-21	BS3	Chum	39	0.5	1	0	0	0	0	0	0	0	0	0	0	0	0	0	0	0
21-Apr-21	BS3	Chum	40	0.5	0	0	0	0	0	0	0	0	0	0	0	0	0	0	0	0
21-Apr-21	BS3	Chum	40	0.5	0	0	0	0	0	0	0	0	0	0	0	0	0	0	0	0
21-Apr-21	BS3	Chum	44	0.9	0	0	0	0	0	0	0	0	0	0	0	0	0	0	0	0
21-Apr-21	BS3	Chum	40	0.6	0	0	0	0	0	0	0	0	0	0	0	0	0	0	0	0
21-Apr-21	BS3	Chum	40	0.7	1	0	0	0	0	0	0	0	0	0	0	0	0	0	0	0
21-Apr-21	BS3	Chum	38	0.5	0	0	0	0	0	0	0	0	0	0	0	0	0	0	0	0
21-Apr-21	BS3	Chum	42	0.7	0	0	0	0	0	0	0	0	0	0	0	0	0	0	0	0
21-Apr-21	FC3	Chum	39	0.5	1	0	0	0	0	0	0	0	0	0	0	0	0	0	0	0

DATE COLLECTED	SITE	FISH SPECIES	LENGTH IN MM	WEIGHT IN G	LEP Co	LEP C1	LEP C2	LEP PAM	LEP PAF	LEP AM	LEP AF	CAL Co	CAL C1	CAL C2	CAL C3	CAL C4	CAL PAM	CAL_PAF	CAL AM	CAL AF
21-Apr-21	FC3	Chum	42	0.8	2	0	2	0	0	0	0	0	0	0	0	0	0	0	0	0
21-Apr-21	FC3	Chum	43	0.8	3	0	0	0	0	0	0	0	0	0	0	0	0	0	0	0
21-Apr-21	FC3	Chum	35	0.4	0	0	0	0	0	0	0	0	0	0	0	0	0	0	0	0
21-Apr-21	FC3	Chum	52	1.5	0	0	2	0	1	0	0	0	0	0	0	0	0	0	0	0
21-Apr-21	FC3	Chum	48	1.1	0	0	1	1	0	0	0	0	0	0	0	0	0	0	0	0
21-Apr-21	FC3	Chum	48	1.1	0	0	3	0	0	0	0	0	0	0	0	0	0	0	0	0
21-Apr-21	FC3	Chum	40	0.7	0	0	0	0	0	0	0	0	0	0	0	0	0	0	0	0
21-Apr-21	FC3	Chum	47	1.2	0	0	1	0	0	0	0	0	0	0	0	0	0	0	0	0
21-Apr-21	FC3	Chum	42	0.8	1	0	1	0	0	0	0	0	0	0	0	0	0	0	0	0
21-Apr-21	FC3	Chum	46	1.0	0	0	0	0	0	0	0	0	0	0	0	0	0	0	0	0
21-Apr-21	FC3	Chum	43	0.9	0	0	0	0	0	0	0	0	0	0	0	0	0	0	0	0
21-Apr-21	FC3	Chum	40	0.7	0	0	0	0	0	0	0	0	0	0	0	0	0	0	0	0
21-Apr-21	FC3	Chum	40	0.7	0	0	0	0	0	0	0	0	0	0	0	0	0	0	0	0
21-Apr-21	FC3	Chum	35	0.5	1	0	0	0	0	0	0	0	0	0	0	0	0	0	0	0
21-Apr-21	BS4	Chum	39	0.5	0	0	0	0	0	0	0	0	0	0	0	0	0	0	0	0
21-Apr-21	BS4	Chum	38	0.5	0	0	0	0	0	0	0	0	0	0	0	0	0	0	0	0
21-Apr-21	BS4	Chum	39	0.5	0	0	0	0	0	0	0	0	0	0	0	0	0	0	0	0
21-Apr-21	BS4	Chum	38	0.5	0	0	0	0	0	0	0	0	0	0	0	0	0	0	0	0
21-Apr-21	BS4	Chum	35	0.4	0	0	0	0	0	0	0	0	0	0	0	0	0	0	0	0
21-Apr-21	BS4	Chum	38	0.5	0	0	0	0	0	0	0	0	0	0	0	0	0	0	0	0
21-Apr-21	BS4	Chum	41	0.7	0	0	0	0	0	0	0	0	0	0	0	0	0	0	0	0
21-Apr-21	BS4	Chum	40	0.6	0	0	0	0	0	0	0	0	0	0	0	0	0	0	0	0
21-Apr-21	BS4	Chum	43	0.7	0	1	0	0	0	0	0	0	0	0	0	0	0	0	0	0
21-Apr-21	BS4	Chum	36	0.5	0	0	0	0	0	0	0	0	0	0	0	0	0	0	0	0
21-Apr-21	BS4	Chum	50	1.3	0	0	0	0	0	0	0	0	0	0	0	0	0	0	0	0
21-Apr-21	BS4	Chum	38	0.5	0	0	0	0	0	0	0	0	0	0	0	0	0	0	0	0
21-Apr-21	BS4	Chum	37	0.4	0	0	0	0	0	0	0	0	0	0	0	0	0	0	0	0
21-Apr-21	BS4	Chum	35	0.4	0	0	0	0	0	0	0	0	0	0	0	0	0	0	0	0
21-Apr-21	BS4	Chum	43	0.8	0	0	0	0	0	0	0	0	0	0	0	0	0	0	0	0
21-Apr-21	BS1	Chum	37	0.5	0	0	0	0	0	0	0	1	0	0	0	0	0	0	0	0
21-Apr-21	FC5	Chum	34	0.4	0	0	0	0	0	0	0	0	0	0	0	0	0	0	0	0
21-Apr-21	FC5	Chum	34	0.4	0	0	0	0	0	0	0	0	0	0	0	0	0	0	0	0
21-Apr-21	FC5	Chum	50	1.5	0	0	0	0	0	0	0	0	0	0	0	0	0	0	0	0
21-Apr-21	FC5	Chum	35	0.5	0	0	0	0	0	0	0	0	0	0	0	0	0	0	0	0
21-Apr-21	FC5	Chum	49	1.3	0	0	0	0	0	0	0	0	0	0	0	0	0	0	0	0
21-Apr-21	FC5	Chum	42	0.9	0	0	0	0	0	0	0	0	0	0	0	0	0	0	0	0
21-Apr-21	FC5	Chum	45	1.1	0	0	0	0	0	0	0	0	0	0	0	0	0	0	0	0
21-Apr-21	FC5	Chum	48	1.4	0	0	0	0	0	0	0	0	0	0	0	0	0	0	0	0
21-Apr-21	FC5	Chum	46	1.3	0	0	0	0	0	0	0	0	0	0	0	0	0	0	0	0
21-Apr-21	FC5	Chum	38	0.8	0	0	0	0	0	0	0	0	0	0	0	0	0	0	0	0
21-Apr-21	FC5	Chum	42	0.9	0	0	0	0	0	0	0	0	0	0	0	0	0	0	0	0
21-Apr-21	FC5	Chum	35	0.4	0	0	0	0	0	0	0	0	0	0	0	0	0	0	0	0
21-Apr-21	FC5	Chum	54	1.8	0	0	2	0	0	0	0	0	0	0	0	0	0	0	0	0
21-Apr-21	FC5	Chum	51	1.5	0	0	0	0	0	0	0	0	0	0	0	0	0	0	0	0

DATE COLLECTED	SITE	FISH SPECIES	LENGTH IN MM	WEIGHT IN G	LEP Co	LEP C1	LEP C2	LEP PAM	LEP PAF	LEP AM	LEP AF	CAL Co	CAL C1	CAL C2	CAL C3	CAL C4	CAL PAM	CAL_PAF	CAL AM	CAL AF
21-Apr-21	FC5	Chum	36	0.5	0	0	0	0	0	0	0	0	0	0	0	0	0	0	0	0
21-Apr-21	BS2	Chum	52	1.7	0	0	0	0	0	0	0	0	0	0	1	0	0	0	0	0
21-Apr-21	BS2	Chum	64	3.5	0	0	1	0	0	0	0	0	0	0	0	0	0	0	0	0
21-Apr-21	BS2	Chum	58	2.2	0	0	0	0	0	0	0	0	0	0	0	0	0	0	0	0
21-Apr-21	BS2	Chum	51	1.9	2	0	0	0	0	0	0	0	0	0	0	0	0	0	0	0
21-Apr-21	BS2	Chum	62	2.8	0	0	1	0	0	0	0	0	0	0	0	0	0	0	0	0
21-Apr-21	BS2	Chum	72	4.8	0	0	1	0	0	0	0	0	0	0	1	0	0	0	0	0
21-Apr-21	BS2	Chum	58	2.8	0	0	3	0	0	0	0	0	0	0	0	0	0	0	0	0
21-Apr-21	BS2	Chum	65	3.9	0	0	1	0	0	0	0	0	0	0	0	0	0	0	0	0
21-Apr-21	BS2	Chum	65	3.2	0	0	0	0	0	0	0	0	0	0	0	0	0	0	0	0
21-Apr-21	BS6	Chum	45	0.8	0	0	0	0	0	0	0	0	0	0	0	0	0	0	0	0
21-Apr-21	BS6	Chum	44	0.8	0	1	0	0	1	0	0	0	0	0	0	0	0	0	0	0
21-Apr-21	BS6	Chum	40	0.6	0	0	0	0	0	0	0	0	0	0	0	0	0	0	0	0
21-Apr-21	BS6	Chum	46	0.9	0	0	0	0	0	0	0	0	0	0	0	0	0	0	0	0
21-Apr-21	BS6	Chum	39	0.6	0	0	0	0	0	0	0	0	0	0	0	0	0	0	0	0
21-Apr-21	BS6	Chum	40	0.7	0	1	0	0	0	0	0	0	0	0	0	0	0	0	0	0
21-Apr-21	BS6	Chum	41	0.7	1	0	0	0	0	0	0	0	0	0	0	0	0	0	0	0
21-Apr-21	BS6	Chum	38	0.7	0	1	0	0	0	0	0	0	0	0	0	0	0	0	0	0
21-Apr-21	BS6	Chum	40	0.6	1	0	0	0	0	0	0	0	0	0	0	0	0	0	0	0
21-Apr-21	BS6	Chum	42	0.6	1	0	0	0	0	0	0	0	0	0	0	0	0	0	0	0
21-Apr-21	BS6	Chum	55	2.2	2	0	0	0	0	0	0	0	0	0	0	0	0	0	0	0
21-Apr-21	BS6	Chum	37	0.3	0	0	0	0	0	0	0	0	0	0	0	0	0	0	0	0
21-Apr-21	FC4	Chum	40	0.6	0	0	0	0	0	0	0	0	0	0	0	0	0	0	0	0
21-Apr-21	FC4	Chum	45	1.0	0	0	0	0	0	0	0	0	0	0	0	0	0	0	0	0
21-Apr-21	FC4	Chum	51	1.1	0	0	0	0	0	0	0	0	0	0	0	0	0	0	0	0
21-Apr-21	FC4	Chum	48	1.0	0	0	0	0	0	0	0	0	0	0	0	0	0	0	0	1
21-Apr-21	FC4	Chum	47	1.1	0	0	0	0	0	0	0	0	0	0	0	0	0	0	0	0
21-Apr-21	FC4	Chum	48	1.1	0	0	0	0	0	0	0	0	0	0	0	0	0	0	0	0
21-Apr-21	FC4	Chum	53	1.4	0	0	0	0	0	0	0	0	0	0	0	0	0	0	0	0
21-Apr-21	FC4	Chum	56	1.0	0	0	0	0	0	0	0	0	0	0	0	0	0	0	0	0
21-Apr-21	FC4	Chum	48	1.1	0	0	0	0	0	0	0	0	0	0	0	0	0	0	0	0
21-Apr-21	FC4	Chum	45	0.9	0	0	1	0	0	0	0	0	0	0	0	0	0	0	0	0
21-Apr-21	FC4	Chum	40	0.6	0	0	0	0	0	0	0	0	0	0	0	0	0	0	0	0
21-Apr-21	FC4	Chum	37	0.5	0	0	0	0	0	0	0	0	0	0	0	0	0	0	0	0
21-Apr-21	FC4	Chum	38	0.5	0	0	0	0	0	0	0	0	0	0	0	0	0	0	0	0
21-Apr-21	FC4	Chum	44	0.9	1	0	0	0	0	0	0	0	0	0	0	0	0	0	0	0
21-Apr-21	FC4	Chum	46	1.0	0	0	0	0	0	0	0	0	0	0	0	0	0	0	0	0
21-Apr-21	FC2	Chum	46	1.0	0	0	0	0	0	0	0	0	0	0	0	0	0	0	0	0
21-Apr-21	FC2	Chum	57	1.7	0	0	0	0	0	0	0	0	0	0	0	0	0	0	0	0
21-Apr-21	FC2	Chum	54	1.5	1	0	0	0	0	0	0	0	0	0	0	0	0	0	0	0
21-Apr-21	FC2	Chum	50	1.3	0	0	1	0	0	0	0	0	0	0	0	0	0	0	0	0
21-Apr-21	FC2	Chum	48	1.1	0	0	0	0	1	0	0	0	0	0	0	0	0	0	0	0
21-Apr-21	FC2	Chum	53	1.4	0	0	0	0	0	0	0	0	0	0	0	0	0	0	0	0
21-Apr-21	FC2	Chum	52	1.3	0	0	1	0	0	0	0	0	0	0	0	0	0	0	0	0

DATE COLLECTED	SITE	FISH SPECIES	LENGTH IN MM	WEIGHT IN G	LEP Co	LEP C1	LEP C2	LEP PAM	LEP PAF	LEP AM	LEP AF	CAL Co	CAL C1	CAL C2	CAL C3	CAL C4	CAL PAM	CAL_PAF	CAL AM	CAL AF
21-Apr-21	FC2	Chum	56	1.9	0	0	1	0	0	0	0	0	0	0	0	0	0	0	0	0
21-Apr-21	FC2	Chum	46	1.2	0	0	0	0	0	0	0	0	0	0	0	0	0	0	0	0
21-Apr-21	FC2	Chum	53	1.5	0	0	1	1	0	0	0	0	0	0	0	0	0	0	0	0
21-Apr-21	FC2	Chum	54	1.5	1	0	0	0	0	0	0	0	0	0	0	0	0	0	0	0
21-Apr-21	FC2	Chum	50	1.4	0	0	1	0	0	0	0	0	0	0	0	0	0	0	0	0
21-Apr-21	FC2	Chum	53	1.4	0	0	0	0	1	0	0	0	0	0	0	0	0	0	0	0
21-Apr-21	FC2	Chum	54	1.5	0	0	0	0	0	0	0	0	0	0	0	0	0	0	0	0
21-Apr-21	FC2	Chum	50	1.2	0	0	0	0	0	0	0	0	0	0	0	0	0	0	0	0
21-Apr-21	FC2	TSB	58	1.5	0	0	0	0	0	0	0	0	0	0	0	0	0	0	0	0
21-Apr-21	BS5	Chum	36	0.3	0	0	0	0	0	0	0	0	0	0	0	0	0	0	0	0
21-Apr-21	BS5	Chum	39	0.6	0	0	0	0	0	0	0	0	0	0	0	0	0	0	0	0
21-Apr-21	BS5	Chum	37	0.3	0	0	0	0	0	0	0	0	0	0	0	0	0	0	0	0
21-Apr-21	BS5	Chum	40	0.5	0	0	0	0	0	0	0	0	0	0	0	0	0	0	0	0
21-Apr-21	BS5	Chum	39	0.5	0	0	0	0	0	0	0	0	0	0	0	0	0	0	0	0
21-Apr-21	BS5	Chum	39	0.5	0	0	0	0	0	0	0	0	0	0	0	0	0	0	0	0
21-Apr-21	BS5	Chum	39	0.4	0	0	0	0	0	0	0	0	0	0	0	0	0	0	0	0
21-Apr-21	BS5	Chum	39	0.5	0	0	0	0	0	0	0	0	0	0	0	0	0	0	0	0
21-Apr-21	BS5	Chum	43	0.7	0	0	0	0	0	0	0	0	0	0	0	0	0	0	0	0
21-Apr-21	BS5	Chum	39	0.5	0	0	0	0	0	0	0	0	0	0	0	0	0	0	0	0
21-Apr-21	BS5	Chum	39	0.5	0	0	0	0	0	0	0	0	0	0	0	0	0	0	0	0
21-Apr-21	BS5	Chum	37	0.5	0	0	0	0	0	0	0	0	0	0	0	0	0	0	0	0
21-Apr-21	BS5	Chum	37	0.4	0	0	0	0	0	0	0	0	0	0	0	0	0	0	0	0
21-Apr-21	BS5	Chum	38	0.5	0	0	0	0	0	0	0	0	0	0	0	0	0	0	0	0
21-Apr-21	BS5	Chum	39	0.5	0	0	0	0	0	0	0	0	0	0	0	0	0	0	0	0
22-Apr-21	SD1	Chum	37	0.5	0	0	0	0	0	0	0	0	0	0	0	0	0	0	0	0
22-Apr-21	SD1	Chum	39	0.5	0	0	0	0	0	0	0	0	0	0	0	0	0	0	0	0
22-Apr-21	HI2	Chum	35	0.4	0	0	0	0	0	0	0	0	0	0	0	0	0	0	0	0
22-Apr-21	MC1	Chum	43	0.6	0	0	0	0	0	0	0	0	0	0	0	0	0	0	0	0
22-Apr-21	MC1	Chum	42	0.8	0	0	0	0	0	0	0	0	0	0	0	0	0	0	0	0
22-Apr-21	MC1	Chum	39	0.7	0	0	0	0	0	0	0	0	0	0	0	0	0	0	0	0
22-Apr-21	MC1	Chum	37	0.6	0	0	0	0	0	0	0	0	0	0	0	0	0	0	0	0
22-Apr-21	MC1	Chum	37	0.5	0	0	0	0	0	0	0	0	0	0	0	0	0	0	0	0
22-Apr-21	MC1	Chum	38	0.6	0	0	0	0	0	0	0	0	0	0	0	0	0	0	0	0
22-Apr-21	MC1	Chum	40	0.8	0	0	0	0	0	0	0	0	0	0	0	0	0	0	0	0
22-Apr-21	MC1	Chum	39	0.6	0	0	0	0	0	0	0	0	0	0	0	0	0	0	0	0
22-Apr-21	MC1	Chum	38	0.5	0	0	0	0	0	0	0	0	0	0	0	0	0	0	0	0
22-Apr-21	MC1	Chum	40	0.7	0	0	0	0	0	0	0	0	0	0	0	0	0	0	0	0
22-Apr-21	MC1	Chum	42	0.8	0	0	0	0	0	0	0	0	0	0	0	0	0	0	0	0
22-Apr-21	MC1	Chum	36	0.5	0	0	1	0	0	0	0	0	0	0	0	0	0	0	0	0
22-Apr-21	MC1	Chum	37	0.5	0	0	0	0	0	0	0	0	0	0	0	0	0	0	0	0
22-Apr-21	MC1	Chum	37	0.6	0	0	0	0	0	0	0	0	0	0	0	0	0	0	0	0
22-Apr-21	MC1	Chum	37	0.6	0	0	0	0	0	0	0	0	0	0	0	0	0	0	0	0
22-Apr-21	SI2	Chum	41	0.6	0	0	0	0	0	0	0	0	0	0	0	0	0	0	0	0
22-Apr-21	SI2	Chum	43	0.7	0	0	0	0	0	0	0	0	0	0	0	0	0	0	0	0

DATE COLLECTED	SITE	FISH SPECIES	LENGTH IN MM	WEIGHT IN G	LEP Co	LEP C1	LEP C2	LEP PAM	LEP PAF	LEP AM	LEP AF	CAL Co	CAL C1	CAL C2	CAL C3	CAL C4	CAL PAM	CAL_PAF	CAL AM	CAL AF
22-Apr-21	SI2	Chum	40	0.6	0	0	0	0	0	0	0	0	0	0	0	0	0	0	0	0
22-Apr-21	SI2	Chum	40	0.5	0	0	0	0	0	0	0	0	0	0	0	0	0	0	0	0
22-Apr-21	SI2	Chum	44	0.7	3	0	0	0	0	0	0	0	0	0	0	0	0	0	0	0
22-Apr-21	SI2	Chum	41	0.6	0	0	0	0	0	0	0	0	0	0	0	0	0	0	0	0
22-Apr-21	SI2	Chum	43	0.7	0	0	0	0	0	0	0	0	0	0	0	0	0	0	0	0
22-Apr-21	SI2	Chum	39	0.6	0	0	0	0	0	0	0	0	0	0	0	0	0	0	0	0
22-Apr-21	SI2	Chum	39	0.7	0	0	0	0	0	0	0	0	0	0	0	0	0	0	0	0
22-Apr-21	SI2	Chum	40	0.5	0	0	0	0	0	0	0	0	0	0	0	0	0	0	0	0
22-Apr-21	SI2	Chum	45	0.9	1	0	0	0	0	0	0	0	0	0	0	0	0	0	0	0
22-Apr-21	SI2	Chum	46	0.9	0	0	0	0	0	0	0	0	0	0	0	0	0	0	0	0
22-Apr-21	SI2	Chum	39	0.6	0	0	0	0	0	0	0	0	0	0	0	0	0	0	0	0
22-Apr-21	SI2	Chum	38	0.5	0	0	0	0	0	0	0	0	0	0	0	0	0	0	0	0
22-Apr-21	SI2	Chum	45	1.0	0	0	0	0	0	0	0	0	0	0	0	0	0	0	0	0
22-Apr-21	SI2	Coho	91	10.2	0	0	0	0	0	0	0	0	0	0	0	0	0	0	0	0
22-Apr-21	HI1	Chum	39	0.5	0	0	0	0	0	0	0	0	0	0	0	0	0	0	0	0
22-Apr-21	HI1	Chum	38	0.5	0	0	0	0	0	0	0	0	0	0	0	0	0	0	0	0
22-Apr-21	HI1	Chum	53	1.4	0	0	0	0	0	0	0	0	0	0	0	0	0	0	0	0
22-Apr-21	HI1	Chum	43	0.6	0	0	0	0	0	0	0	0	0	0	0	0	0	0	0	0
22-Apr-21	HI1	Chum	43	0.6	0	0	0	0	0	0	0	0	0	0	0	0	0	0	0	0
22-Apr-21	HI1	Chum	40	0.5	0	0	0	0	0	0	0	0	0	0	0	0	0	0	0	0
22-Apr-21	HI1	Chum	42	0.6	0	0	0	0	0	0	0	0	0	0	0	0	0	0	0	0
22-Apr-21	HI1	Chum	39	0.5	0	0	0	0	0	0	0	0	0	0	0	0	0	0	0	0
22-Apr-21	HI1	Chum	47	1.0	0	0	0	0	0	0	0	0	0	0	0	0	0	0	0	0
22-Apr-21	HI1	Chum	40	0.6	0	0	0	0	0	0	0	0	0	0	0	0	0	0	0	0
22-Apr-21	HI1	Chum	40	0.7	0	0	0	0	0	0	0	0	0	0	0	0	0	0	0	0
22-Apr-21	HI1	Chum	40	0.6	0	0	0	0	0	0	0	0	0	0	0	0	0	0	0	0
22-Apr-21	HI1	Chum	43	0.8	0	0	0	0	0	0	0	0	0	0	0	0	0	0	0	0
22-Apr-21	HI1	Chum	42	0.7	0	0	0	0	0	0	0	0	0	0	0	0	0	0	0	0
22-Apr-21	HI1	Chum	45	0.8	0	0	0	0	0	0	0	0	0	0	0	0	0	0	0	0
22-Apr-21	SI1	Chum	44	0.7	0	0	0	0	0	0	0	0	1	0	1	0	0	0	0	0
22-Apr-21	SI3	Chum	40	0.7	0	0	0	0	0	0	0	0	0	0	0	0	0	0	0	0
22-Apr-21	SI3	Coho	73	4.3	0	0	0	0	0	0	0	0	0	0	0	0	0	0	1	1
22-Apr-21	MC3	Chum	43	0.7	1	0	0	0	0	0	0	0	0	0	0	0	0	0	0	0
22-Apr-21	MC3	Chum	44	0.8	1	0	1	0	0	0	0	0	0	0	0	0	0	0	0	0
22-Apr-21	MC3	Chum	55	1.8	0	0	1	0	0	0	0	0	0	0	0	0	0	0	0	0
22-Apr-21	MC3	Chum	54	1.5	0	0	0	0	0	0	0	1	0	1	0	0	0	0	0	0
22-Apr-21	MC3	Chum	50	1.4	0	4	0	0	0	0	0	0	1	0	0	0	0	0	0	0
22-Apr-21	MC3	Chum	41	0.7	0	0	0	0	0	0	0	0	0	0	0	0	0	0	0	0
22-Apr-21	MC3	Chum	63	2.6	0	1	0	0	0	0	0	0	0	0	0	0	0	0	0	0
22-Apr-21	MC3	Chum	42	0.7	0	0	0	0	0	0	0	0	0	0	0	0	0	0	0	0
22-Apr-21	MC3	Chum	40	0.7	0	0	0	0	0	0	0	0	0	0	0	0	0	0	0	0
22-Apr-21	MC3	Chum	44	0.9	1	0	0	0	0	0	0	0	0	0	1	0	0	0	0	0
22-Apr-21	MC3	Chum	44	0.9	0	1	0	0	0	0	0	0	0	0	0	0	0	0	0	0
22-Apr-21	MC3	Chum	39	0.6	0	0	0	0	0	0	0	0	1	0	0	0	0	0	0	0

DATE COLLECTED	SITE	FISH SPECIES	LENGTH IN MM	WEIGHT IN G	LEP Co	LEP C1	LEP C2	LEP PAM	LEP PAF	LEP AM	LEP AF	CAL Co	CAL C1	CAL C2	CAL C3	CAL C4	CAL PAM	CAL_PAF	CAL AM	CAL AF
22-Apr-21	MC3	Chum	45	1.0	0	0	0	0	0	0	0	0	0	0	1	0	0	0	0	0
22-Apr-21	MC3	Chum	53	1.8	0	0	0	0	0	0	0	0	0	0	0	1	0	0	1	0
22-Apr-21	MC3	Chum	39	0.5	1	0	0	0	0	0	0	0	0	0	0	0	0	0	0	0
05-May-21	BS3	Chum	39	0.6	1	1	0	0	0	0	0	0	0	0	0	0	0	0	0	0
05-May-21	BS3	Chum	49	1.2	0	0	0	0	0	0	0	0	0	0	0	0	0	0	0	0
05-May-21	BS3	Chum	50	1.3	0	0	0	0	0	0	0	0	0	0	0	0	0	0	0	0
05-May-21	BS3	Chum	52	1.4	0	1	0	0	0	0	0	0	0	0	0	0	0	0	0	0
05-May-21	BS3	Chum	63	2.5	0	1	0	0	0	0	0	0	0	0	0	0	0	0	0	0
05-May-21	BS3	Chum	50	1.4	0	0	0	0	0	0	0	0	0	0	0	0	0	0	0	0
05-May-21	BS3	Chum	46	1.1	0	0	0	0	0	0	0	0	0	0	0	0	0	0	0	0
05-May-21	BS3	Chum	46	1.3	0	0	0	0	0	0	0	0	0	0	0	0	0	0	0	0
05-May-21	BS3	Chum	44	0.8	0	0	0	0	0	0	0	0	0	0	0	0	0	0	0	0
05-May-21	BS3	Chum	40	0.7	0	0	0	0	0	0	0	0	0	0	0	0	0	0	0	0
05-May-21	BS3	Chum	39	0.6	0	0	0	0	0	0	0	0	0	0	0	0	0	0	0	0
05-May-21	BS3	Chum	51	1.3	0	1	0	0	0	0	0	0	0	0	0	0	0	0	0	0
05-May-21	BS3	Chum	53	1.5	0	0	0	0	0	0	0	0	0	0	0	0	0	0	0	0
05-May-21	BS3	Chum	45	0.9	0	0	0	0	0	0	0	0	0	0	0	0	0	0	0	0
05-May-21	BS3	Chum	43	0.8	0	0	0	0	0	0	0	0	0	0	0	0	0	0	0	0
05-May-21	MC1	Chum	40	0.7	0	0	0	0	0	0	0	0	0	0	0	0	0	0	0	0
05-May-21	MC1	Chum	38	0.5	0	0	0	0	0	0	0	0	0	0	0	0	0	0	0	0
05-May-21	HI1	Chum	38	0.4	0	0	0	0	0	0	0	0	0	0	0	0	0	0	0	0
05-May-21	HI1	Chum	41	0.6	0	0	0	0	0	0	0	0	0	0	0	0	0	0	0	0
05-May-21	HI1	Chum	42	0.6	0	0	0	0	0	0	0	0	0	0	0	0	0	0	0	0
05-May-21	HI1	Chum	35	0.3	0	0	0	0	0	0	0	0	0	0	0	0	0	0	0	0
05-May-21	HI1	Chum	37	0.4	0	0	0	0	0	0	0	0	0	0	0	0	0	0	0	0
05-May-21	HI1	Chum	38	0.5	0	0	0	0	0	0	0	0	0	0	0	0	0	0	0	0
05-May-21	HI1	Chum	43	0.7	0	1	0	0	0	0	0	0	0	0	0	0	0	0	0	0
05-May-21	HI1	Chum	38	0.5	0	0	0	0	0	0	0	0	0	0	0	0	0	0	0	0
05-May-21	HI1	Chum	39	0.5	0	0	0	0	0	0	0	0	0	0	0	0	0	0	0	0
05-May-21	HI1	Chum	43	0.8	0	0	0	0	0	0	0	0	0	0	0	0	0	0	0	0
05-May-21	HI1	Chum	38	0.4	0	0	0	0	0	0	0	0	0	0	0	0	0	0	0	0
05-May-21	HI1	Chum	36	0.4	0	0	0	0	0	0	0	0	0	0	0	0	0	0	0	0
05-May-21	HI1	Chum	44	1.0	0	0	0	0	0	0	0	0	0	0	0	0	0	0	0	0
05-May-21	HI1	Chum	41	0.6	0	0	0	0	0	0	0	0	0	0	0	0	0	0	0	0
05-May-21	HI2	Chum	39	0.5	0	0	0	0	0	0	0	0	0	0	0	0	0	0	0	0
05-May-21	HI2	Chum	49	0.6	0	0	0	0	0	0	0	0	0	0	0	1	0	0	0	0
05-May-21	HI2	Coho	78	6.6	0	0	0	0	0	0	0	0	0	0	0	0	0	0	0	0
05-May-21	SI1	Chum	45	1.1	0	0	1	0	0	0	0	0	0	0	0	0	0	0	0	0
05-May-21	SI3	Chum	38	0.5	0	0	0	0	0	0	0	0	0	0	0	0	0	0	0	0
05-May-21	SI3	Coho	83	8.1	0	0	0	0	0	0	1	0	0	0	0	0	0	0	0	0
05-May-21	SD1	Coho	82	7.1	0	0	0	0	0	0	0	0	0	0	0	0	0	0	0	0
05-May-21	MC3	Coho	92	8.7	0	0	0	0	1	0	0	0	0	0	0	0	0	0	0	0
06-May-21	FC3	Chum	53	1.5	0	2	2	0	0	0	0	0	0	0	0	0	0	0	0	0
06-May-21	FC3	Chum	54	1.6	0	0	0	0	0	0	0	0	0	0	0	0	0	0	0	0

DATE COLLECTED	SITE	FISH SPECIES	LENGTH IN MM	WEIGHT IN G	LEP Co	LEP C1	LEP C2	LEP PAM	LEP PAF	LEP AM	LEP AF	CAL Co	CAL C1	CAL C2	CAL C3	CAL C4	CAL PAM	CAL_PAF	CAL AM	CAL AF
06-May-21	FC3	Chum	48	1.3	0	1	1	0	0	0	0	0	0	0	0	0	0	0	0	0
06-May-21	FC3	Chum	62	2.2	0	6	2	1	0	0	0	0	0	0	0	0	0	0	0	0
06-May-21	FC3	Chum	54	1.6	0	5	2	0	0	0	0	0	0	0	0	0	0	0	0	0
06-May-21	FC3	Chum	56	2.1	0	11	2	2	1	0	0	0	0	0	0	0	0	0	0	0
06-May-21	FC3	Chum	64	2.9	1	0	0	0	0	0	0	0	0	0	0	0	0	0	0	0
06-May-21	FC3	Chum	53	1.5	4	0	0	0	0	0	0	0	0	0	2	0	0	0	0	0
06-May-21	FC3	Chum	56	1.8	2	1	0	0	0	0	0	0	0	0	0	0	0	0	0	0
06-May-21	FC3	Chum	63	2.5	2	0	3	0	0	0	0	0	0	0	0	0	0	0	0	0
06-May-21	FC3	Chum	58	2.1	0	0	0	0	0	0	0	0	0	0	0	0	0	0	0	0
06-May-21	FC3	Chum	53	1.7	1	0	3	1	0	0	0	0	0	0	0	0	0	0	0	0
06-May-21	FC3	Chum	55	1.7	0	0	3	1	1	0	0	0	0	0	0	0	0	0	0	0
06-May-21	FC3	Chum	57	1.9	2	1	1	0	0	0	0	0	0	0	0	0	0	0	0	0
06-May-21	FC3	Chum	50	1.4	0	1	3	0	1	0	0	0	0	0	0	0	0	0	0	0
06-May-21	BS4	Chum	47	1.1	2	0	0	0	0	0	0	0	0	0	0	0	0	0	0	0
06-May-21	BS4	Chum	48	1.4	0	1	0	0	0	0	0	0	0	0	0	0	0	0	0	0
06-May-21	BS4	Chum	48	1.1	0	0	0	0	0	0	0	0	0	0	0	0	0	0	0	0
06-May-21	BS4	Chum	46	1.1	1	2	0	0	0	0	0	0	0	0	0	0	0	0	0	0
06-May-21	BS4	Chum	50	1.4	0	1	0	0	0	0	0	0	0	0	0	0	0	0	0	0
06-May-21	BS4	Chum	40	0.7	0	0	0	0	0	0	0	0	0	0	0	0	0	0	0	0
06-May-21	BS4	Chum	48	1.3	0	2	0	0	0	0	0	0	0	0	0	0	0	0	0	0
06-May-21	BS4	Chum	67	3.2	0	0	0	0	0	0	0	0	1	0	1	0	0	1	0	0
06-May-21	BS4	Chum	52	1.8	0	0	0	0	0	0	0	0	0	0	0	0	0	0	0	0
06-May-21	BS4	Chum	70	3.6	0	1	1	0	0	0	0	0	0	0	0	0	0	0	0	0
06-May-21	BS4	Chum	57	1.9	2	1	0	0	0	0	0	0	0	0	0	0	0	1	0	0
06-May-21	BS4	Chum	54	1.6	1	1	0	0	0	0	0	0	0	0	0	0	0	0	0	0
06-May-21	BS4	Chum	48	1.4	0	0	0	0	0	0	0	0	0	0	0	0	0	0	0	0
06-May-21	BS4	Chum	49	1.3	0	0	0	0	0	0	0	0	0	0	0	0	0	0	0	0
06-May-21	BS4	Chum	52	1.4	0	0	0	0	0	0	0	0	0	0	0	0	0	0	0	0
06-May-21	FC5	Chum	66	2.9	0	0	0	0	0	0	0	0	0	0	0	0	0	0	0	0
06-May-21	FC5	Chum	49	1.5	2	0	1	0	0	0	0	0	0	0	0	0	0	0	0	0
06-May-21	FC5	Chum	52	1.7	0	0	0	0	0	0	0	0	0	0	0	0	0	0	0	0
06-May-21	FC5	Chum	65	3.7	0	0	1	0	0	0	0	0	0	0	0	0	0	0	0	0
06-May-21	FC5	Chum	62	3.0	0	0	0	0	0	0	0	0	0	0	0	0	0	0	0	0
06-May-21	FC5	Chum	59	2.5	0	0	2	0	0	0	0	0	0	0	0	0	0	0	0	0
06-May-21	FC5	Chum	68	3.8	0	0	0	1	0	0	0	0	0	0	0	0	0	0	0	0
06-May-21	FC5	Chum	50	1.4	0	0	0	0	0	0	0	0	0	0	0	0	0	0	0	0
06-May-21	FC5	Chum	48	1.3	0	0	0	0	0	0	0	0	0	0	0	0	0	0	0	0
06-May-21	FC5	Chum	67	3.3	0	0	1	0	0	0	0	0	0	0	0	0	0	0	0	0
06-May-21	FC2	Chum	59	2.1	1	1	0	0	0	0	0	0	0	0	0	0	0	0	0	0
06-May-21	FC2	Chum	60	2.2	1	0	0	0	0	0	0	0	0	0	0	0	0	0	0	0
06-May-21	FC2	Chum	64	3.1	2	1	2	0	0	0	0	0	0	0	0	0	0	0	0	0
06-May-21	FC2	Chum	65	3.5	0	1	0	0	0	0	0	0	0	0	0	0	0	0	0	0
06-May-21	FC2	Chum	64	2.8	0	1	0	0	0	0	0	0	0	0	0	0	0	0	0	0
06-May-21	FC2	Chum	64	2.7	0	1	1	0	1	0	0	0	0	0	0	0	0	0	0	0

DATE COLLECTED	SITE	FISH SPECIES	LENGTH IN MM	WEIGHT IN G	LEP Co	LEP C1	LEP C2	LEP PAM	LEP PAF	LEP AM	LEP AF	CAL Co	CAL C1	CAL C2	CAL C3	CAL C4	CAL PAM	CAL_PAF	CAL AM	CAL AF
06-May-21	FC2	Chum	64	3.0	0	0	0	0	0	0	0	0	0	0	0	0	0	0	0	0
06-May-21	FC2	Chum	66	3.0	0	0	1	0	0	0	0	0	0	0	0	0	0	0	0	0
06-May-21	BS2	Chum	64	2.9	1	2	0	0	0	0	0	0	0	0	0	0	0	0	0	0
06-May-21	BS2	Chum	72	4.3	0	0	0	0	0	0	0	0	0	0	0	0	0	0	0	0
06-May-21	BS2	Chum	61	2.9	1	1	0	0	0	0	0	0	0	0	0	0	0	0	0	0
06-May-21	BS2	Chum	63	3.1	1	0	1	1	0	0	0	0	0	0	0	0	0	0	0	0
06-May-21	BS2	Chum	47	1.3	5	0	1	0	0	0	0	0	0	0	0	0	0	0	0	0
06-May-21	BS2	Chum	65	3.2	0	0	0	0	0	0	0	0	0	0	0	0	1	0	0	0
06-May-21	BS2	Chum	74	5.3	1	0	0	0	0	0	0	0	0	0	0	0	0	0	0	0
06-May-21	BS2	Chum	59	2.3	1	0	0	0	0	0	0	0	0	0	0	0	0	0	0	0
06-May-21	BS2	Chum	73	4.9	2	0	1	0	0	0	0	0	0	0	0	0	0	0	0	0
06-May-21	BS2	Chum	58	2.6	2	0	0	0	0	0	0	0	0	0	0	0	0	0	0	0
06-May-21	BS2	Chum	58	2.7	4	0	0	0	0	0	0	0	0	0	0	0	0	0	0	0
06-May-21	BS2	Chum	72	4.6	1	0	0	0	0	0	0	0	0	0	0	0	0	0	0	0
06-May-21	BS2	Chum	63	3.5	0	2	0	0	0	0	0	0	0	0	0	0	0	0	0	0
06-May-21	BS2	Chum	59	2.4	0	1	0	0	0	0	0	0	0	0	0	0	0	0	0	0
06-May-21	BS2	Chum	64	3.3	2	0	0	0	0	0	0	0	0	0	0	0	0	0	0	0
06-May-21	BS5	Chum	38	0.7	0	0	0	0	0	0	0	0	0	0	0	0	0	0	0	0
06-May-21	BS5	Chum	44	1.0	0	0	0	0	0	0	0	0	0	0	0	0	0	0	0	0
06-May-21	BS5	Chum	47	1.1	0	0	0	0	0	0	0	0	0	0	0	0	0	0	0	0
06-May-21	BS5	Chum	44	1.1	0	0	0	0	0	0	0	0	0	0	0	0	0	0	0	0
06-May-21	BS5	Chum	43	0.9	0	0	0	0	0	0	0	0	0	0	0	0	0	0	0	0
06-May-21	BS5	Chum	39	0.7	0	0	0	0	0	0	0	0	0	0	0	0	0	0	0	0
06-May-21	BS5	Chum	36	0.5	0	0	0	0	0	0	0	0	0	0	0	0	0	0	0	0
06-May-21	BS5	Chum	43	1.0	0	0	0	0	0	0	0	0	0	0	0	0	0	0	0	0
06-May-21	BS5	Chum	42	0.8	0	0	0	0	0	0	0	0	0	0	0	0	0	0	0	0
06-May-21	BS5	Chum	45	0.9	0	0	0	0	0	0	0	0	0	0	0	0	0	0	0	0
06-May-21	BS5	Chum	43	0.9	0	0	0	0	0	0	0	0	0	0	0	0	0	0	0	0
06-May-21	BS5	Chum	41	0.8	0	0	0	0	0	0	0	0	0	0	0	0	0	0	0	0
06-May-21	BS5	Chum	43	0.9	0	0	0	0	0	0	0	0	0	0	0	0	0	0	0	0
06-May-21	BS5	Chum	38	0.6	0	0	0	0	0	0	0	0	0	0	0	0	0	0	0	0
06-May-21	BS5	Chum	46	1.0	1	0	0	0	0	0	0	0	0	0	0	0	0	0	0	0
06-May-21	BS5	Coho	82	6.2	0	0	0	0	0	0	0	0	0	0	0	0	0	0	0	0
06-May-21	BS6	Chum	40	0.8	0	0	1	0	0	0	0	0	0	0	0	0	0	0	0	0
06-May-21	BS6	Chum	45	1.1	4	0	1	0	0	0	0	0	0	0	0	0	0	0	0	0
06-May-21	BS6	Chum	41	1.1	6	2	2	0	0	0	0	0	0	0	0	0	0	0	0	0
06-May-21	BS6	Chum	44	1.1	1	1	0	0	0	0	0	0	0	0	0	0	0	0	0	0
06-May-21	BS6	Chum	44	1.0	2	1	2	0	0	0	0	0	0	0	0	0	0	0	0	0
06-May-21	BS6	Chum	46	1.2	5	2	2	0	0	0	0	0	0	0	0	0	0	0	0	0
06-May-21	BS6	Chum	49	1.5	7	2	2	0	1	0	0	0	0	0	0	0	0	0	0	0
06-May-21	BS6	Chum	53	1.6	2	0	4	0	0	0	0	0	0	0	0	0	0	0	0	0
06-May-21	BS6	Chum	40	0.8	0	2	1	0	0	0	0	0	0	0	0	0	0	0	0	0
06-May-21	BS6	Chum	47	1.3	2	2	3	0	0	0	0	0	0	0	0	0	0	0	0	0
06-May-21	BS6	Chum	34	0.5	1	0	0	0	0	0	0	0	0	0	0	0	0	0	0	0

DATE COLLECTED	SITE	FISH SPECIES	LENGTH IN MM	WEIGHT IN G	LEP Co	LEP C1	LEP C2	LEP PAM	LEP PAF	LEP AM	LEP AF	CAL Co	CAL C1	CAL C2	CAL C3	CAL C4	CAL PAM	CAL_PAF	CAL AM	CAL AF
06-May-21	BS6	Chum	44	1.1	3	2	0	0	0	0	0	0	0	0	0	0	0	0	0	0
06-May-21	BS6	Chum	44	1.0	4	0	2	1	0	0	0	0	0	0	0	0	0	0	0	0
06-May-21	BS6	Chum	41	0.7	3	1	0	0	0	0	0	0	0	0	0	0	0	0	0	0
06-May-21	BS6	Chum	45	1.1	7	2	1	0	0	0	0	0	0	0	0	0	0	0	0	0
06-May-21	FC4	Chum	65	3.1	0	0	0	0	0	0	0	0	0	0	0	0	0	0	0	0
06-May-21	FC4	Chum	59	2.6	1	2	0	0	0	0	0	0	0	0	0	0	0	0	0	0
06-May-21	FC4	Chum	62	2.6	0	0	1	0	0	0	0	0	0	0	0	0	0	0	0	0
06-May-21	FC4	Chum	66	3.3	0	1	0	0	0	0	0	0	0	0	0	0	0	0	0	0
06-May-21	FC4	Chum	59	2.5	0	2	0	0	0	0	0	0	0	0	0	0	0	0	0	0
06-May-21	FC4	Chum	44	0.8	0	0	0	0	0	0	0	0	0	0	0	0	0	0	0	0
06-May-21	FC4	Chum	58	2.3	0	0	0	0	0	0	0	0	0	0	0	0	0	0	0	0
06-May-21	FC4	Chum	58	2.5	0	2	0	0	0	0	0	0	0	0	0	0	0	0	0	0
06-May-21	FC4	Chum	59	2.3	1	0	0	1	0	0	0	0	0	0	0	0	0	0	0	0
06-May-21	FC4	Chum	60	2.3	0	0	0	0	0	0	0	0	0	0	0	0	0	0	0	0
06-May-21	FC4	Chum	45	1.0	0	1	1	0	0	0	0	0	0	0	0	0	0	0	0	0
06-May-21	FC4	Chum	64	3.0	0	1	0	0	0	0	0	0	0	0	0	0	0	0	0	0
06-May-21	FC4	Chum	63	2.9	0	1	0	0	0	0	0	0	0	0	0	0	0	0	0	0
06-May-21	FC4	Chum	58	2.1	0	1	1	0	0	0	0	0	0	0	0	0	0	0	0	0
06-May-21	FC4	Chum	66	3.3	0	2	0	0	0	0	0	0	0	0	0	0	0	0	0	0
19-May-21	MC1	Chum	74	4.3	0	1	0	1	0	0	1	0	0	0	0	0	0	0	0	0
19-May-21	MC1	Chum	78	5.7	0	0	0	0	0	0	0	0	0	0	0	0	0	2	0	0
19-May-21	MC1	Chum	66	3.5	0	0	0	1	1	0	0	0	0	0	0	0	0	1	0	0
19-May-21	MC1	Chum	55	1.7	0	0	0	0	0	0	0	0	0	0	0	0	0	0	0	0
19-May-21	MC1	Chum	85	7.3	0	0	0	0	0	0	0	0	0	0	0	0	0	0	0	0
19-May-21	MC1	Coho	95	13.0	0	0	1	0	0	0	0	0	0	0	0	0	0	0	0	0
19-May-21	SI2	Chum	45	1.0	0	0	0	0	0	0	0	0	0	0	0	0	0	0	0	0
19-May-21	SI1	Chum	53	1.3	0	0	0	0	0	0	0	0	0	0	0	0	0	0	0	0
19-May-21	SI1	Chum	57	2.0	0	0	0	0	0	0	0	0	0	0	0	0	0	0	0	0
19-May-21	SI1	Chum	60	2.6	0	0	0	0	0	0	0	0	0	0	0	0	0	0	0	0
19-May-21	SI1	Chum	53	1.7	0	0	0	1	0	0	0	0	0	0	0	0	0	0	0	0
19-May-21	SI1	Chum	55	1.9	0	0	0	0	0	0	0	0	0	0	0	0	0	0	0	0
19-May-21	SI1	Chum	52	1.5	0	0	0	0	0	0	0	0	0	0	0	0	0	0	0	0
19-May-21	SI1	Chum	53	1.4	0	0	0	0	0	0	0	0	0	0	0	0	0	0	0	0
19-May-21	SI1	Chum	54	1.9	0	0	0	0	0	0	0	0	0	0	0	0	0	0	0	0
19-May-21	SI1	Chum	55	1.9	0	0	1	0	0	0	0	0	0	0	0	0	0	0	0	0
19-May-21	SI1	Chum	50	1.7	0	0	0	0	0	0	0	0	0	0	0	0	0	0	0	0
19-May-21	SI1	Chum	50	1.4	0	0	0	0	0	0	0	0	0	0	0	0	0	0	0	0
19-May-21	SI1	Chum	53	1.4	0	0	0	0	0	0	0	0	0	0	0	0	0	0	0	0
19-May-21	SI1	Chum	48	1.3	0	0	1	0	0	0	0	0	0	0	0	0	0	0	0	0
19-May-21	SI1	Chum	55	2.0	0	0	0	0	0	0	0	0	0	0	0	0	0	0	0	0
19-May-21	SI1	Chum	57	2.1	0	0	0	0	0	0	0	0	0	0	0	0	0	0	0	0
19-May-21	BS3	Chum	53	1.3	0	1	0	0	0	0	0	0	0	0	0	0	0	0	0	0
19-May-21	BS3	Chum	55	1.6	0	0	1	0	0	0	0	0	0	0	0	0	0	0	0	0
19-May-21	BS3	Coho	90	7.8	0	0	0	0	0	0	0	0	0	0	0	0	0	0	0	0

DATE COLLECTED	SITE	FISH SPECIES	LENGTH IN MM	WEIGHT IN G	LEP Co	LEP C1	LEP C2	LEP PAM	LEP PAF	LEP AM	LEP AF	CAL Co	CAL C1	CAL C2	CAL C3	CAL C4	CAL PAM	CAL_PAF	CAL AM	CAL AF
19-May-21	BS3	Coho	79	6.2	0	0	0	0	0	0	0	0	0	0	0	0	0	0	0	0
19-May-21	BS3	Coho	87	8.9	0	0	0	0	0	0	0	0	0	0	0	0	0	0	0	0
19-May-21	BS3	Coho	87	7.7	0	0	0	0	0	0	0	0	0	0	0	0	0	0	0	0
19-May-21	BS3	Coho	93	8.9	0	0	2	0	0	0	0	0	0	0	0	0	0	0	0	0
19-May-21	BS3	Coho	84	6.9	0	0	0	0	0	0	0	0	0	0	0	0	0	0	0	0
19-May-21	BS3	Coho	89	10.4	0	0	0	0	0	0	0	0	0	0	0	0	0	0	0	0
19-May-21	BS3	Coho	99	11.9	0	0	0	0	0	0	0	0	0	0	0	0	0	0	0	0
19-May-21	BS3	Coho	100	12.3	0	0	0	0	0	0	0	0	0	0	0	0	0	0	0	0
19-May-21	HI1	Chum	53	1.4	0	0	1	0	0	0	0	0	0	0	0	0	0	0	0	0
19-May-21	HI1	Chum	50	1.2	0	0	0	0	0	0	0	0	0	0	0	0	0	0	0	0
19-May-21	HI1	Chum	64	2.9	0	0	0	0	0	0	0	0	0	0	0	0	0	0	0	0
19-May-21	HI1	Chum	55	1.8	0	0	1	0	0	0	0	0	0	0	0	0	0	0	0	0
19-May-21	HI1	Chum	53	1.6	0	0	0	0	0	0	0	0	0	0	0	0	0	0	0	0
19-May-21	HI1	Chum	60	2.2	0	0	0	0	0	0	0	0	0	0	0	0	0	0	0	0
19-May-21	HI1	Chum	53	1.6	0	0	1	0	0	0	0	0	0	0	0	0	0	0	0	0
19-May-21	HI1	Chum	56	2.1	0	0	0	0	0	0	0	0	0	0	0	0	0	0	0	0
19-May-21	HI1	Chum	54	1.8	0	0	0	0	0	0	0	0	0	0	0	0	0	0	0	0
19-May-21	HI1	Chum	49	1.2	0	0	0	0	0	0	0	0	0	0	0	0	0	0	0	0
19-May-21	HI1	Chum	64	2.6	0	0	0	0	0	0	0	0	0	0	0	0	0	0	0	0
19-May-21	HI1	Chum	53	1.6	0	0	0	0	0	0	0	0	0	0	0	0	0	0	0	0
19-May-21	HI1	Chum	78	5.4	0	0	0	0	0	0	0	0	0	0	0	0	0	0	0	0
19-May-21	HI1	Chum	52	1.4	0	0	0	0	0	0	0	0	0	0	0	0	0	0	0	0
19-May-21	HI1	Chum	41	1.4	0	0	0	0	0	0	0	0	0	0	0	0	0	0	0	0
19-May-21	HI1	Coho	82	6.9	0	0	0	0	0	0	0	0	0	0	0	0	0	0	0	0
20-May-21	BS4	Chum	40	0.7	0	0	0	0	0	0	0	0	0	0	0	0	0	0	0	0
20-May-21	BS4	Chum	43	0.8	0	0	0	0	0	0	0	0	0	0	0	0	0	0	0	0
20-May-21	BS4	Chum	55	1.9	0	0	1	0	0	0	0	0	0	0	0	0	0	0	0	0
20-May-21	BS4	Chum	50	1.5	0	1	1	0	0	0	0	0	0	0	0	0	0	0	0	0
20-May-21	BS4	Chum	50	1.6	0	0	0	0	1	0	0	0	0	0	0	0	0	0	0	0
20-May-21	BS4	Chum	43	1.0	0	0	1	0	0	0	0	0	0	0	0	0	0	0	0	0
20-May-21	BS4	Chum	53	1.8	0	0	1	1	0	0	0	0	0	0	0	0	0	0	0	0
20-May-21	BS4	Chum	40	0.7	0	0	0	0	0	0	0	0	0	0	0	0	0	0	0	0
20-May-21	BS4	Chum	47	1.3	1	0	0	0	0	0	0	0	0	0	0	0	0	0	0	0
20-May-21	BS4	Chum	39	0.7	0	0	0	0	0	0	0	0	0	0	0	0	0	0	0	0
20-May-21	BS4	Chum	48	0.9	0	0	1	0	0	0	0	0	0	0	0	0	0	0	0	0
20-May-21	BS4	Chum	41	0.6	0	0	0	0	0	0	0	0	0	0	0	0	0	0	0	0
20-May-21	BS4	Chum	52	1.6	0	0	0	0	0	0	0	0	0	0	0	0	0	0	0	0
20-May-21	BS4	Chum	43	1.0	0	1	1	1	0	0	0	0	0	0	0	0	0	0	0	0
20-May-21	BS4	Chum	44	1.0	0	0	0	0	0	0	0	0	0	0	0	0	0	0	0	0
20-May-21	BS2	Chum	65	3.4	0	1	1	2	0	0	0	0	0	0	0	0	0	0	0	0
20-May-21	BS2	Chum	58	2.3	0	1	1	0	0	0	0	0	0	0	0	0	0	0	0	0
20-May-21	BS2	Chum	72	4.4	0	0	0	0	0	0	0	0	0	0	0	0	0	0	0	0
20-May-21	BS2	Chum	77	5.5	0	0	0	0	0	0	0	0	0	0	0	0	0	0	0	0
20-May-21	BS2	Chum	78	7.5	0	0	0	0	0	0	0	0	0	0	0	0	0	0	0	0

DATE COLLECTED	SITE	FISH SPECIES	LENGTH IN MM	WEIGHT IN G	LEP Co	LEP C1	LEP C2	LEP PAM	LEP PAF	LEP AM	LEP AF	CAL Co	CAL C1	CAL C2	CAL C3	CAL C4	CAL PAM	CAL_PAF	CAL AM	CAL AF
20-May-21	BS2	Chum	64	3.3	1	0	2	0	0	0	0	0	0	0	0	0	0	0	0	0
20-May-21	BS2	Chum	79	5.2	0	0	1	0	0	0	0	0	0	0	0	0	0	0	0	0
20-May-21	BS2	Chum	86	7.8	0	0	0	0	0	0	0	0	0	0	0	0	0	0	0	0
20-May-21	BS5	Chum	38	0.6	0	0	0	0	0	0	0	0	0	0	0	0	0	0	0	0
20-May-21	BS5	Chum	45	1.1	0	0	0	0	0	0	0	0	0	0	0	0	0	0	0	0
20-May-21	BS5	Chum	38	0.5	0	0	0	0	0	0	0	0	0	0	0	0	0	0	0	0
20-May-21	BS5	Chum	51	1.5	0	0	0	0	0	0	0	0	0	0	0	0	0	0	0	0
20-May-21	BS5	Chum	47	1.2	0	0	0	0	0	0	0	0	0	0	0	0	0	0	0	0
20-May-21	BS5	Chum	44	0.9	0	0	0	0	0	0	0	0	0	0	0	0	0	0	0	0
20-May-21	BS5	Chum	36	0.6	0	0	0	0	0	0	0	0	0	0	0	0	0	0	0	0
20-May-21	BS5	Chum	41	0.7	0	0	0	0	0	0	0	0	0	0	0	0	0	0	0	0
20-May-21	BS5	Chum	44	0.9	0	0	0	0	0	0	0	0	0	0	0	0	0	0	0	0
20-May-21	BS5	Chum	40	0.6	0	0	0	0	0	0	0	0	0	0	0	0	0	0	0	0
20-May-21	BS5	Chum	42	0.8	0	0	0	0	0	0	0	0	0	0	0	0	0	0	0	0
20-May-21	BS5	Chum	45	1.0	0	0	0	0	0	0	0	0	0	0	0	0	0	0	0	0
20-May-21	FC2	Chum	51	1.4	0	0	0	0	0	0	0	0	0	0	0	0	0	0	0	0
20-May-21	FC2	Chum	56	1.9	0	0	0	0	0	0	0	0	0	0	0	0	0	0	0	0
20-May-21	FC2	Chum	51	1.5	0	0	0	0	0	0	0	0	0	0	0	0	0	0	0	0
20-May-21	FC2	Chum	55	2.0	0	0	0	1	0	0	0	0	0	0	0	0	0	0	0	0
20-May-21	FC2	Chum	54	1.7	0	0	0	1	0	0	0	0	0	0	0	0	0	0	0	0
20-May-21	FC2	Chum	51	1.6	0	0	0	0	0	0	0	0	0	0	0	0	0	0	0	0
20-May-21	FC2	Chum	54	1.9	0	0	1	0	0	0	0	0	0	0	0	0	0	0	0	0
20-May-21	FC2	Chum	54	1.7	0	0	0	0	0	0	0	0	0	0	0	0	0	0	0	0
20-May-21	FC2	Chum	55	1.8	0	0	1	0	0	0	0	0	0	0	0	0	0	0	0	0
20-May-21	FC2	Chum	55	2.0	0	0	3	0	0	0	0	0	0	0	0	0	0	0	0	0
20-May-21	FC2	Chum	52	1.7	0	0	0	0	0	0	0	0	0	0	0	0	0	0	0	0
20-May-21	FC2	Chum	57	2.2	0	0	0	0	1	0	0	0	0	0	0	0	0	0	0	0
20-May-21	FC2	Chum	54	1.9	0	0	0	0	0	0	0	0	0	0	0	0	0	0	0	0
20-May-21	FC2	Chum	57	2.0	0	0	0	0	0	0	0	0	0	0	0	0	0	0	0	0
20-May-21	FC2	Chum	56	2.1	0	0	1	0	0	0	0	0	0	0	0	0	0	0	0	0
20-May-21	FC2	Coho	89	7.8	0	1	5	0	0	0	0	0	0	0	0	0	0	0	0	0
20-May-21	FC2	Coho	115	17.5	0	0	4	2	0	0	0	0	0	0	0	0	0	0	0	0
20-May-21	FC2	Coho	85	7.3	0	0	0	0	0	0	0	0	0	0	0	0	0	0	0	0
20-May-21	FC2	Coho	90	9.1	0	0	0	0	0	0	0	0	0	0	0	0	0	0	0	0
20-May-21	FC3	Chum	64	3.7	0	4	1	1	0	0	0	0	0	0	0	0	0	0	0	0
20-May-21	FC3	Chum	45	1.0	0	1	1	0	0	0	0	0	0	0	0	0	0	0	0	0
20-May-21	FC3	Chum	71	4.1	0	2	3	0	2	1	0	0	0	0	0	0	0	0	0	0
20-May-21	FC4	Chum	53	1.8	0	1	0	0	1	0	0	0	0	0	0	0	0	0	0	0
20-May-21	FC4	Chum	47	1.2	0	0	0	0	0	0	0	0	0	0	0	0	0	0	0	0
20-May-21	FC4	Coho	93	9.7	0	0	2	0	0	0	0	0	0	0	0	0	0	0	0	0
20-May-21	BS6	Chum	40	0.8	0	1	0	0	0	0	0	0	0	0	0	0	0	0	0	0
20-May-21	BS6	Chum	51	1.2	0	1	0	0	0	0	0	0	0	0	0	0	0	0	0	0
20-May-21	BS6	Chum	41	0.8	0	0	0	0	0	0	0	0	0	0	0	0	0	0	0	0
20-May-21	BS6	Chum	48	1.2	0	1	1	0	0	0	0	0	0	0	0	0	0	0	0	0

DATE COLLECTED	SITE	FISH SPECIES	LENGTH IN MM	WEIGHT IN G	LEP Co	LEP C1	LEP C2	LEP PAM	LEP PAF	LEP AM	LEP AF	CAL Co	CAL C1	CAL C2	CAL C3	CAL C4	CAL PAM	CAL_PAF	CAL AM	CAL AF
20-May-21	BS6	Chum	45	1.0	0	1	1	0	1	0	0	0	0	0	0	0	0	0	0	0
20-May-21	BS6	Chum	58	2.1	1	0	0	0	0	0	0	0	0	0	0	0	0	0	0	0
20-May-21	BS6	Chum	40	0.8	1	0	1	0	0	0	0	0	0	0	0	0	0	0	0	0
20-May-21	BS6	Chum	44	1.0	0	0	2	0	0	0	0	0	0	0	0	0	0	0	0	0
20-May-21	BS6	Chum	41	0.8	0	0	0	0	0	0	0	0	0	0	0	0	0	0	0	0
20-May-21	BS6	Chum	44	0.9	0	2	1	0	0	0	0	0	0	0	0	0	0	0	0	0
20-May-21	BS6	Chum	49	1.6	0	0	0	0	0	0	0	0	0	0	0	0	0	0	0	0
20-May-21	BS6	Chum	46	1.0	0	1	3	0	0	0	0	0	0	0	0	0	0	0	0	0
20-May-21	BS6	Chum	45	1.2	0	0	3	0	0	0	0	0	0	0	0	0	0	0	0	0
20-May-21	BS6	Chum	39	0.7	0	2	1	0	0	0	0	0	0	0	0	0	0	0	0	0
20-May-21	BS6	Chum	41	0.9	0	1	0	0	0	0	0	0	0	0	0	0	0	0	0	0

Appendix IV – Historical Comparison (2016-2021)

A comparison of the historical results of analysis for sea lice infestation on chum salmon collected by beach seine in Clayoquot Sound, BC from 2016 to 2021.

Year	Chum sample size	Total # of chum infested	Total # of lice observed	Prevalence (%)	Abundance	Intensity
2016	836	314	726	37.6	0.87	2.3
2017	1122	222	354	19.8	0.32	1.6
2018	696	284	1254	40.8	1.80	4.4
2019	792	305	922	38.5	1.16	3.0
2020	696	197	367	28.3	0.53	1.9
2021	854	240	507	28.1	0.59	2.1
Total	4996	1562	4130	31.3	0.83	2.6

A comparison of the number of chum analyzed, the number of infested chum and the number of lice by site as determined for chum salmon collected in Clayoquot Sound between 2016 and 2021.

Site	# of Chum Analyzed						# of Infested Chum						# of Lice					
	2016	2017	2018	2019	2020	2021	2016	2017	2018	2019	2020	2021	2016	2017	2018	2019	2020	2021
BS1	56	119	67	68	73	32	44	43	44	55	40	8	110	63	161	277	70	12
BS2	90	63	32	61	58	47	50	9	12	46	24	27	125	11	30	160	42	56
BS3	15	23	47	32	5	62	3	1	14	4	0	15	10	1	28	8	0	17
BS4	79	34	42	55	61	70	39	0	11	39	10	19	94	0	29	106	18	34
BS5	90	63	90	92	62	72	6	0	7	11	4	2	10	0	12	13	4	2
BS6	64	92	78	44	90	72	33	13	29	22	15	38	97	16	65	51	22	126
FC2	0	39	34	23	5	68	0	3	14	14	0	25	0	4	23	29	0	35
FC3	35	60	10	19	5	63	15	4	3	3	2	29	19	4	3	8	2	113
FC4	61	30	1	30	1	48	5	1	1	5	0	16	5	1	4	9	0	25
FC5	23	65	-	60	52	55	14	7	-	25	11	15	29	7	-	35	14	21
HI1	42	61	79	68	38	74	4	14	45	2	0	4	5	22	278	3	0	4
HI2	15	90	43	60	23	19	0	39	33	7	3	1	0	78	353	7	6	1
MC1	63	90	13	46	6	37	12	10	3	7	0	6	13	22	8	10	0	11
MC3	20	90	31	0	47	43	5	30	17	0	26	22	9	51	60	0	55	34
SD1	-	-	-	-	22	3	-	-	-	-	11	0	-	-	-	-	13	0
SI1	90	91	30	37	36	47	57	33	13	21	15	11	120	56	33	34	22	12
SI2	61	78	57	96	90	31	27	15	27	44	35	2	80	18	147	172	98	4
SI3	32	34	42	1	22	11	0	0	11	0	1	0	0	0	20	0	1	0
Total	836	1122	696	792	696	854	314	222	284	305	197	240	726	354	1254	922	367	507

A comparison of calculated sea lice prevalence, abundance and intensity by site as determined for chum salmon collected in Clayoquot Sound between 2016 and 2021

Site	Sea Lice Prevalence (%)						Sea Lice Abundance						Sea Lice Intensity					
	2016	2017	2018	2019	2020	2021	2016	2017	2018	2019	2020	2021	2016	2017	2018	2019	2020	2021
BS1	78.6	36.1	65.7	80.9	54.8	25.0	1.96	0.53	2.40	4.07	0.96	0.38	2.5	1.5	3.7	5.0	1.8	1.5
BS2	55.6	14.3	37.5	75.4	41.4	57.4	1.39	0.17	0.94	2.62	0.72	1.19	2.5	1.2	2.5	3.5	1.8	2.1
BS3	20.0	4.3	29.8	12.5	0.0	24.2	0.67	0.04	0.60	0.25	0.00	0.27	3.3	1.0	2.0	2.0	0.0	1.1
BS4	49.4	0.0	26.2	70.9	16.4	27.1	1.19	0.00	0.69	1.93	0.30	0.49	2.4	0.0	2.6	2.7	1.8	1.8
BS5	6.7	0.0	7.8	12.0	6.5	2.8	0.11	0.00	0.13	0.14	0.06	0.03	1.7	0.0	1.7	1.2	1.0	1.0
BS6	51.6	14.1	37.2	50.0	16.7	52.8	1.52	0.17	0.83	1.16	0.24	1.75	2.9	1.2	2.2	2.3	1.5	3.3
FC2	-	7.7	41.2	60.9	0.0	36.8	-	0.10	0.68	1.26	0.00	0.51	0.0	1.3	1.6	2.1	0.0	1.4
FC3	42.9	6.7	30.0	15.8	40.0	46.0	0.54	0.07	0.30	0.42	0.40	1.79	1.3	1.0	1.0	2.7	1.0	3.9
FC4	8.2	3.3	100.0	16.7	0.0	33.3	0.08	0.03	4.00	0.30	0.00	0.52	1.0	1.0	4.0	1.8	0.0	1.6
FC5	60.9	10.8	-	41.7	21.2	27.3	1.26	0.11	-	0.58	0.27	0.38	2.1	1.0	-	1.4	1.3	1.4
HI1	9.5	23.0	57.0	2.9	0.0	5.4	1.2	0.36	3.52	0.04	0.00	0.05	1.3	1.6	6.2	1.5	0.0	1.0
HI2	0.0	43.3	76.7	11.7	13.0	5.3	0.00	0.87	8.21	0.12	0.26	0.05	0.0	2.0	10.7	1.0	2.0	1.0
MC1	19.0	11.1	23.1	15.2	0.0	16.2	0.21	0.24	0.62	0.22	0.00	0.30	1.1	2.2	2.7	1.4	0.0	1.8
MC3	25.0	33.3	54.8	-	55.3	51.2	0.45	0.57	1.94	-	1.17	0.79	1.8	1.7	3.5	0.0	2.1	1.5
SD1	-	-	-	-	50.0	0.0	-	-	-	-	0.59	0.00	-	-	-	-	1.2	0.0
SI1	63.3	36.3	43.3	56.8	41.7	23.4	1.33	0.62	1.10	0.92	0.61	0.26	2.1	1.7	2.5	1.6	1.5	1.1
SI2	44.3	19.2	47.4	45.8	38.9	6.5	1.31	0.23	2.58	1.79	1.09	0.13	3.0	1.2	5.4	3.9	2.8	2.0
SI3	0	0.0	26.2	0.0	4.5	0.0	0.00	0.00	0.48	0.00	0.05	0.00	0.0	0.0	1.8	0.0	1.0	0.0
Total	37.6	19.8	40.8	38.5	28.3	28.1	0.87	0.32	1.80	1.16	0.53	0.59	2.3	1.6	4.4	3.0	1.9	2.1

A comparison of the number of chum analyzed, the number of infested chum and the number of lice by sampling area as determined for chum salmon collected in Clayoquot Sound between 2016 and 2021.

Site	# of Chum Analyzed						# of Infested Chum						# of Lice					
	2016	2017	2018	2019	2020	2021	2016	2017	2018	2019	2020	2021	2016	2017	2018	2019	2020	2021
SI (3)	183	203	129	134	148	89	84	48	51	65	51	13	200	74	200	206	121	16
MC (2)	83	180	44	46	53	80	17	40	20	7	26	28	22	73	68	10	55	45
HI (2)	57	151	122	128	61	93	4	53	78	9	3	5	5	100	631	10	6	5
BS (6)	394	394	356	352	349	355	175	66	117	177	93	109	446	91	325	615	156	247
FC (4)	119	194	45*	132	63	234	34	7	18*	47	13	85	53	16	30*	81	16	194
SD (1)	-	-	-	-	22	3	-	-	-	-	11	0	-	-	-	-	13	0
Total	836	1122	696	792	696	854	314	222	284	305	197	240	726	354	1254	922	367	507

*Three Fortune Channel sites were sampled in 2018 – FC2, FC3 and FC4. FC5 was not sampled in 2018.

A comparison of calculated sea lice prevalence, abundance and intensity by sampling area as determined for chum salmon collected in Clayoquot Sound between 2016 and 2021.

Site	Sea Lice Prevalence (%)						Sea Lice Abundance						Sea Lice Intensity					
	2016	2017	2018	2019	2020	2021	2016	2017	2018	2019	2020	2021	2016	2017	2018	2019	2020	2021
SI (3)	45.9	23.6	39.5	48.5	34.5	14.6	1.09	0.36	1.55	1.54	0.82	0.18	2.4	1.54	3.9	3.2	2.4	1.2
MC (2)	20.5	22.2	45.5	15.2	49.1	35.0	0.27	0.41	1.55	0.22	1.04	0.56	1.3	1.83	3.4	1.4	2.1	1.6
HI (2)	7.0	35.1	63.9	7.0	4.9	5.4	0.09	0.66	5.17	0.08	0.10	0.05	1.3	1.89	8.1	1.1	2.0	1.0
BS (6)	44.4	16.8	32.9	50.3	26.6	30.7	1.13	0.23	0.91	1.75	0.45	0.70	2.5	1.38	2.8	3.5	1.7	2.3
FC (4)	28.6	7.7	40.0*	35.6	20.6	36.3	0.45	0.08	0.67*	0.61	0.25	0.83	1.6	1.07	1.7*	1.7	1.2	2.3
SD (1)	-	-	-	-	50.0	0.0	-	-	-	-	0.59	0.00	-	-	-	-	1.2	0.0
Total	37.6	19.8	40.8	38.5	28.3	28.1	0.87	0.32	1.80	1.16	0.53	0.59	2.3	1.6	4.4	3.0	1.9	2.1

*Three Fortune Channel sites were sampled in 2018 – FC2, FC3 and FC4. FC5 was not sampled in 2018.

The number of sea lice in each life stage by species identified on chum salmon from Clayoquot Sound between 2016 and 2021.
LEP = *Lepeophtheirus salmonis* CAL = *Caligus clemensi*

Life Stage ¹	Number of lice					
	2016	2017	2018	2019	2020	2021
LEP Co	104	178	330	128	78	148
LEP C1	232	98	607	218	115	151
LEP C2	178	57	216	196	47	136
LEP NM Not ID	26	-	-	-	-	-
LEP PAM	50	1	22	19	16	23
LEP PAF	46	0	27	20	18	16
LEP AM	36	6	12	11	2	2
LEP AF	4	0	10	1	2	1
TOTAL LEP	676	340	1224	593	278	477
CAL Co	7	5	4	35	6	3
CAL C1	18	6	17	120	42	4
CAL C2	15	2	4	87	10	1
CAL C3	5	0	3	44	2	8
CAL C4	2	1	2	35	23	2
CAL NM Not ID	1					
CAL PAM	0	0	0	4	4	5
CAL PAF	1	0	0	3	1	5
CAL AM	0	0	0	0	1	1
CAL AF	0	0	0	1	0	1
CAL Mot Not ID	1					
TOTAL CAL	50	14	30	329	89	30

¹ Lice life stage codes: Co = copepodid, C1-4 = chalimus 1-4, NM Not ID = Non-motile lice not identified to a life stage, PAM = pre-adult male, PAF = pre-adult female, AM = adult male, AF = adult female, Mot Not ID = Motile lice not identified to a life stage or sex.